

PDP2 Antibody

CAB17190

Description

This PDP2 Antibody is supplied as a kit for advanced applications. The kit includes Bradford Reagent to quantify total protein concentration for accurate sample normalization (Optional).

Product Information

| | |
|----------------------|---|
| SKU: | CAB17190 |
| Contents: | 20 μ L, 100 μ L Bradford Reagent: 1 vial (2ml) |
| Category: | Polyclonal Antibody |
| Synonyms: | PPM2B, PDPC 2, PPM2C2, PDP2 |
| Clone: | - |
| Applications: | WB IF/ICC ELISA |
| Conjugation: | - |
| Reactivity: | Mouse, Rat |

Antibody Data

| | |
|-----------------------|-----------------------|
| Gene ID: | 57546 |
| Uniprot: | AB_2770841 |
| Host Species: | Rabbit |
| Purification: | Affinity purification |
| Observed MW: | 50kDa |
| Calculated MW: | 60kDa |

Preparation & Storage

Storage: Store at -20°C. Avoid freeze / thaw cycles. Buffer: PBS with 0.01% thimerosal, 50% glycerol, pH 7.3.

Store Bradford Reagent at Room Temperature for 1 Year.

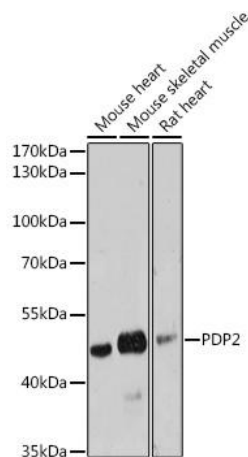
Positive Sample: Mouse heart, Mouse skeletal muscle, Rat heart

Recommended Dilutions:

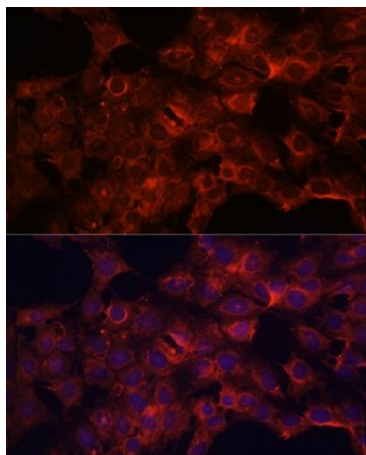
| | |
|---------------|---|
| WB | 1:500 - 1:2000 |
| IF/ICC | 1:50 - 1:200 |
| ELISA | Recommended starting concentration is 1 µg/mL. Please optimize the concentration based on your specific assay requirements. |

Protein Quantification (Optional): To quantify total protein levels, use the Bradford Reagent included in this kit. Visit <https://www.assaygenie.com/bradford-protein-assay-protocol/> to view the full protocol

Validation Data



Western blot analysis of various lysates using Rabbit pAb (CAB17190) at 1:3000 dilution. Secondary antibody: HRP-conjugated Goat anti-Rabbit IgG (H+L) (CABS014) at 1:10000 dilution. Lysates/proteins: 25µg per lane. Blocking buffer: 3% nonfat dry milk in TBST. Detection: ECL Enhanced Kit (AbGn00021). Exposure time: 90s.



Immunofluorescence analysis of cells using Rabbit pAb (CAB17190) at dilution of 1:100. Secondary antibody: Cy3-conjugated Goat anti-Rabbit IgG (H+L) (CABS007) at 1:500 dilution. Blue: DAPI for nuclear staining.

