

SLC4A1 Antibody

CAB17391

Description

This SLC4A1 Antibody is supplied as a kit for advanced applications. The kit includes Bradford Reagent to quantify total protein concentration for accurate sample normalization (Optional).

Product Information

SKU:	CAB17391
Contents:	20 µL, 100 µL Bradford Reagent: 1 vial (2ml)
Category:	Polyclonal Antibody
Synonyms:	DI, FR, SW, WD, WR, AE1, CHC, SAO, WD1, BND3, EPB3, SPH4, CD233, EMPB3, RTA1A, SLC4A1
Clone:	-
Applications:	WB ELISA IF-P
Conjugation:	-
Reactivity:	Human, Mouse, Rat

Antibody Data

Gene ID:	6521
Uniprot:	AB_2772279
Host Species:	Rabbit
Purification:	Affinity purification
Observed MW:	102kDa
Calculated MW:	102kDa

Preparation & Storage

Storage: Store at -20°C. Avoid freeze / thaw cycles. Buffer: PBS with 0.09% Sodium azide, 50% glycerol, pH 7.3.

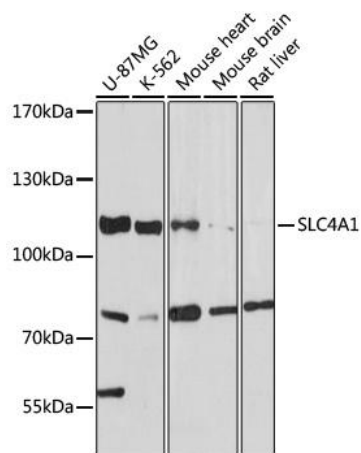
Store Bradford Reagent at Room Temperature for 1 Year.

Positive Sample: U-87MG, K-562, mouse heart, mouse brain, rat liver

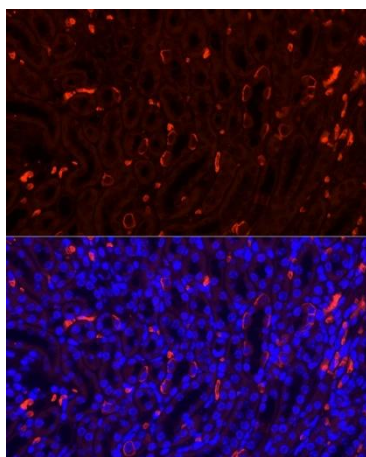
Recommended Dilutions:	WB	1:500 - 1:2000
	IF-P	1:50 - 1:200
	ELISA	Recommended starting concentration is 1 µg/mL. Please optimize the concentration based on your specific assay requirements.

Protein Quantification (Optional): To quantify total protein levels, use the Bradford Reagent included in this kit. Visit <https://www.assaygenie.com/bradford-protein-assay-protocol/> to view the full protocol

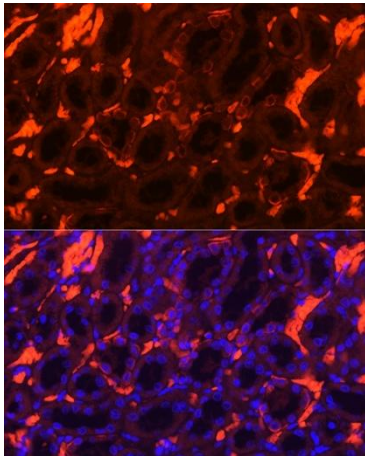
Validation Data



Western blot analysis of various lysates using SLC4A1 Rabbit pAb (CAB17391) at 1:1000 dilution. Secondary antibody: HRP-conjugated Goat anti-Rabbit IgG (H+L) (CABS014) at 1:10000 dilution. Lysates/proteins: 25 µg per lane. Blocking buffer: 3% nonfat dry milk in TBST. Detection: ECL Basic Kit (AbGn00020). Exposure time: 30s.



Immunofluorescence analysis of paraffin-embedded Mouse kidney using SLC4A1 Rabbit pAb (CAB17391) at dilution of 1:100. Secondary antibody: Cy3-conjugated Goat anti-Rabbit IgG (H+L) (CABS007) at 1:500 dilution. Blue: DAPI for nuclear staining.



Immunofluorescence analysis of paraffin-embedded Rat kidney using SLC4A1 Rabbit pAb (CAB17391) at dilution of 1:100. Secondary antibody: Cy3-conjugated Goat anti-Rabbit IgG (H+L) (CABS007) at 1:500 dilution. Blue: DAPI for nuclear staining.