

## PNLIPRP1 Antibody

CAB17520

### Description

---

This PNLIPRP1 Antibody is supplied as a kit for advanced applications. The kit includes Bradford Reagent to quantify total protein concentration for accurate sample normalization (Optional).

### Product Information

---

<b>SKU:</b>	CAB17520
<b>Contents:</b>	20 µL, 100 µL Bradford Reagent: 1 vial (2ml)
<b>Category:</b>	Polyclonal Antibody
<b>Synonyms:</b>	PLRP1, PNLIPRP1
<b>Clone:</b>	-
<b>Applications:</b>	<span>WB</span> <span>IHC-P</span> <span>ELISA</span> <span>IF-P</span>
<b>Conjugation:</b>	Unconjugated
<b>Reactivity:</b>	Human, Mouse, Rat

### Antibody Data

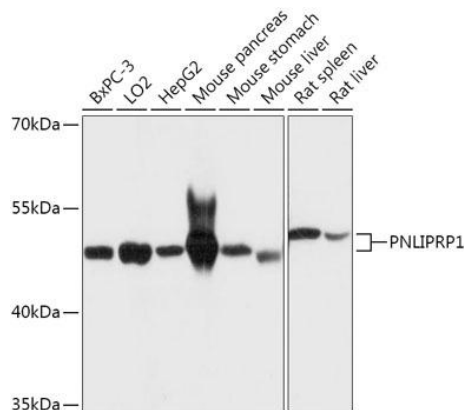
---

<b>Gene ID:</b>	5407
<b>Uniprot:</b>	AB_2771726
<b>Host Species:</b>	Rabbit
<b>Purification:</b>	Affinity purification
<b>Observed MW:</b>	52kDa
<b>Calculated MW:</b>	52kDa

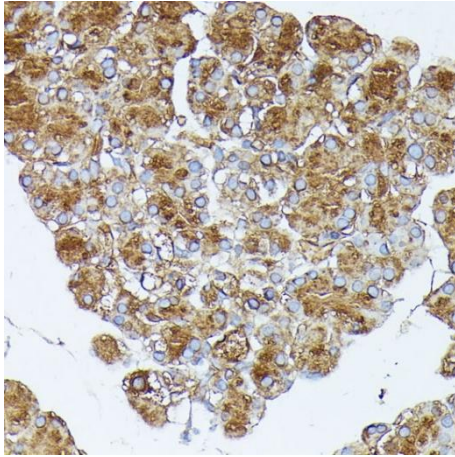
## Preparation & Storage

<b>Storage:</b>	Store at -20°C. Avoid freeze / thaw cycles. Buffer: PBS with 0.01% thimerosal, 50% glycerol, pH 7.3. Store Bradford Reagent at Room Temperature for 1 Year.	
<b>Positive Sample:</b>	BxPC-3, LO2, HepG2, Mouse pancreas, Mouse stomach, Mouse liver, Rat spleen, Rat liver	
<b>Recommended Dilutions:</b>	<b>WB</b>	1:500 - 1:2000
	<b>IF-P</b>	1:50 - 1:200
	<b>IHC-P</b>	1:100 - 1:200
	<b>ELISA</b>	Recommended starting concentration is 1 µg/mL. Please optimize the concentration based on your specific assay requirements.
<b>Protein Quantification (Optional):</b>	To quantify total protein levels, use the Bradford Reagent included in this kit. Visit <a href="https://www.assaygenie.com/bradford-protein-assay-protocol/">https://www.assaygenie.com/bradford-protein-assay-protocol/</a> to view the full protocol	

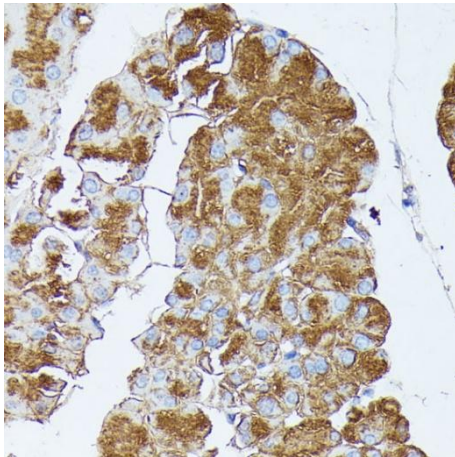
## Validation Data



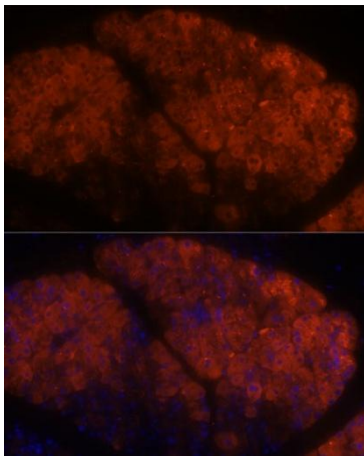
Western blot analysis of various lysates using PNLIPRP1 Rabbit pAb (CAB17520) at 1:1000 dilution. Secondary antibody: HRP-conjugated Goat anti-Rabbit IgG (H+L) (CABS014) at 1:10000 dilution. Lysates/proteins: 25µg per lane. Blocking buffer: 3% nonfat dry milk in TBST. Detection: ECL Basic Kit (AbGn00020). Exposure time: 5s.



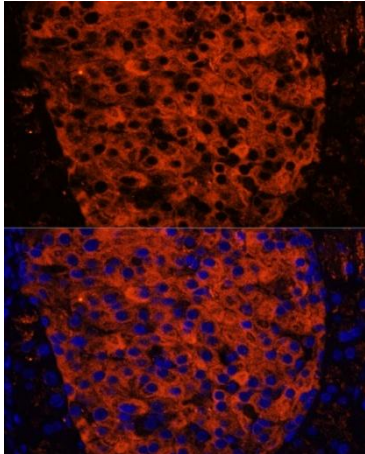
Immunohistochemistry analysis of paraffin-embedded Rat pancreas using PNLIPRP1 Rabbit pAb (CAB17520) at dilution of 1:100 (40x lens). Microwave antigen retrieval performed with 0.01M PBS Buffer (pH 7.2) prior to IHC staining.



Immunohistochemistry analysis of paraffin-embedded Mouse pancreas using PNLIPRP1 Rabbit pAb (CAB17520) at dilution of 1:100 (40x lens). Microwave antigen retrieval performed with 0.01M PBS Buffer (pH 7.2) prior to IHC staining.



Immunofluorescence analysis of paraffin-embedded rat pancreas using PNLIPRP1 Rabbit pAb (CAB17520) at dilution of 1:100. Secondary antibody: Cy3-conjugated Goat anti-Rabbit IgG (H+L) (CABS007) at 1:500 dilution. Blue: DAPI for nuclear staining.



Immunofluorescence analysis of paraffin-embedded mouse pancreas using PNLIPRP1 Rabbit pAb (CAB17520) at dilution of 1:100. Secondary antibody: Cy3-conjugated Goat anti-Rabbit IgG (H+L) (CABS007) at 1:500 dilution. Blue: DAPI for nuclear staining.