

CD3E Antibody

CAB1753

Description

This CD3E Antibody is supplied as a kit for advanced applications. The kit includes Bradford Reagent to quantify total protein concentration for accurate sample normalization (Optional).

Product Information

SKU:	CAB1753
Contents:	20 µL, 100 µL Bradford Reagent: 1 vial (2ml)
Category:	Polyclonal Antibody
Synonyms:	T3E, TCRE, IMD18, CD3epsilon, CD3E
Clone:	-
Applications:	WB IHC-P IF/ICC IP FC ELISA IF-P
Conjugation:	Unconjugated
Reactivity:	Human, Mouse, Rat

Antibody Data

Gene ID:	916
Uniprot:	AB_2763797
Host Species:	Rabbit
Purification:	Affinity purification
Observed MW:	23kDa
Calculated MW:	23kDa

Preparation & Storage

Storage: Store at -20°C. Avoid freeze / thaw cycles. Buffer: PBS containing 50% glycerol, preserved with proclin300 or sodium azide (as specified on the Certificate of Analysis), pH 7.3.

Store Bradford Reagent at Room Temperature for 1 Year.

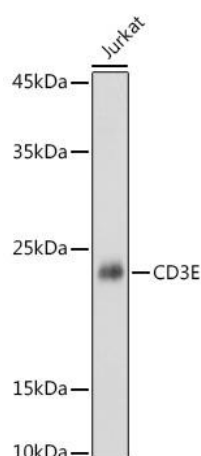
Positive Sample: Jurkat

Recommended Dilutions:

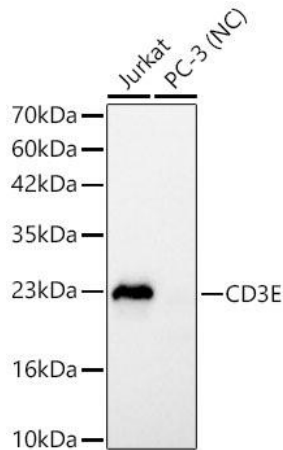
WB	1:500 - 1:1000
IP	0.5µg-4µg antibody for 200µg-400µg extracts of whole cells
IF/ICC	1:50 - 1:200
IF-P	1:50 - 1:200
IHC-P	1:50 - 1:200
FC	1:100 - 1:500
ELISA	Recommended starting concentration is 1 µg/mL. Please optimize the concentration based on your specific assay requirements.

Protein Quantification (Optional): To quantify total protein levels, use the Bradford Reagent included in this kit. Visit <https://www.assaygenie.com/bradford-protein-assay-protocol/> to view the full protocol

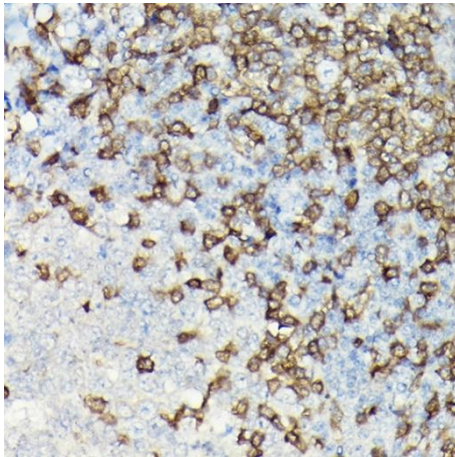
Validation Data



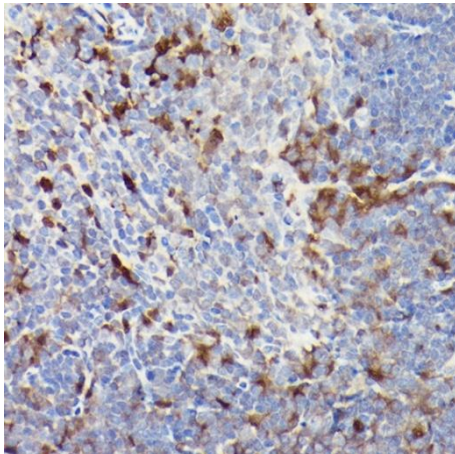
Western blot analysis of lysates from Jurkat cells, using CD3E Rabbit pAb (CAB1753) at 1:1000 dilution. Secondary antibody: HRP-conjugated Goat anti-Rabbit IgG (H+L) (CABS014) at 1:10000 dilution. Lysates/proteins: 25µg per lane. Blocking buffer: 3% nonfat dry milk in TBST. Detection: ECL Basic Kit (AbGn00020). Exposure time: 1s.



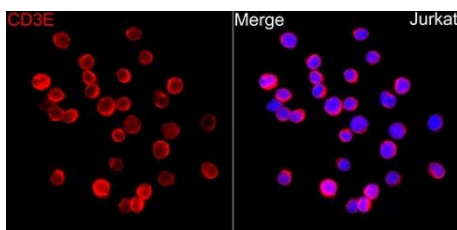
Western blot analysis of various lysates using Human CD3E Rabbit pAb (CAB1753) at 1:900 dilution. Secondary antibody: HRP-conjugated Goat anti-Rabbit IgG (H+L) (CABS014) at 1:10000 dilution. Lysates/proteins: 25 µg per lane. Blocking buffer: 3% nonfat dry milk in TBST. Detection: ECL Basic Kit (AbGn00020). Negative control (NC): PC-3. Exposure time: 1s.



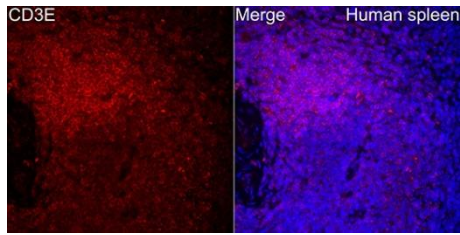
Immunohistochemistry analysis of paraffin-embedded Human tonsil using CD3E Rabbit pAb (CAB1753) at dilution of 1:200 (40x lens). High pressure antigen retrieval performed with 0.01M Citrate buffer (pH 6.0) prior to IHC staining.



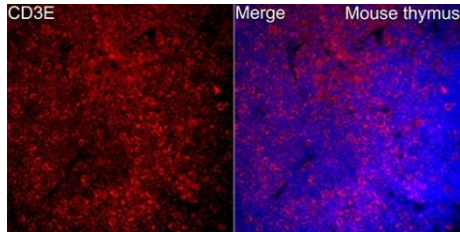
Immunohistochemistry analysis of paraffin-embedded Mouse spleen using CD3E Rabbit pAb (CAB1753) at dilution of 1:200 (40x lens). High pressure antigen retrieval performed with 0.01M Citrate buffer (pH 6.0) prior to IHC staining.



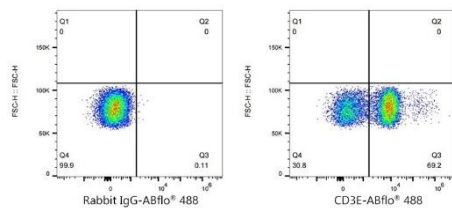
Immunofluorescence analysis of Jurkat cells using Human CD3E Rabbit pAb (CAB1753) at dilution of 1:100 (40x lens). Secondary antibody: Cy3-conjugated Goat anti-Rabbit IgG (H+L) (CABS007) at 1:500 dilution. Blue: DAPI for nuclear staining.



Immunofluorescence analysis of paraffin-embedded Human spleen tissue using CD3E Rabbit pAb (CAB1753) at a dilution of 1:100 (40x lens). Secondary antibody: Cy3 Goat Anti-Rabbit IgG (H+L) (CABS007) at 1:500 dilution. Blue: DAPI for nuclear staining. Perform high pressure antigen retrieval with 0.01 M citrate buffer (pH 6.0) prior to IF staining.



Immunofluorescence analysis of paraffin-embedded Mouse thymus tissue using CD3E Rabbit pAb (CAB1753) at a dilution of 1:100 (40x lens). Secondary antibody: Cy3 Goat Anti-Rabbit IgG (H+L) (CABS007) at 1:500 dilution. Blue: DAPI for nuclear staining. Perform high pressure antigen retrieval with 0.01 M citrate buffer (pH 6.0) prior to IF staining.



Flow cytometry: 1×10^6 Human PBMC were surface-stained with Rabbit IgG isotype control (CABC042, 2 µg/mL, left) or CD3E Rabbit pAb (CAB1753, 2 µg/mL, right), followed by FITC conjugated goat anti-Rabbit pAb staining.