

RHBDF1 Antibody

CAB17754

Description

This RHBDF1 Antibody is supplied as a kit for advanced applications. The kit includes Bradford Reagent to quantify total protein concentration for accurate sample normalization (Optional).

Product Information

SKU:	CAB17754
Contents:	20 µL, 100 µL Bradford Reagent: 1 vial (2ml)
Category:	Polyclonal Antibody
Synonyms:	Dist1, hDist1, C16orf8, EGFR-RS, gene-89, gene-90, RHBDF1
Clone:	-
Applications:	WB IF/ICC ELISA
Conjugation:	Unconjugated
Reactivity:	Mouse, Rat

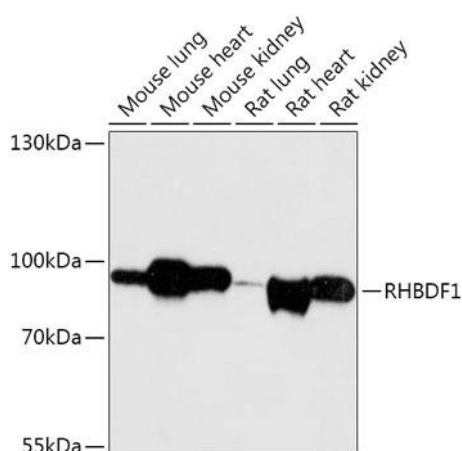
Antibody Data

Gene ID:	64285
Uniprot:	AB_2772005
Host Species:	Rabbit
Purification:	Affinity purification
Observed MW:	97kDa
Calculated MW:	97kDa

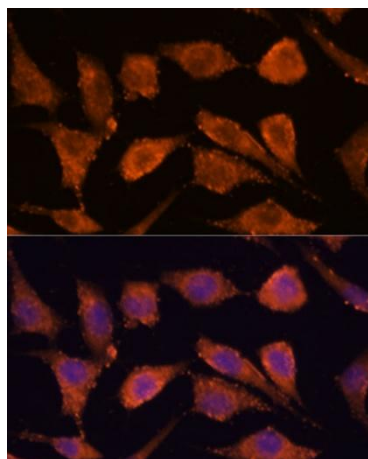
Preparation & Storage

Storage:	Store at -20°C. Avoid freeze / thaw cycles. Buffer: PBS with 0.01% thimerosal, 50% glycerol, pH 7.3. Store Bradford Reagent at Room Temperature for 1 Year.	
Positive Sample:	Mouse lung, Mouse heart, Mouse kidney, Rat lung, Rat heart, Rat kidney	
Recommended Dilutions:	WB	1:500 - 1:2000
	IF/ICC	1:50 - 1:200
	ELISA	Recommended starting concentration is 1 µg/mL. Please optimize the concentration based on your specific assay requirements.
Protein Quantification (Optional):	To quantify total protein levels, use the Bradford Reagent included in this kit. Visit https://www.assaygenie.com/bradford-protein-assay-protocol/ to view the full protocol	

Validation Data



Western blot analysis of various lysates using RHBDF1 Rabbit pAb (CAB17754) at 1:1000 dilution. Secondary antibody: HRP-conjugated Goat anti-Rabbit IgG (H+L) (CABS014) at 1:10000 dilution. Lysates/proteins: 25 µg per lane. Blocking buffer: 3% nonfat dry milk in TBST. Detection: ECL Basic Kit (AbGn00020). Exposure time: 30s.



Immunofluorescence analysis of cells using RHBDF1 Rabbit pAb (CAB17754) at dilution of 1:100. Secondary antibody: Cy3-conjugated Goat anti-Rabbit IgG (H+L) (CABS007) at 1:500 dilution. Blue: DAPI for nuclear staining.

