

Enpp1 Polyclonal Antibody

CAB17876

Description

This Enpp1 Polyclonal Antibody is supplied as a kit for advanced applications. The kit includes Bradford Reagent to quantify total protein concentration for accurate sample normalization (Optional).

Product Information

SKU:	CAB17876
Contents:	20 µL, 100 µL Bradford Reagent: 1 vial (2ml)
Category:	Polyclonal Antibody
Synonyms:	Pca, ttw, twy, M6S1, NPP1, Npps, PC-1, Ly-41, Pca-1, PdnP1, CD203c, E-NPP1, E-NPP 1, 4833416E15Rik, Enpp1
Clone:	-
Applications:	WB IF/ICC ELISA
Conjugation:	Unconjugated
Reactivity:	Human, Mouse, Rat

Antibody Data

Gene ID:	18605
Uniprot:	AB_2769327
Host Species:	Rabbit
Purification:	Affinity purification
Observed MW:	120kDa/170kDa
Calculated MW:	103kDa

Preparation & Storage

Storage: Store at -20°C. Avoid freeze / thaw cycles. Buffer: PBS with 0.01% thimerosal, 50% glycerol, pH 7.3.

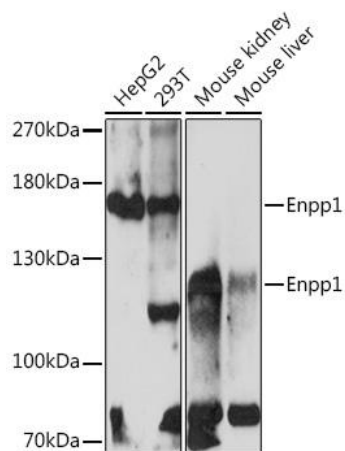
Store Bradford Reagent at Room Temperature for 1 Year.

Positive Sample: HepG2, 293T, Mouse kidney, Mouse liver

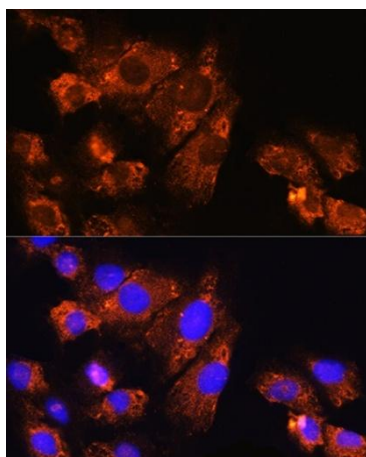
Recommended Dilutions:	WB	1:500 - 1:1000
	IF/ICC	1:50 - 1:200
	ELISA	Recommended starting concentration is 1 µg/mL. Please optimize the concentration based on your specific assay requirements.

Protein Quantification (Optional): To quantify total protein levels, use the Bradford Reagent included in this kit. Visit <https://www.assaygenie.com/bradford-protein-assay-protocol/> to view the full protocol

Validation Data



Western blot analysis of various lysates using Enpp1 Rabbit pAb (CAB17876) at 1:1000 dilution. Secondary antibody: HRP-conjugated Goat anti-Rabbit IgG (H+L) (CABS014) at 1:10000 dilution. Lysates/proteins: 25µg per lane. Blocking buffer: 3% nonfat dry milk in TBST. Detection: ECL Basic Kit (AbGn00020). Exposure time: 30s.



Immunofluorescence analysis of cells using Enpp1 Rabbit pAb (CAB17876) at dilution of 1:100. Secondary antibody: Cy3-conjugated Goat anti-Rabbit IgG (H+L) (CABS007) at 1:500 dilution. Blue: DAPI for nuclear staining.

