

## [KO Validated] APP Monoclonal Antibody

CAB17911

### Description

---

This [KO Validated] APP Monoclonal Antibody is supplied as a kit for advanced applications. The kit includes Bradford Reagent to quantify total protein concentration for accurate sample normalization (Optional).

### Product Information

---

<b>SKU:</b>	CAB17911
<b>Contents:</b>	20 µL, 100 µL Bradford Reagent: 1 vial (2ml)
<b>Category:</b>	Monoclonal Antibody
<b>Synonyms:</b>	AAA, AD1, PN2, ABPP, APPI, CVAP, ABETA, PN-II, preA4, CTFgamma, alpha-sAPP, PP
<b>Clone:</b>	ARC0465
<b>Applications:</b>	WB IHC-P IF/ICC IP ELISA IF-P
<b>Conjugation:</b>	Unconjugated
<b>Reactivity:</b>	Human, Mouse, Rat

### Antibody Data

---

<b>Gene ID:</b>	351
<b>Uniprot:</b>	AB_2861756
<b>Host Species:</b>	Rabbit
<b>Purification:</b>	Affinity purification
<b>Observed MW:</b>	100-140kDa
<b>Calculated MW:</b>	87kDa

## Preparation & Storage

**Storage:** Store at -20°C. Avoid freeze / thaw cycles. Buffer: PBS containing 50% glycerol and 0.05% BSA, preserved with proclin300 or sodium azide (as specified on the Certificate of Analysis), pH 7.3.

Store Bradford Reagent at Room Temperature for 1 Year.

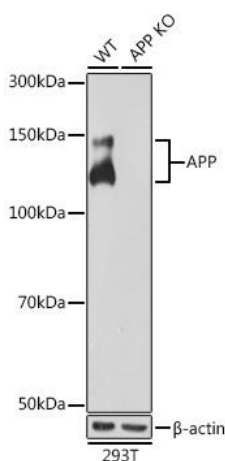
**Positive Sample:** 293T, HeLa, U-87 MG, Mouse brain, Rat brain

**Recommended Dilutions:**

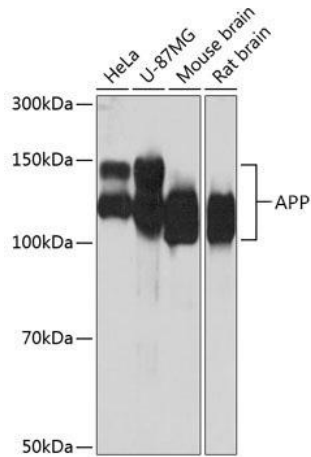
<b>WB</b>	1:1000 - 1:6000
<b>IP</b>	0.5µg-4µg antibody for 200µg-400µg extracts of whole cells
<b>IF/ICC</b>	1:100 - 1:800
<b>IF-P</b>	1:100 - 1:800
<b>IHC-P</b>	1:2000 - 1:8000
<b>ELISA</b>	Recommended starting concentration is 1 µg/mL. Please optimize the concentration based on your specific assay requirements.

**Protein Quantification (Optional):** To quantify total protein levels, use the Bradford Reagent included in this kit. Visit <https://www.assaygenie.com/bradford-protein-assay-protocol/> to view the full protocol

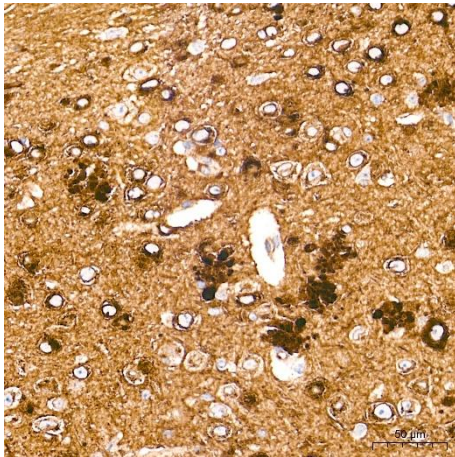
## Validation Data



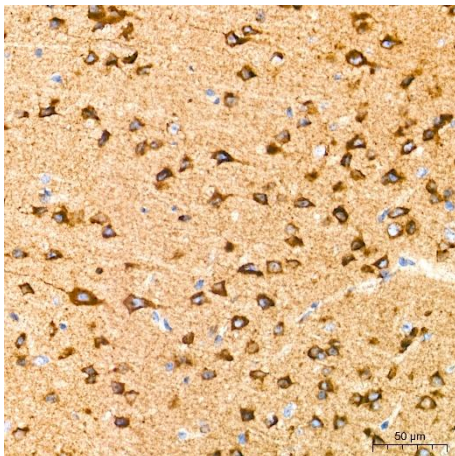
Western blot analysis of lysates from wild type (WT) and APP knockout (KO) 293T cells, using [KO Validated] APP Rabbit mAb (CAB17911) at 1:1000 dilution. Secondary antibody: HRP-conjugated Goat anti-Rabbit IgG (H+L) (CABS014) at 1:10000 dilution. Lysates/proteins: 25µg per lane. Blocking buffer: 3% nonfat dry milk in TBST. Detection: ECL Basic Kit (AbGn00020). Exposure time: 10s.



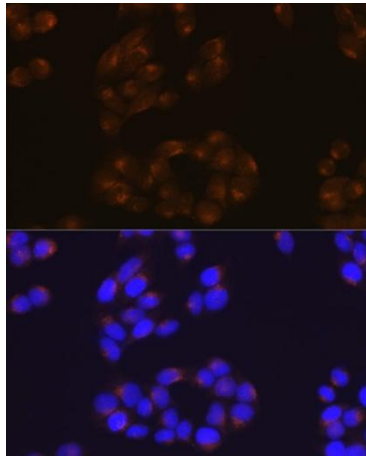
Western blot analysis of various lysates using [KO Validated] APP Rabbit mAb (CAB17911) at 1:1000 dilution. Secondary antibody: HRP-conjugated Goat anti-Rabbit IgG (H+L) (CABS014) at 1:10000 dilution. Lysates/proteins: 25µg per lane. Blocking buffer: 3% nonfat dry milk in TBST. Detection: ECL Basic Kit (AbGn00020). Exposure time: 10s.



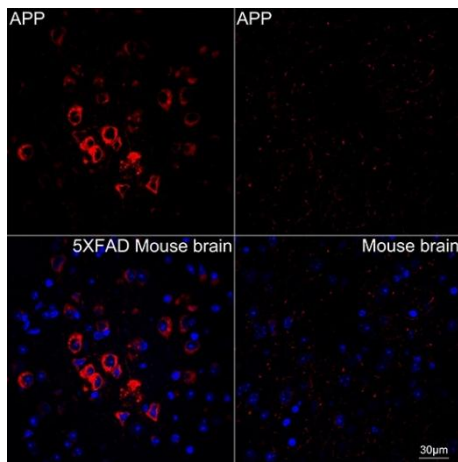
Immunohistochemistry analysis of paraffin-embedded (5XFAD) Mouse brain tissue using [KO Validated] APP Rabbit mAb (CAB17911) at a dilution of 1:2000 (40x lens). High pressure antigen retrieval performed with 0.01M Tris-EDTA Buffer (pH 9.0) prior to IHC staining.



Immunohistochemistry analysis of paraffin-embedded Mouse brain tissue using [KO Validated] APP Rabbit mAb (CAB17911) at a dilution of 1:2000 (40x lens). High pressure antigen retrieval performed with 0.01M Tris-EDTA Buffer (pH 9.0) prior to IHC staining.



Immunofluorescence analysis of HeLa cells using APP Rabbit mAb (CAB17911) at dilution of 1:100 (40x lens). Secondary antibody: Cy3-conjugated Goat anti-Rabbit IgG (H+L) (CABS007) at 1:500 dilution. Blue: DAPI for nuclear staining.



Confocal imaging of paraffin-embedded 5XFAD Mouse brain and Mouse brain using [KO Validated] APP Rabbit mAb (CAB17911, dilution 1:200) followed by a further incubation with Cy3 Goat Anti-Rabbit IgG (H+L) (CABS007, dilution 1:500) (Red). DAPI was used for nuclear staining (Blue). Objective: 40x.