

## [KO Validated] UBE2S Antibody

CAB18064

### Description

---

This [KO Validated] UBE2S Antibody is supplied as a kit for advanced applications. The kit includes Bradford Reagent to quantify total protein concentration for accurate sample normalization (Optional).

### Product Information

---

SKU:	CAB18064
Contents:	20 $\mu$ L, 100 $\mu$ L Bradford Reagent: 1 vial (2ml)
Category:	Polyclonal Antibody
Synonyms:	EPF5, E2EPF, E2-EPF, 2S
Clone:	-
Applications:	<span>WB</span> <span>ELISA</span>
Conjugation:	Unconjugated
Reactivity:	Human, Mouse, Rat

### Antibody Data

---

Gene ID:	27338
Uniprot:	AB_2861859
Host Species:	Rabbit
Purification:	Affinity purification
Observed MW:	26kDa
Calculated MW:	24kDa

## Preparation & Storage

**Storage:** Store at -20°C. Avoid freeze / thaw cycles. Buffer: PBS with 0.09% Sodium azide, 50% glycerol, pH 7.3.

Store Bradford Reagent at Room Temperature for 1 Year.

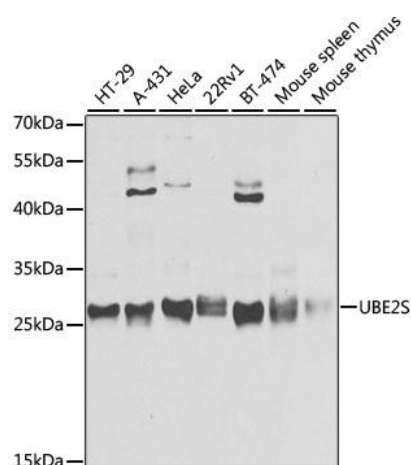
**Positive Sample:** 293T

**Recommended Dilutions:**

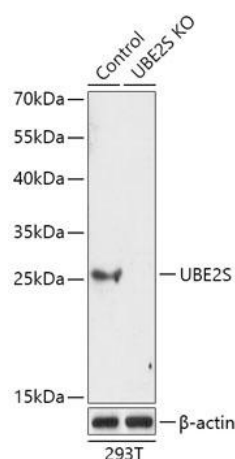
<b>WB</b>	1:200 - 1:2000
<b>ELISA</b>	Recommended starting concentration is 1 µg/mL. Please optimize the concentration based on your specific assay requirements.

**Protein Quantification (Optional):** To quantify total protein levels, use the Bradford Reagent included in this kit. Visit <https://www.assaygenie.com/bradford-protein-assay-protocol/> to view the full protocol

## Validation Data



Western blot analysis of various lysates using UBE2S Rabbit pAb (CAB18064) at 1:3000 dilution. Secondary antibody: HRP-conjugated Goat anti-Rabbit IgG (H+L) (CABS014) at 1:10000 dilution. Lysates/proteins: 25µg per lane. Blocking buffer: 3% nonfat dry milk in TBST. Detection: ECL Basic Kit (AbGn00020). Exposure time: 10s.



Western blot analysis of lysates from wild type (WT) and UBE2S knockout (KO) 293T cells, using [KO Validated] UBE2S Rabbit pAb (CAB18064) at 1:1000 dilution. Secondary antibody: HRP-conjugated Goat anti-Rabbit IgG (H+L) (CABS014) at 1:10000 dilution. Lysates/proteins: 25µg per lane. Blocking buffer: 3% nonfat dry milk in TBST. Detection: ECL Basic Kit (AbGn00020). Exposure time: 5s.