

## pan-Mono-MethylR (R\*GG) Motif Antibody

CAB18297

### Description

---

This pan-Mono-MethylR (R\*GG) Motif Antibody is supplied as a kit for advanced applications. The kit includes Bradford Reagent to quantify total protein concentration for accurate sample normalization (Optional).

### Product Information

---

<b>SKU:</b>	CAB18297
<b>Contents:</b>	20 µL, 100 µL Bradford Reagent: 1 vial (2ml)
<b>Category:</b>	Polyclonal Antibody
<b>Synonyms:</b>	-
<b>Clone:</b>	-
<b>Applications:</b>	WB ELISA DB
<b>Conjugation:</b>	-
<b>Reactivity:</b>	Human, Mouse, Rat

### Antibody Data

---

<b>Gene ID:</b>	-
<b>Uniprot:</b>	AB_2862070
<b>Host Species:</b>	Rabbit
<b>Purification:</b>	Affinity purification
<b>Observed MW:</b>	16-120kDa
<b>Calculated MW:</b>	-

## Preparation & Storage

**Storage:** Store at -20°C. Avoid freeze / thaw cycles. Buffer: PBS with 0.01% thimerosal, 50% glycerol, pH 7.3.

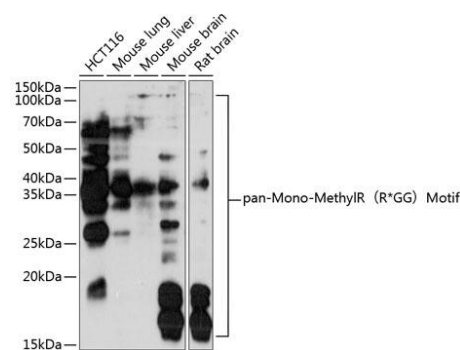
Store Bradford Reagent at Room Temperature for 1 Year.

**Positive Sample:** HCT116, Mouse lung, Mouse liver, Mouse brain, Rat brain

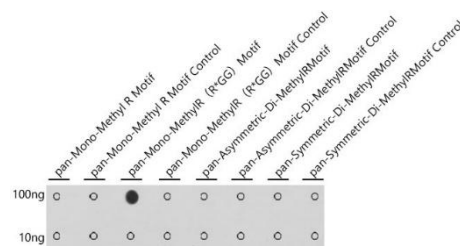
<b>Recommended Dilutions:</b>	<b>WB</b>	1:500 - 1:1000
	<b>DB</b>	1:500 - 1:1000
	<b>ELISA</b>	Recommended starting concentration is 1 µg/mL. Please optimize the concentration based on your specific assay requirements.

**Protein Quantification (Optional):** To quantify total protein levels, use the Bradford Reagent included in this kit. Visit <https://www.assaygenie.com/bradford-protein-assay-protocol/> to view the full protocol

## Validation Data



Western blot analysis of various lysates using pan-Mono-MethylR (R\*GG) Motif pAb (CAB18297) at 1:1000 dilution. Secondary antibody: HRP-conjugated Goat anti-Rabbit IgG (H+L) (CABS014) at 1:10000 dilution. Lysates/proteins: 25µg per lane. Blocking buffer: 3% nonfat dry milk in TBST. Detection: ECL Basic Kit (AbGn00020). Exposure time: 90s.



Dot-blot analysis of all sorts of peptides using pan-Mono-MethylR (R\*GG) Motif Rabbit pAb (CAB18297) at 1:1000 dilution.