

SMC3 Antibody

CAB18402

Description

This SMC3 Antibody is supplied as a kit for advanced applications. The kit includes Bradford Reagent to quantify total protein concentration for accurate sample normalization (Optional).

Product Information

SKU:	CAB18402
Contents:	20 μ L, 100 μ L Bradford Reagent: 1 vial (2ml)
Category:	Polyclonal Antibody
Synonyms:	BAM, BMH, HCAP, CDLS3, CSPG6, SMC3L1, SMC3
Clone:	-
Applications:	WB IP ELISA
Conjugation:	-
Reactivity:	Human, Mouse

Antibody Data

Gene ID:	9126
Uniprot:	AB_2862169
Host Species:	Rabbit
Purification:	Affinity purification
Observed MW:	142kDa
Calculated MW:	142kDa

Preparation & Storage

Storage: Store at -20°C. Avoid freeze / thaw cycles. Buffer: PBS with 0.01% thimerosal, 50% glycerol, pH 7.3.

Store Bradford Reagent at Room Temperature for 1 Year.

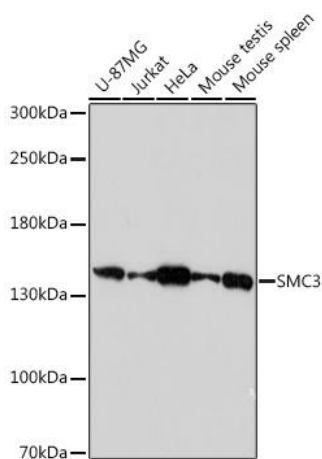
Positive Sample: U-87MG, Jurkat, HeLa, Mouse testis, Mouse spleen

Recommended Dilutions:

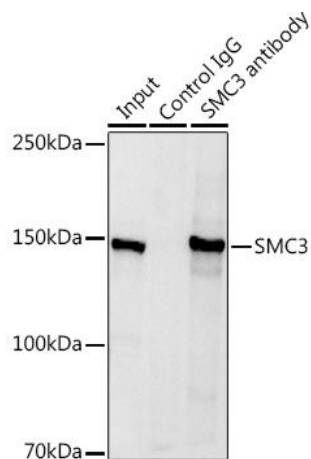
WB	1:500 - 1:2000
IP	0.5µg-4µg antibody for 400µg-600µg extracts of whole cells
ELISA	Recommended starting concentration is 1 µg/mL. Please optimize the concentration based on your specific assay requirements.

Protein Quantification (Optional): To quantify total protein levels, use the Bradford Reagent included in this kit. Visit <https://www.assaygenie.com/bradford-protein-assay-protocol/> to view the full protocol

Validation Data



Western blot analysis of various lysates using Rabbit pAb (CAB18402) at 1:1000 dilution. Secondary antibody: HRP-conjugated Goat anti-Rabbit IgG (H+L) (CABS014) at 1:10000 dilution. Lysates/proteins: 25µg per lane. Blocking buffer: 3% nonfat dry milk in TBST. Detection: ECL Basic Kit (AbGn00020). Exposure time: 90s.



Immunoprecipitation analysis of 600 µg extracts of Mouse spleen using 3 µg antibody (CAB18402). Western blot was performed from the immunoprecipitate using antibody (CAB18402) at a dilution of 1:1000.