

Pan Lactic acid-Lysine Antibody

CAB18831

Description

This Pan Lactic acid-Lysine Antibody is supplied as a kit for advanced applications. The kit includes Bradford Reagent to quantify total protein concentration for accurate sample normalization (Optional).

Product Information

SKU:	CAB18831
Contents:	20 μ L, 100 μ L Bradford Reagent: 1 vial (2ml)
Category:	Polyclonal Antibody
Synonyms:	-
Clone:	-
Applications:	WB ELISA
Conjugation:	-
Reactivity:	Human, Mouse, Rat, Other (Wide Range)

Antibody Data

Gene ID:	-
Uniprot:	AB_2862466
Host Species:	Rabbit
Purification:	Affinity purification
Observed MW:	-
Calculated MW:	-

Preparation & Storage

Storage: Store at -20°C. Avoid freeze / thaw cycles. Buffer: PBS with 0.09% sodium azide, 50% glycerol, pH 7.3.

Store Bradford Reagent at Room Temperature for 1 Year.

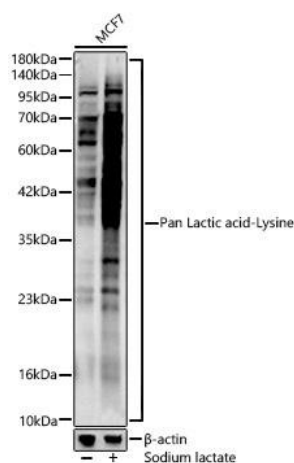
Positive Sample: MCF7 treated with Sodium lactate, NIH/3T3 treated with Sodium lactate, C6 treated with Sodium lactate

Recommended Dilutions:

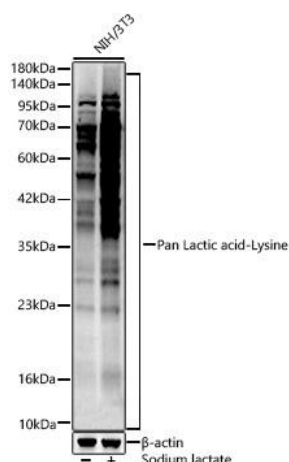
WB	1:500 - 1:1000
ELISA	Recommended starting concentration is 1 µg/mL. Please optimize the concentration based on your specific assay requirements.

Protein Quantification (Optional): To quantify total protein levels, use the Bradford Reagent included in this kit. Visit <https://www.assaygenie.com/bradford-protein-assay-protocol/> to view the full protocol

Validation Data



Western blot analysis of lysates from cells, using Pan Lactic acid-Lysine Rabbit pAb (CAB18831) at 1:400 dilution. cells were treated with Sodium lactate(100mM) for 24h. Secondary antibody: HRP-conjugated Goat anti-Rabbit IgG (H+L) (CABS014) at 1:10000 dilution. Lysates/proteins: 25µg per lane. Blocking buffer: 3% nonfat dry milk in TBST. Detection: ECL Enhanced Kit (AbGn00021). Exposure time: 60s.



Western blot analysis of lysates from NIH/3T3 cells, using Pan Lactic acid-Lysine Rabbit pAb (CAB18831) at 1:400 dilution. NIH/3T3 cells were treated with Sodium lactate(100mM) for 24h. Secondary antibody: HRP-conjugated Goat anti-Rabbit IgG (H+L) (CABS014) at 1:10000 dilution. Lysates/proteins: 25µg per lane. Blocking buffer: 3% nonfat dry milk in TBST. Detection: ECL Enhanced Kit (AbGn00021). Exposure time: 60s.