

Rad21 Antibody

CAB18850

Description

This Rad21 Antibody is supplied as a kit for advanced applications. The kit includes Bradford Reagent to quantify total protein concentration for accurate sample normalization (Optional).

Product Information

SKU:	CAB18850
Contents:	20 µL, 100 µL Bradford Reagent: 1 vial (2ml)
Category:	Polyclonal Antibody
Synonyms:	MGS, HR21, MCD1, NXP1, SCC1, CDLS4, hHR21, HRAD21, Rad21
Clone:	-
Applications:	WB IHC-P IF/ICC IP ChIP ELISA
Conjugation:	-
Reactivity:	Human, Mouse, Rat

Antibody Data

Gene ID:	5885
Uniprot:	AB_2862479
Host Species:	Rabbit
Purification:	Affinity purification
Observed MW:	130kDa
Calculated MW:	72kDa

Preparation & Storage

Storage: Store at -20°C. Avoid freeze / thaw cycles. Buffer: PBS containing 50% glycerol, preserved with proclin300 or sodium azide (as specified on the Certificate of Analysis), pH 7.3.

Store Bradford Reagent at Room Temperature for 1 Year.

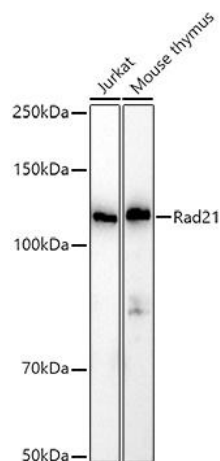
Positive Sample: Jurkat, Mouse thymus, C6

Recommended Dilutions:

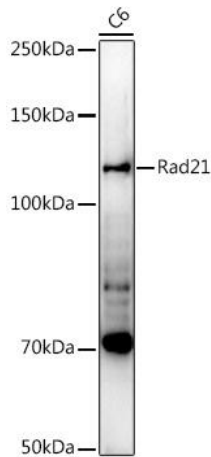
WB	1:500 - 1:1000
IHC-P	1:50 - 1:200
IF/ICC	1:50 - 1:200
IP	0.5µg-4µg antibody for 200µg-400µg extracts of whole cells
ELISA	Recommended starting concentration is 1 µg/mL. Please optimize the concentration based on your specific assay requirements. ChIP 5µg antibody for 10µg-15µg of Chromatin

Protein Quantification (Optional): To quantify total protein levels, use the Bradford Reagent included in this kit. Visit <https://www.assaygenie.com/bradford-protein-assay-protocol/> to view the full protocol

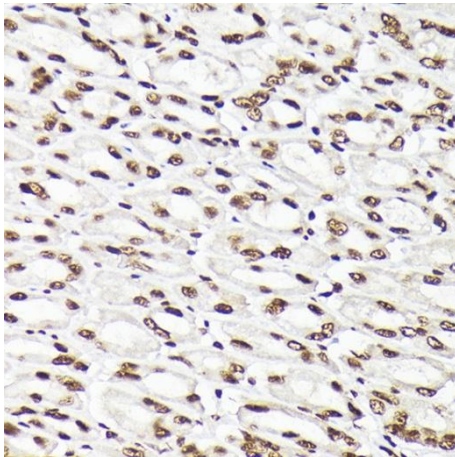
Validation Data



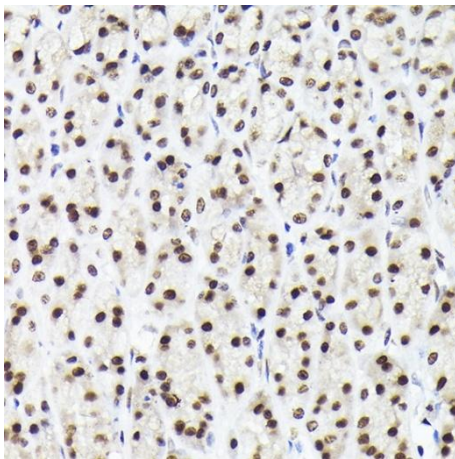
Western blot analysis of various lysates using Rad21 Rabbit pAb (CAB18850) at 1:1000 dilution. Secondary antibody: HRP-conjugated Goat anti-Rabbit IgG (H+L) (CABS014) at 1:10000 dilution. Lysates/proteins: 25µg per lane. Blocking buffer: 3% nonfat dry milk in TBST. Detection: ECL Basic Kit (AbGn00020). Exposure time: 10s.



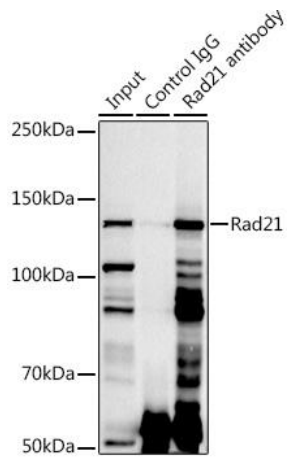
Western blot analysis of lysates from cells, using Rad21 Rabbit pAb (CAB18850) at 1:1000 dilution. Secondary antibody: HRP-conjugated Goat anti-Rabbit IgG (H+L) (CABS014) at 1:10000 dilution. Lysates/proteins: 25µg per lane. Blocking buffer: 3% nonfat dry milk in TBST. Detection: ECL Enhanced Kit (AbGn00021). Exposure time: 90s.



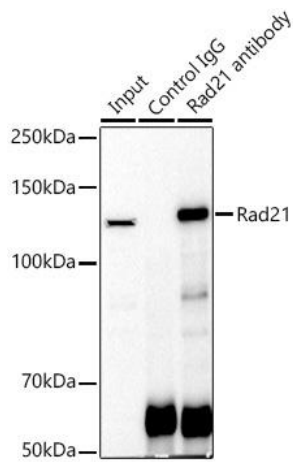
Immunohistochemistry analysis of paraffin-embedded Mouse stomach using Rad21 Rabbit pAb (CAB18850) at dilution of 1:200 (40x lens). High pressure antigen retrieval performed with 0.01M Citrate buffer (pH 6.0) prior to IHC staining.



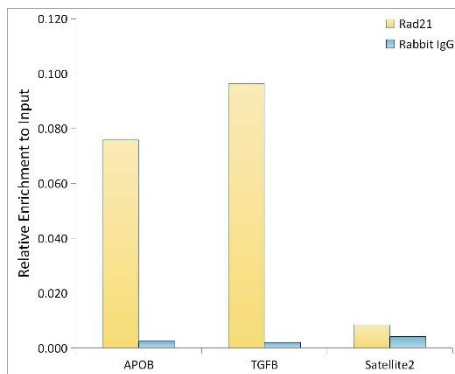
Immunohistochemistry analysis of paraffin-embedded Rat stomach using Rad21 Rabbit pAb (CAB18850) at dilution of 1:200 (40x lens). High pressure antigen retrieval performed with 0.01M Citrate buffer (pH 6.0) prior to IHC staining.



Immunoprecipitation analysis of 300 µg extracts of Jurkat cells using 3 µg Rad21 antibody (CAB18850). Western blot was performed from the immunoprecipitate using Rad21 antibody (CAB18850) at a dilution of 1:1000.



Immunoprecipitation analysis of 300 µg extracts of Jurkat cells using 3 µg Rad21 antibody (CAB18850). Western blot was performed from the immunoprecipitate using Rad21 antibody (CAB18850) at a dilution of 1:1000.



Chromatin immunoprecipitation analysis of extracts of A-549 cells, using Rad21 antibody (CAB18850) and rabbit IgG. The amount of immunoprecipitated DNA was checked by quantitative PCR. Histogram was constructed by the ratios of the immunoprecipitated DNA to the input.