

CD11a/LFA-1A/ITGAL Monoclonal Antibody

CAB19009

Description

This CD11a/LFA-1A/ITGAL Monoclonal Antibody is supplied as a kit for advanced applications. The kit includes Bradford Reagent to quantify total protein concentration for accurate sample normalization (Optional).

Product Information

SKU:	CAB19009
Contents:	20 µL, 100 µL Bradford Reagent: 1 vial (2ml)
Category:	Monoclonal Antibody
Synonyms:	CD11A, LFA-1, LFA1A, CD11a/LFA-1A/ITGAL
Clone:	ARC0344
Applications:	WB IHC-P ELISA
Conjugation:	Unconjugated
Reactivity:	Human

Antibody Data

Gene ID:	3683
Uniprot:	AB_2862501
Host Species:	Rabbit
Purification:	Affinity purification
Observed MW:	180kDa
Calculated MW:	129kDa

Preparation & Storage

Storage: Store at -20°C. Avoid freeze / thaw cycles. Buffer: PBS containing 50% glycerol and 0.05% BSA, preserved with proclin300 or sodium azide (as specified on the Certificate of Analysis), pH 7.3.

Store Bradford Reagent at Room Temperature for 1 Year.

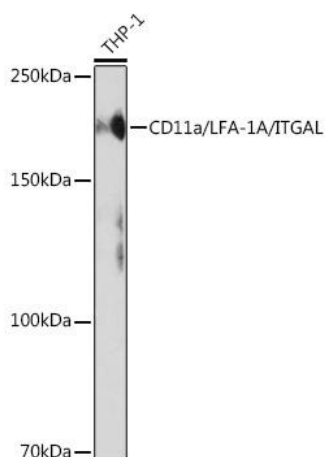
Positive Sample: THP-1

Recommended Dilutions:

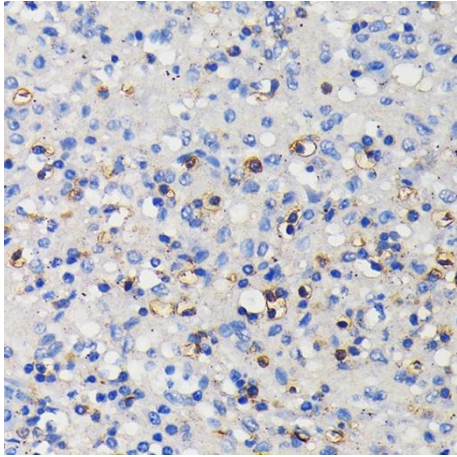
WB	1:500 - 1:2000
IHC-P	1:50 - 1:200
ELISA	Recommended starting concentration is 1 µg/mL. Please optimize the concentration based on your specific assay requirements.

Protein Quantification (Optional): To quantify total protein levels, use the Bradford Reagent included in this kit. Visit <https://www.assaygenie.com/bradford-protein-assay-protocol/> to view the full protocol

Validation Data



Western blot analysis of lysates from THP-1 cells, using CD11a/LFA-1A/ITGAL Rabbit mAb (CAB19009) at 1:1000 dilution. Secondary antibody: HRP-conjugated Goat anti-Rabbit IgG (H+L) (CABS014) at 1:10000 dilution. Lysates/proteins: 25µg per lane. Blocking buffer: 3% nonfat dry milk in TBST. Detection: ECL Enhanced Kit (AbGn00021). Exposure time: 3min.



Immunohistochemistry analysis of paraffin-embedded Human spleen using CD11a/LFA-1A/ITGAL Rabbit mAb (CAB19009) at dilution of 1:100 (40x lens). Microwave antigen retrieval performed with 0.01M PBS Buffer (pH 7.2) prior to IHC staining.