

[KO Validated] c-Myc Monoclonal Antibody

CAB19032

Description

This [KO Validated] c-Myc Monoclonal Antibody is supplied as a kit for advanced applications. The kit includes Bradford Reagent to quantify total protein concentration for accurate sample normalization (Optional).

Product Information

SKU:	CAB19032
Contents:	20 μ L, 100 μ L Bradford Reagent: 1 vial (2ml)
Category:	Monoclonal Antibody
Synonyms:	MRTL, MYCC, c-Myc, bHLHe39, yc
Clone:	ARC0412
Applications:	WB ChIP ELISA CUT&Tag
Conjugation:	Unconjugated
Reactivity:	Human

Antibody Data

Gene ID:	4609
Uniprot:	AB_2862524
Host Species:	Rabbit
Purification:	Affinity purification
Observed MW:	50-60kDa
Calculated MW:	51kDa

Preparation & Storage

Storage: Store at -20°C. Avoid freeze / thaw cycles. Buffer: PBS containing 50% glycerol and 0.05% BSA, preserved with proclin300 or sodium azide (as specified on the Certificate of Analysis), pH 7.3.

Store Bradford Reagent at Room Temperature for 1 Year.

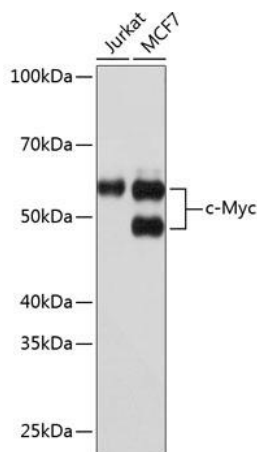
Positive Sample: Jurkat, MCF7, HCT 116

Recommended Dilutions:

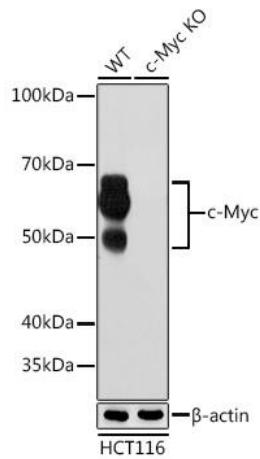
WB	1:1000 - 1:2000
ELISA	Recommended starting concentration is 1 µg/mL. Please optimize the concentration based on your specific assay requirements. ChIP 5µg antibody for 10µg-15µg of Chromatin CUT&Tag 10 ⁵ cells /1 µg

Protein Quantification (Optional): To quantify total protein levels, use the Bradford Reagent included in this kit. Visit <https://www.assaygenie.com/bradford-protein-assay-protocol/> to view the full protocol

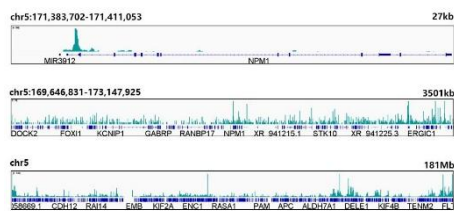
Validation Data



Western blot analysis of various lysates using [KO Validated] c-Myc Rabbit mAb (CAB19032) at 1:1000 dilution. Secondary antibody: HRP-conjugated Goat anti-Rabbit IgG (H+L) (CABS014) at 1:10000 dilution. Lysates/proteins: 25µg per lane. Blocking buffer: 3% nonfat dry milk in TBST. Detection: ECL Basic Kit (AbGn00020). Exposure time: 10s.



Western blot analysis of lysates from wild type (WT) and c-Myc knockout (KO) HCT 116 cells, using [KO Validated] c-Myc Rabbit mAb (CAB19032) at 1:1000 dilution. Secondary antibody: HRP-conjugated Goat anti-Rabbit IgG (H+L) (CABS014) at 1:10000 dilution. Lysates/proteins: 25µg per lane. Blocking buffer: 3% nonfat dry milk in TBST. Detection: ECL Basic Kit (AbGn00020). Exposure time: 10s.



UT&Tag was performed using the CUT&Tag Assay Kit (pAG-Tn5) for Illumina from 10^5 cells with 1µg c-Myc Rabbit mAb(CAB19032), along with a Goat Anti-Rabbit IgG(H+L). The CUT&Tag results indicate the enrichment pattern of in representative gene loci, as shown in figure.