

Cytokeratin 19 (KRT19) Monoclonal Antibody

CAB19040

Description

This Cytokeratin 19 (KRT19) Monoclonal Antibody is supplied as a kit for advanced applications. The kit includes Bradford Reagent to quantify total protein concentration for accurate sample normalization (Optional).

Product Information

SKU:	CAB19040
Contents:	20 µL, 100 µL Bradford Reagent: 1 vial (2ml)
Category:	Monoclonal Antibody
Synonyms:	K19, KRT19, K1CS, Cytokeratin 19 (CK19)
Clone:	ARC2811
Applications:	WB IHC-P IF/ICC ELISA IF-P
Conjugation:	Unconjugated
Reactivity:	Human

Antibody Data

Gene ID:	3880
Uniprot:	AB_2862533
Host Species:	Rabbit
Purification:	Affinity purification
Observed MW:	44 kDa
Calculated MW:	44 kDa

Preparation & Storage

Storage: Store at -20°C. Avoid freeze / thaw cycles. Buffer: PBS containing 50% glycerol and 0.05% BSA, preserved with proclin300 or sodium azide (as specified on the Certificate of Analysis), pH 7.3.

Store Bradford Reagent at Room Temperature for 1 Year.

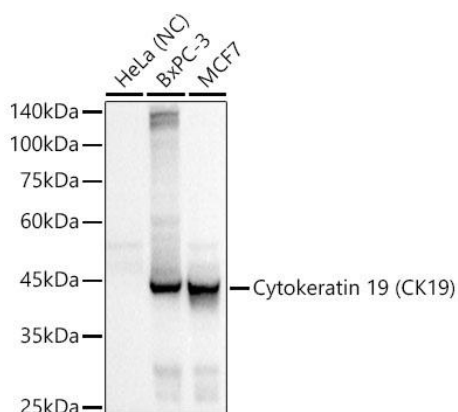
Positive Sample: BxPC-3, MCF7

Recommended Dilutions:

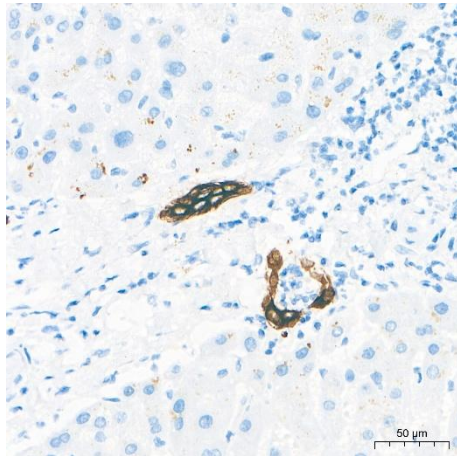
WB	1:500 - 1:3000
IF/ICC	1:100 - 1:400
IF-P	1:100 - 1:400
IHC-P	1:2000 - 1:8000
ELISA	Recommended starting concentration is 1 µg/mL. Please optimize the concentration based on your specific assay requirements.

Protein Quantification (Optional): To quantify total protein levels, use the Bradford Reagent included in this kit. Visit <https://www.assaygenie.com/bradford-protein-assay-protocol/> to view the full protocol

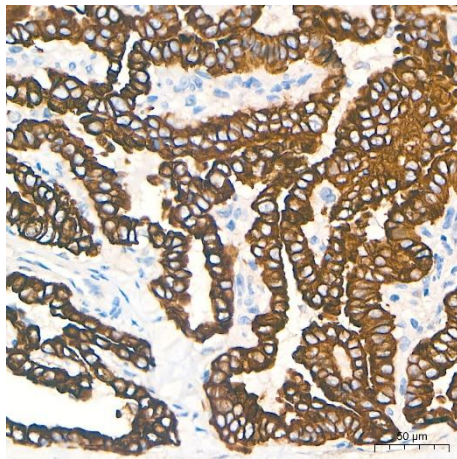
Validation Data



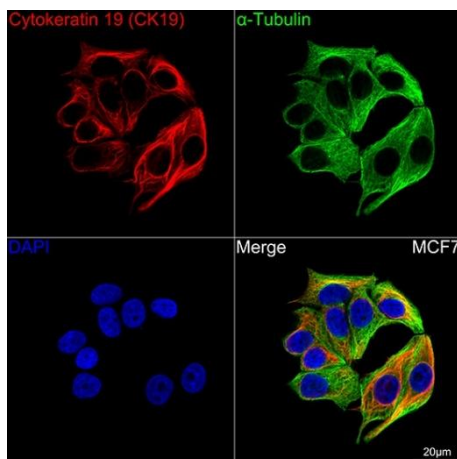
Western blot analysis of various lysates using Cytokeratin 19 Rabbit mAb (CAB19040) at 1:500 dilution incubated overnight at 4°C. Secondary antibody: HRP-conjugated Goat anti-Rabbit IgG (H+L) (CABS014) at 1:10000 dilution. Lysates/proteins: 25µg per lane. Blocking buffer: 3% nonfat dry milk in TBST. Detection: ECL Basic Kit (AbGn00020). Negative control (NC): HeLa Exposure time: 0.5s.



Immunohistochemistry analysis of paraffin-embedded Human liver tissue using Cytokeratin 19 Rabbit mAb (CAB19040) at a dilution of 1:2500 (40x lens). High pressure antigen retrieval performed with 0.01M Tris-EDTA Buffer (pH 9.0) prior to IHC staining.



Immunohistochemistry analysis of paraffin-embedded Human thyroid cancer tissue using Cytokeratin 19 Rabbit mAb (CAB19040) at a dilution of 1:2500 (40x lens). High pressure antigen retrieval performed with 0.01M Tris-EDTA Buffer (pH 9.0) prior to IHC staining.



Confocal imaging of cells using Cytokeratin 19 Rabbit mAb (CAB19040, dilution 1:200) followed by a further incubation with Cy3-conjugated Goat Anti-Rabbit IgG (H+L) (CABS007, dilution 1:500) (Red). The cells were counterstained with α -Tubulin Mouse mAb (CABC012, dilution 1:400) followed by incubation with ABflo® 488-conjugated Goat Anti-Mouse IgG (H+L) (, dilution 1:500) (Green). DAPI was used for nuclear staining (Blue). Objective: 100x.