

GRB2 Monoclonal Antibody

CAB19059

Description

This GRB2 Monoclonal Antibody is supplied as a kit for advanced applications. The kit includes Bradford Reagent to quantify total protein concentration for accurate sample normalization (Optional).

Product Information

SKU:	CAB19059
Contents:	20 µL, 100 µL Bradford Reagent: 1 vial (2ml)
Category:	Monoclonal Antibody
Synonyms:	ASH, Grb3-3, MST084, NCKAP2, MSTP084, EGFRBP-GRB2, GRB2
Clone:	ARC0430
Applications:	WB IHC-P IF/ICC IP ELISA
Conjugation:	Unconjugated
Reactivity:	Human, Mouse, Rat

Antibody Data

Gene ID:	2885
Uniprot:	AB_2862552
Host Species:	Rabbit
Purification:	Affinity purification
Observed MW:	25kDa
Calculated MW:	25kDa

Preparation & Storage

Storage: Store at -20°C. Avoid freeze / thaw cycles. Buffer: PBS containing 50% glycerol and 0.05% BSA, preserved with proclin300 or sodium azide (as specified on the Certificate of Analysis), pH 7.3.

Store Bradford Reagent at Room Temperature for 1 Year.

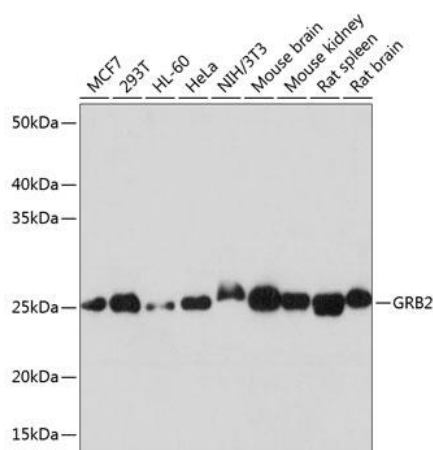
Positive Sample: MCF7, 293T, HL-60, HeLa, NIH/3T3, Mouse brain, Mouse kidney, Rat spleen, Rat brain

Recommended Dilutions:

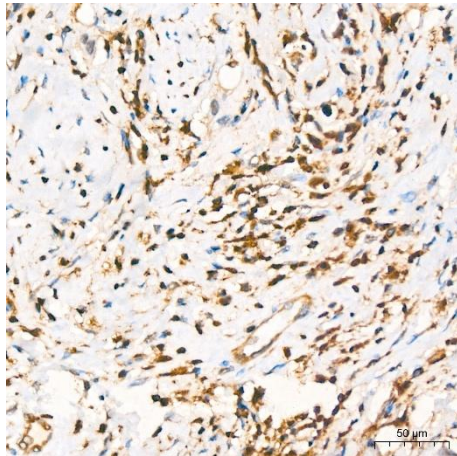
WB	1:1000 - 1:6000
IHC-P	1:200 - 1:800
IF/ICC	1:100 - 1:800
IP	0.5µg-4µg antibody for 200µg-400µg extracts of whole cells
ELISA	Recommended starting concentration is 1 µg/mL. Please optimize the concentration based on your specific assay requirements.

Protein Quantification (Optional): To quantify total protein levels, use the Bradford Reagent included in this kit. Visit <https://www.assaygenie.com/bradford-protein-assay-protocol/> to view the full protocol

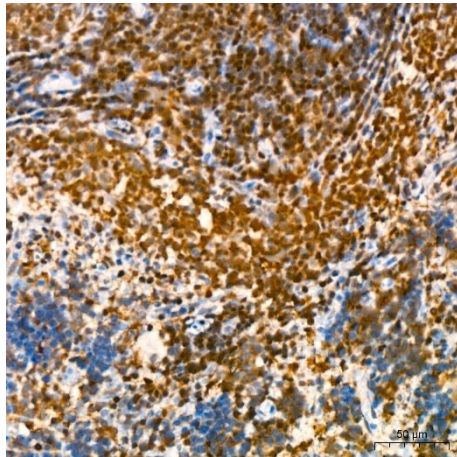
Validation Data



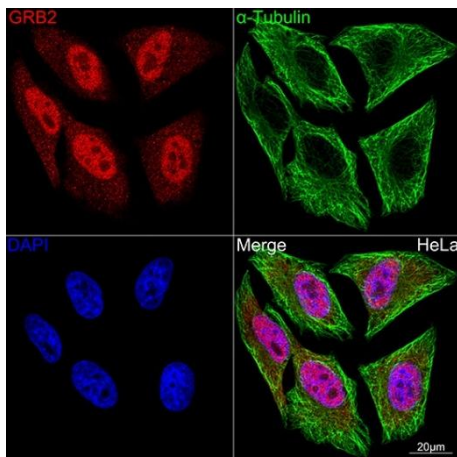
Western blot analysis of various lysates using Rabbit mAb (CAB19059) at 1:1000 dilution. Secondary antibody: HRP-conjugated Goat anti-Rabbit IgG (H+L) (CABS014) at 1:10000 dilution. Lysates/proteins: 25µg per lane. Blocking buffer: 3% nonfat dry milk in TBST. Detection: ECL Basic Kit (AbGn00020). Exposure time: 5s.



Immunohistochemistry analysis of paraffin-embedded Human breast cancer using Rabbit mAb (CAB19059) at dilution of 1:200 (40x lens). High pressure antigen retrieval performed with 0.01M Citrate buffer (pH 6.0) prior to IHC staining.



Immunohistochemistry analysis of paraffin-embedded Rat spleen using Rabbit mAb (CAB19059) at dilution of 1:200 (40x lens). High pressure antigen retrieval performed with 0.01M Citrate buffer (pH 6.0) prior to IHC staining.



Confocal imaging of HeLa cells using Rabbit mAb (CAB19059, dilution 1:100) (Red). The cells were counterstained with α -Tubulin Mouse mAb (CABC012, dilution 1:400) (Green). DAPI was used for nuclear staining (blue). Objective: 100x.