

Integrin beta 3 (ITGB3/CD61) Monoclonal Antibody

CAB19073

Description

This Integrin beta 3 (ITGB3/CD61) Monoclonal Antibody is supplied as a kit for advanced applications. The kit includes Bradford Reagent to quantify total protein concentration for accurate sample normalization (Optional).

Product Information

SKU:	CAB19073
Contents:	20 µL, 100 µL Bradford Reagent: 1 vial (2ml)
Category:	Monoclonal Antibody
Synonyms:	GT, GT2, CD61, GP3A, BDPLT2, GPIIIa, BDPLT16, BDPLT24, Integrin beta 3 (ITGB3/CD61)
Clone:	ARC0460
Applications:	WB IP ELISA FC (intra)
Conjugation:	Unconjugated
Reactivity:	Human, Mouse, Rat

Antibody Data

Gene ID:	3690
Uniprot:	AB_2862565
Host Species:	Rabbit
Purification:	Affinity purification
Observed MW:	100kDa
Calculated MW:	87kDa

Preparation & Storage

Storage: Store at -20°C. Avoid freeze / thaw cycles. Buffer: PBS containing 50% glycerol and 0.05% BSA, preserved with proclin300 or sodium azide (as specified on the Certificate of Analysis), pH 7.3.

Store Bradford Reagent at Room Temperature for 1 Year.

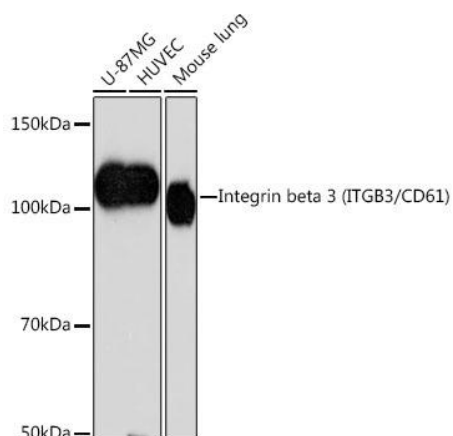
Positive Sample: U-87MG, HUVEC, Mouse lung

Recommended Dilutions:

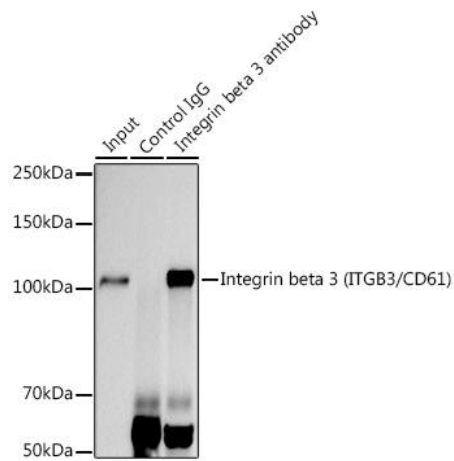
WB	1:1000 - 1:2000
IP	0.5µg-4µg antibody for 200µg-400µg extracts of whole cells
FC	(intra) 1:50 - 1:200
ELISA	Recommended starting concentration is 1 µg/mL. Please optimize the concentration based on your specific assay requirements.

Protein Quantification (Optional): To quantify total protein levels, use the Bradford Reagent included in this kit. Visit <https://www.assaygenie.com/bradford-protein-assay-protocol/> to view the full protocol

Validation Data



Western blot analysis of various lysates using Integrin beta 3 (ITGB3/CD61) Rabbit mAb (CAB19073) at 1:1000 dilution. Secondary antibody: HRP-conjugated Goat anti-Rabbit IgG (H+L) (CABS014) at 1:10000 dilution. Lysates/proteins: 25µg per lane. Blocking buffer: 3% nonfat dry milk in TBST. Detection: ECL Basic Kit (AbGn00020). Exposure time: 90s.



Immunoprecipitation analysis of 300 µg extracts of U-87MG cells using 3 µg Integrin beta 3 (ITGB3/) antibody (CAB19073). Western blot was performed from the immunoprecipitate using Integrin beta 3 (ITGB3/) antibody (CAB19073) at a dilution of 1:1000.