

## [KO Validated] Smad3 Monoclonal Antibody

CAB19115

### Description

---

This [KO Validated] Smad3 Monoclonal Antibody is supplied as a kit for advanced applications. The kit includes Bradford Reagent to quantify total protein concentration for accurate sample normalization (Optional).

### Product Information

---

<b>SKU:</b>	CAB19115
<b>Contents:</b>	20 µL, 100 µL Bradford Reagent: 1 vial (2ml)
<b>Category:</b>	Monoclonal Antibody
<b>Synonyms:</b>	LDS3, mad3, LDS1C, MADH3, JV15-2, hMAD-3, hSMAD3, HSPC193, HsT17436, d3
<b>Clone:</b>	ARC53861
<b>Applications:</b>	WB IHC-P IP ChIP ELISA
<b>Conjugation:</b>	Unconjugated
<b>Reactivity:</b>	Human, Mouse, Rat

### Antibody Data

---

<b>Gene ID:</b>	4088
<b>Uniprot:</b>	AB_2862608
<b>Host Species:</b>	Rabbit
<b>Purification:</b>	Protein A
<b>Observed MW:</b>	52kDa
<b>Calculated MW:</b>	48kDa

## Preparation & Storage

**Storage:** Store at -20°C. Avoid freeze / thaw cycles. Buffer: PBS containing 50% glycerol and 0.05% BSA, preserved with proclin300 or sodium azide (as specified on the Certificate of Analysis), pH 7.3.

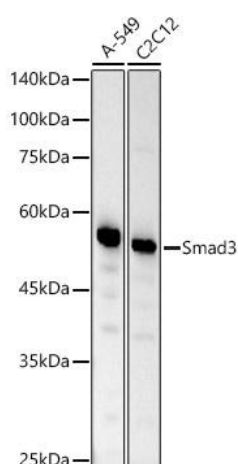
Store Bradford Reagent at Room Temperature for 1 Year.

**Positive Sample:** HCT116, A-549, C2C12, Rat testis

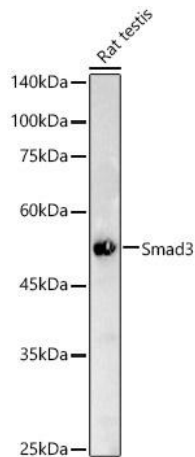
<b>Recommended Dilutions:</b>	<b>WB</b>	1:10000 - 1:60000
	<b>IHC-P</b>	1:200 - 1:2000
	<b>IP</b>	0.5µg-4µg antibody for 200µg-400µg extracts of whole cells ChIP 3µg antibody for 15µg-25µg of Chromatin
	<b>ELISA</b>	Recommended starting concentration is 1 µg/mL. Please optimize the concentration based on your specific assay requirements.

**Protein Quantification (Optional):** To quantify total protein levels, use the Bradford Reagent included in this kit. Visit <https://www.assaygenie.com/bradford-protein-assay-protocol/> to view the full protocol

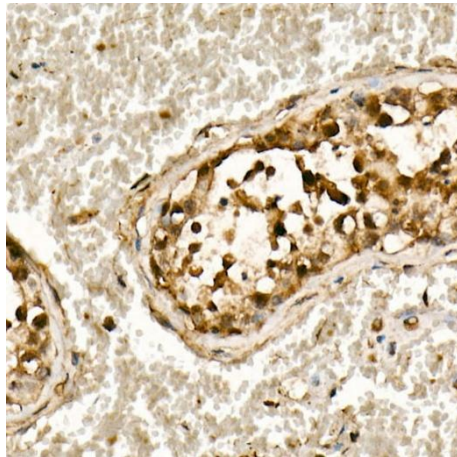
## Validation Data



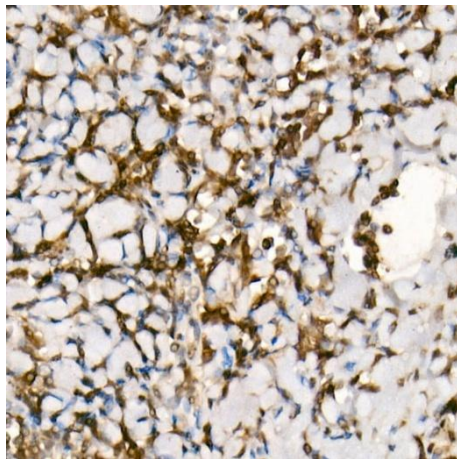
Western blot analysis of various lysates, using Smad3 Rabbit mAb (CAB19115) at 1:20000 dilution. Secondary antibody: HRP-conjugated Goat anti-Rabbit IgG (H+L) (CABS014) at 1:10000 dilution. Lysates/proteins: 25µg per lane. Blocking buffer: 3% nonfat dry milk in TBST. Detection: ECL Basic Kit (AbGn00020). Exposure time: 30s.



Western blot analysis of lysates from Rat testis, using Smad3 Rabbit mAb (CAB19115) at 1:20000 dilution. Secondary antibody: HRP-conjugated Goat anti-Rabbit IgG (H+L) (CABS014) at 1:10000 dilution. Lysates/proteins: 25µg per lane. Blocking buffer: 3% nonfat dry milk in TBST. Detection: ECL Basic Kit (AbGn00020). Exposure time: 30s.



Immunohistochemistry analysis of paraffin-embedded Human testis using [KO Validated] Smad3 Rabbit mAb (CAB19115) at dilution of 1:200 (40x lens). High pressure antigen retrieval performed with 0.01M Citrate buffer (pH 6.0) prior to IHC staining.



Immunohistochemistry analysis of paraffin-embedded Human tonsil using [KO Validated] Smad3 Rabbit mAb (CAB19115) at dilution of 1:200 (40x lens). High pressure antigen retrieval performed with 0.01M Citrate buffer (pH 6.0) prior to IHC staining.