

CXCL10 Antibody

CAB19138

Description

This CXCL10 Antibody is supplied as a kit for advanced applications. The kit includes Bradford Reagent to quantify total protein concentration for accurate sample normalization (Optional).

Product Information

SKU:	CAB19138
Contents:	20 μ L, 100 μ L Bradford Reagent: 1 vial (2ml)
Category:	Polyclonal Antibody
Synonyms:	C7, IFI10, INP10, IP-10, crg-2, mob-1, SCYB10, gIP-10, CXCL10/IP-10
Clone:	-
Applications:	WB IF/ICC ELISA
Conjugation:	Unconjugated
Reactivity:	Human, Mouse

Antibody Data

Gene ID:	3627
Uniprot:	AB_2862631
Host Species:	Rabbit
Purification:	Affinity purification
Observed MW:	11kDa
Calculated MW:	11kDa

Preparation & Storage

Storage: Store at -20°C. Avoid freeze / thaw cycles. Buffer: PBS containing 50% glycerol, preserved with proclin300 or sodium azide (as specified on the Certificate of Analysis), pH 7.3.

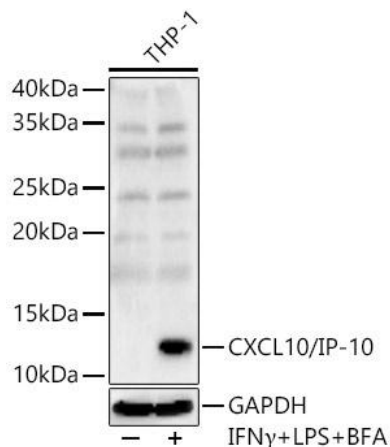
Store Bradford Reagent at Room Temperature for 1 Year.

Positive Sample: THP-1 treated with LPS , Brefeldin A and IFN γ

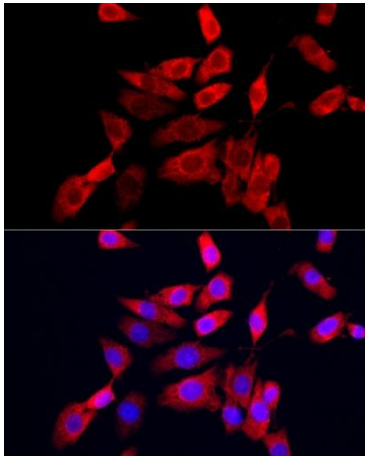
Recommended Dilutions:	WB	1:1000 - 1:5000
	IF/ICC	1:50 - 1:200
	ELISA	Recommended starting concentration is 1 μ g/mL. Please optimize the concentration based on your specific assay requirements.

Protein Quantification (Optional): To quantify total protein levels, use the Bradford Reagent included in this kit. Visit <https://www.assaygenie.com/bradford-protein-assay-protocol/> to view the full protocol

Validation Data



Western blot analysis of lysates from THP-1 cells, using CXCL10/IP-10 Rabbit pAb (CAB19138) at 1:3000 dilution. THP-1 cells were treated with LPS for 6 hours, Brefeldin A for 3 hours and IFN γ (50ng/ml) for 8 hours of stimulation. Secondary antibody: HRP-conjugated Goat anti-Rabbit IgG (H+L) (CABS014) at 1:10000 dilution. Lysates/proteins: 25 μ g per lane. Blocking buffer: 3% nonfat dry milk in TBST. Detection: ECL Basic Kit (AbGn00020). Exposure time: 30s.



Immunofluorescence analysis of NIH/3T3 cells using CXCL10/IP-10 Rabbit pAb (CAB19138) at dilution of 1:200 (40x lens). Secondary antibody: Cy3-conjugated Goat anti-Rabbit IgG (H+L) (CABS007) at 1:500 dilution. Blue: DAPI for nuclear staining.