

Cytokeratin 12 (KRT12) Monoclonal Antibody

CAB19284

Description

This Cytokeratin 12 (KRT12) Monoclonal Antibody is supplied as a kit for advanced applications. The kit includes Bradford Reagent to quantify total protein concentration for accurate sample normalization (Optional).

Product Information

SKU:	CAB19284
Contents:	20 μ L, 100 μ L Bradford Reagent: 1 vial (2ml)
Category:	Monoclonal Antibody
Synonyms:	K12, MECD1, Cytokeratin 12 (KRT12)
Clone:	ARC2465
Applications:	IHC-P ELISA IF-P
Conjugation:	Unconjugated
Reactivity:	Mouse, Rat

Antibody Data

Gene ID:	3859
Uniprot:	-
Host Species:	Rabbit
Purification:	Affinity purification
Observed MW:	Refer to figures
Calculated MW:	54kDa

Preparation & Storage

Storage: Store at -20°C. Avoid freeze / thaw cycles. Buffer: PBS containing 50% glycerol and 0.05% BSA, preserved with proclin300 or sodium azide (as specified on the Certificate of Analysis), pH 7.3.
Store Bradford Reagent at Room Temperature for 1 Year.

Positive Sample: -

Recommended Dilutions:	IF-P	1:50 - 1:200
	IHC-P	1:50 - 1:200
	ELISA	Recommended starting concentration is 1 µg/mL. Please optimize the concentration based on your specific assay requirements.

Protein Quantification (Optional): To quantify total protein levels, use the Bradford Reagent included in this kit. Visit <https://www.assaygenie.com/bradford-protein-assay-protocol/> to view the full protocol

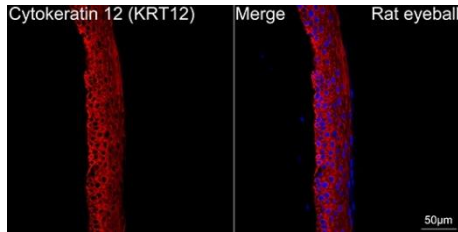
Validation Data



Immunohistochemistry analysis of paraffin-embedded Rat cornea using Cytokeratin 12 Rabbit mAb (CAB19284) at dilution of 1:100 (40x lens). Microwave antigen retrieval performed with 0.01M Tris/EDTA Buffer (pH 9.0) prior to IHC staining.



Immunohistochemistry analysis of paraffin-embedded Mouse cornea using Cytokeratin 12 Rabbit mAb (CAB19284) at dilution of 1:100 (40x lens). Microwave antigen retrieval performed with 0.01M Tris/EDTA Buffer (pH 9.0) prior to IHC staining.



Confocal imaging of paraffin-embedded Rat eyeball tissue using Cytokeratin 12 Rabbit mAb (CAB19284, dilution 1:200) followed by a further incubation with Cy3 Goat Anti-Rabbit IgG (H+L) (CABS007, dilution 1:500) (Red). DAPI was used for nuclear staining (Blue). Objective: 40x. Perform high pressure antigen retrieval with 0.01 M citrate buffer (pH 6.0) prior to IF staining.