

Acetyl-Histone H4-K5 Monoclonal Antibody

CAB19525

Description

This Acetyl-Histone H4-K5 Monoclonal Antibody is supplied as a kit for advanced applications. The kit includes Bradford Reagent to quantify total protein concentration for accurate sample normalization (Optional).

Product Information

SKU:	CAB19525
Contents:	20 µL, 100 µL Bradford Reagent: 1 vial (2ml)
Category:	Monoclonal Antibody
Synonyms:	H4/p, H4C1, H4C2, H4C3, H4C4, H4C5, H4C6, H4C8, H4C9, H4-16, H4C11, H4C12, H4C13, H4C14, H4C15, HIST4H4, Acetyl-Histone H4-K5
Clone:	ARC0002
Applications:	WB IHC-P IF/ICC ELISA DB
Conjugation:	Unconjugated
Reactivity:	Human, Mouse, Rat, Other (Wide Range Predicted)

Antibody Data

Gene ID:	8359
Uniprot:	AB_2862648
Host Species:	Rabbit
Purification:	Affinity purification
Observed MW:	11kDa
Calculated MW:	11kDa

Preparation & Storage

Storage: Store at -20°C. Avoid freeze / thaw cycles. Buffer: PBS containing 50% glycerol and 0.05% BSA, preserved with proclin300 or sodium azide (as specified on the Certificate of Analysis), pH 7.3.

Store Bradford Reagent at Room Temperature for 1 Year.

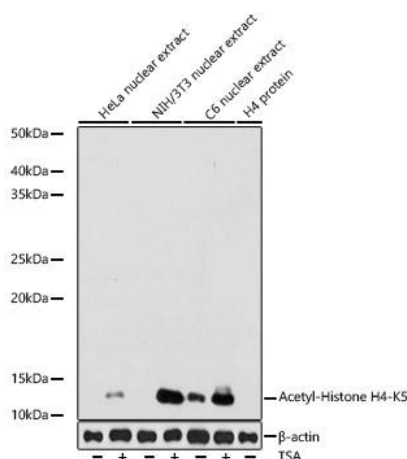
Positive Sample: HeLa treated with TSA, NIH/3T3 treated with TSA, C6 treated with TSA

Recommended Dilutions:

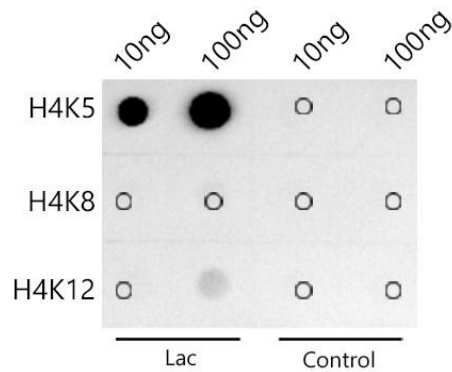
WB	1:500 - 1:1000
DB	1:500 - 1:1000
IHC-P	1:50 - 1:200
IF/ICC	1:50 - 1:200
ELISA	Recommended starting concentration is 1 µg/mL. Please optimize the concentration based on your specific assay requirements.

Protein Quantification (Optional): To quantify total protein levels, use the Bradford Reagent included in this kit. Visit <https://www.assaygenie.com/bradford-protein-assay-protocol/> to view the full protocol

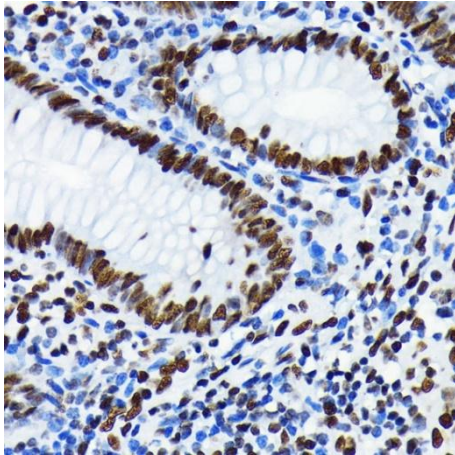
Validation Data



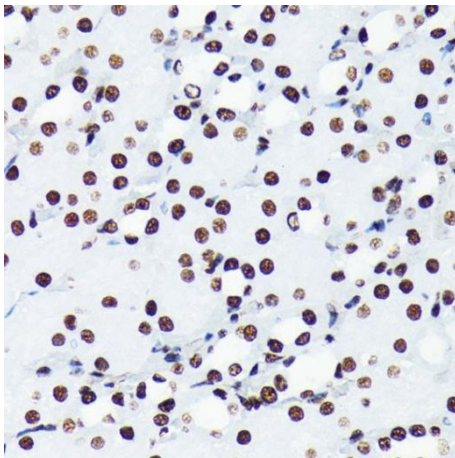
Western blot analysis of various lysates using Acetyl-Histone - Rabbit mAb (CAB19525) at 1:1000 dilution. HeLa cells and NIH/3T3 cells and cells were treated with TSA (1 µM) at 37°C for 18 hours. Secondary antibody: HRP-conjugated Goat anti-Rabbit IgG (H+L) (CABS014) at 1:10000 dilution. Lysates/proteins: 25µg per lane. Blocking buffer: 3% nonfat dry milk in TBST. Detection: ECL Basic Kit (AbGn00020). Exposure time: 10s.



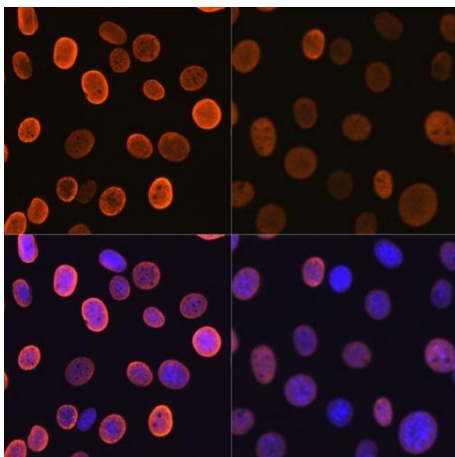
Dot-blot analysis of all sorts of peptides using Acetyl-Histone - antibody (CAB19525) at 1:1000 dilution.



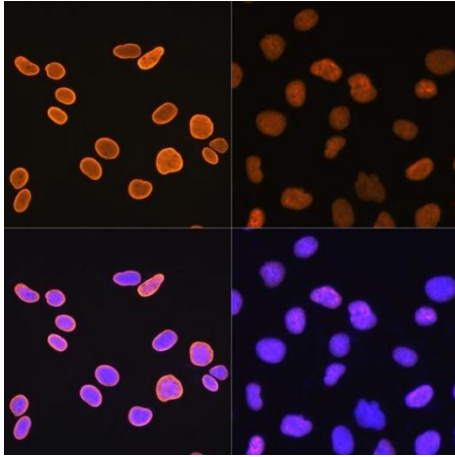
Immunohistochemistry analysis of paraffin-embedded Human appendix using Acetyl-Histone - Rabbit mAb (CAB19525) at dilution of 1:100 (40x lens). Microwave antigen retrieval performed with 0.01M PBS Buffer (pH 7.2) prior to IHC staining.



Immunohistochemistry analysis of paraffin-embedded Mouse kidney using Acetyl-Histone - Rabbit mAb (CAB19525) at dilution of 1:100 (40x lens). Microwave antigen retrieval performed with 0.01M PBS Buffer (pH 7.2) prior to IHC staining.



Immunofluorescence analysis of NIH-3T3 cells using Acetyl-Histone - Rabbit mAb (CAB19525). NIH-3T3 cells were treated with TSA (1 uM) at 37°C for 18 hours (left). Secondary antibody: Cy3-conjugated Goat anti-Rabbit IgG (H+L) (CABS007) at 1:500 dilution. Blue: DAPI for nuclear staining.



Immunofluorescence analysis of U-2 OS cells using Acetyl-Histone - Rabbit mAb (CAB19525). U-2 OS cells were treated with TSA (1 uM) at 37°C for 18 hours (left). Secondary antibody: Cy3-conjugated Goat anti-Rabbit IgG (H+L) (CABS007) at 1:500 dilution. Blue: DAPI for nuclear staining.