

## ERK1 Monoclonal Antibody

CAB19561

### Description

---

This ERK1 Monoclonal Antibody is supplied as a kit for advanced applications. The kit includes Bradford Reagent to quantify total protein concentration for accurate sample normalization (Optional).

### Product Information

---

<b>SKU:</b>	CAB19561
<b>Contents:</b>	20 $\mu$ L, 100 $\mu$ L Bradford Reagent: 1 vial (2ml)
<b>Category:</b>	Monoclonal Antibody
<b>Synonyms:</b>	ERK1, ERT2, ERK-1, PRKM3, P44ERK1, P44MAPK, HS44KDAP, HUMKER1A, p44-ERK1, p44-MAPK, K1
<b>Clone:</b>	ARC2591
<b>Applications:</b>	WB IHC-P IF/ICC IP ELISA IF-P
<b>Conjugation:</b>	Unconjugated
<b>Reactivity:</b>	Human, Mouse

### Antibody Data

---

<b>Gene ID:</b>	5595
<b>Uniprot:</b>	AB_2862668
<b>Host Species:</b>	Rabbit
<b>Purification:</b>	Affinity purification
<b>Observed MW:</b>	44kDa
<b>Calculated MW:</b>	43kDa

## Preparation & Storage

**Storage:** Store at -20°C. Avoid freeze / thaw cycles. Buffer: PBS containing 50% glycerol and 0.05% BSA, preserved with proclin300 or sodium azide (as specified on the Certificate of Analysis), pH 7.3.

Store Bradford Reagent at Room Temperature for 1 Year.

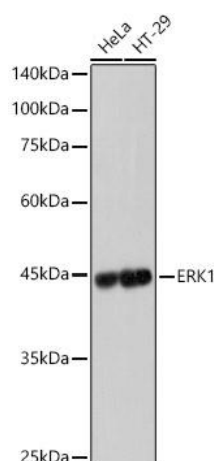
**Positive Sample:** 293T, HeLa, HT-29

**Recommended Dilutions:**

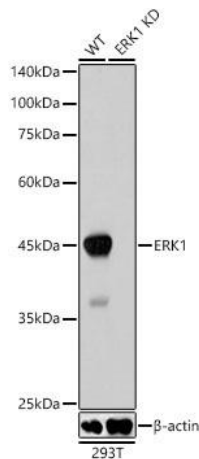
<b>WB</b>	1:1000 - 1:6000
<b>IP</b>	0.5µg-4µg antibody for 200µg-400µg extracts of whole cells
<b>IF/ICC</b>	1:100 - 1:800
<b>IF-P</b>	1:100 - 1:800
<b>IHC-P</b>	1:200 - 1:2000
<b>ELISA</b>	Recommended starting concentration is 1 µg/mL. Please optimize the concentration based on your specific assay requirements.

**Protein Quantification (Optional):** To quantify total protein levels, use the Bradford Reagent included in this kit. Visit <https://www.assaygenie.com/bradford-protein-assay-protocol/> to view the full protocol

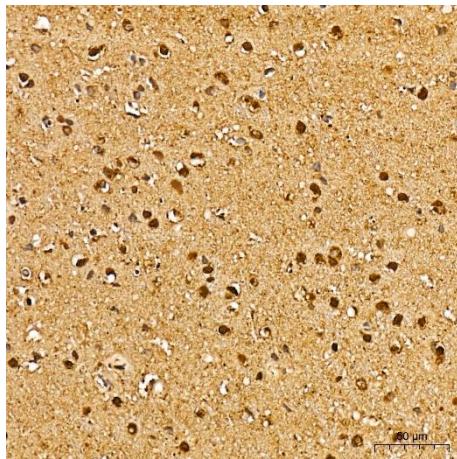
## Validation Data



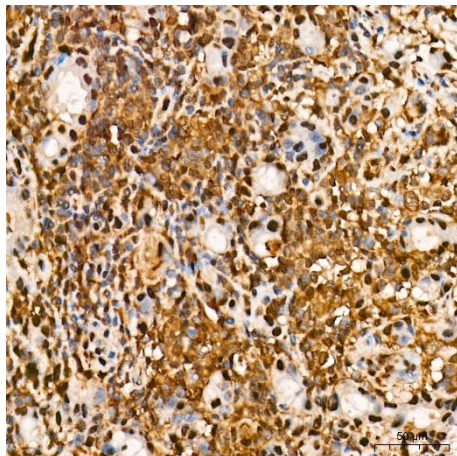
Western blot analysis of various lysates, using [KD Validated] Rabbit mAb (CAB19561) at 1:1000 dilution. Secondary antibody: HRP-conjugated Goat anti-Rabbit IgG (H+L) (CABS014) at 1:10000 dilution. Lysates/proteins: 25µg per lane. Blocking buffer: 3% nonfat dry milk in TBST. Detection: ECL Basic Kit (AbGn00020). Exposure time: 1s.



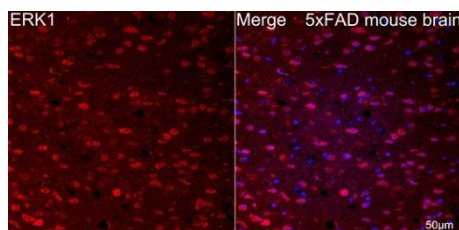
Western blot analysis of lysates from wild type (WT) and knockdown (KD) 293T cells, using [KD Validated] Rabbit mAb (CAB19561) at 1:1000 dilution. Secondary antibody: HRP-conjugated Goat anti-Rabbit IgG (H+L) (CABS014) at 1:10000 dilution. Lysates/proteins: 25µg per lane. Blocking buffer: 3% nonfat dry milk in TBST. Detection: ECL Basic Kit (AbGn00020). Exposure time: 1s.



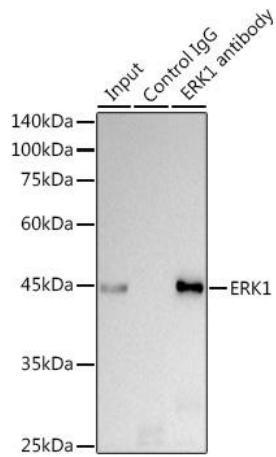
Immunohistochemistry analysis of paraffin-embedded Human brain tissue using [KD Validated] Rabbit mAb (CAB19561) at a dilution of 1:200 (40x lens). High pressure antigen retrieval was performed with 0.01 M citrate buffer (pH 6.0) prior to IHC staining.



Immunohistochemistry analysis of paraffin-embedded Human breast tissue using [KD Validated] Rabbit mAb (CAB19561) at a dilution of 1:200 (40x lens). High pressure antigen retrieval was performed with 0.01 M citrate buffer (pH 6.0) prior to IHC staining.



Confocal imaging of paraffin-embedded 5xFAD mouse brain tissue using [KD Validated] Rabbit mAb (CAB19561, dilution 1:100) followed by a further incubation with Cy3 Goat Anti-Rabbit IgG (H+L) (CABS007, dilution 1:500) (Red). DAPI was used for nuclear staining (Blue). Objective: 40x. Perform microwave antigen retrieval with 0.01 M citrate buffer (pH 6.0) prior to IF staining.



Immunoprecipitation analysis of 300 µg extracts of HeLa cells using 3 µg [KD Validated] Rabbit mAb (CAB19561). Western blot was performed from the immunoprecipitate using antibody (CAB19561) at a dilution of 1:1000.