

RIPK1/RIP Monoclonal Antibody

CAB19580

Description

This RIPK1/RIP Monoclonal Antibody is supplied as a kit for advanced applications. The kit includes Bradford Reagent to quantify total protein concentration for accurate sample normalization (Optional).

Product Information

SKU:	CAB19580
Contents:	20 µL, 100 µL Bradford Reagent: 1 vial (2ml)
Category:	Monoclonal Antibody
Synonyms:	RIP, RIP1, AIEFL, IMD57, RIP-1, RIPK1/RIP
Clone:	ARC0059
Applications:	WB IP ELISA
Conjugation:	Unconjugated
Reactivity:	Human

Antibody Data

Gene ID:	8737
Uniprot:	AB_2862680
Host Species:	Rabbit
Purification:	Affinity purification
Observed MW:	76kDa
Calculated MW:	76kDa

Preparation & Storage

Storage: Store at -20°C. Avoid freeze / thaw cycles. Buffer: PBS containing 50% glycerol and 0.05% BSA, preserved with proclin300 or sodium azide (as specified on the Certificate of Analysis), pH 7.3.

Store Bradford Reagent at Room Temperature for 1 Year.

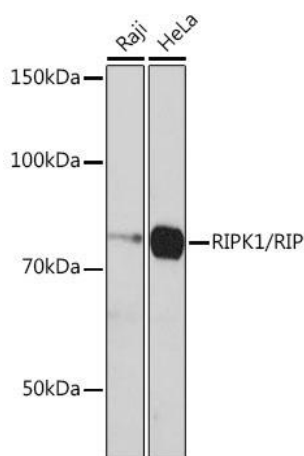
Positive Sample: Raji, HeLa, 293T

Recommended Dilutions:

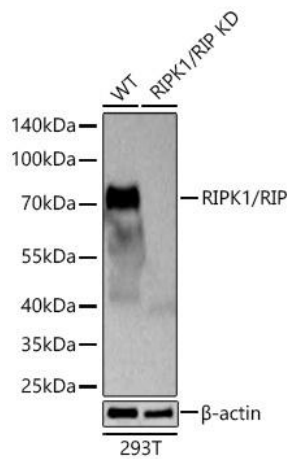
WB	1:1000 - 1:2000
IP	0.5µg-4µg antibody for 200µg-400µg extracts of whole cells
ELISA	Recommended starting concentration is 1 µg/mL. Please optimize the concentration based on your specific assay requirements.

Protein Quantification (Optional): To quantify total protein levels, use the Bradford Reagent included in this kit. Visit <https://www.assaygenie.com/bradford-protein-assay-protocol/> to view the full protocol

Validation Data



Western blot analysis of various lysates using [KD Validated] RIPK1/RIP Rabbit mAb (CAB19580) at 1:1000 dilution incubated overnight at 4°C. Secondary antibody: HRP-conjugated Goat anti-Rabbit IgG (H+L) (CABS014) at 1:10000 dilution. Lysates/proteins: 25µg per lane. Blocking buffer: 3% nonfat dry milk in TBST. Detection: ECL Basic Kit (AbGn00020). Exposure time: 3min.



Western blot analysis of lysates from wild type (WT) and RIPK1/RIP knockdown (KD) 293T cells using [KD Validated] RIPK1/RIP Rabbit mAb (CAB19580) at 1:1000 dilution incubated at room temperature for 1.5 hours. Secondary antibody: HRP-conjugated Goat anti-Rabbit IgG (H+L) (CABS014) at 1:10000 dilution. Lysates/proteins: 25 μ g per lane. Blocking buffer: 3% nonfat dry milk in TBST. Detection: ECL Basic Kit (AbGn00020). Exposure time: 45s.