

## [KO Validated] Cleaved PARP1 p25 Monoclonal Antibody

CAB19612

### Description

---

This [KO Validated] Cleaved PARP1 p25 Monoclonal Antibody is supplied as a kit for advanced applications. The kit includes Bradford Reagent to quantify total protein concentration for accurate sample normalization (Optional).

### Product Information

---

<b>SKU:</b>	CAB19612
<b>Contents:</b>	20 µL, 100 µL Bradford Reagent: 1 vial (2ml)
<b>Category:</b>	Monoclonal Antibody
<b>Synonyms:</b>	PARP, PARS, PPOL, ADPRT, ARTD1, ADPRT1, PARP-1, ADPRT 1, pADPRT-1, Poly-PARP, Cleaved PARP1 p25
<b>Clone:</b>	ARC0091
<b>Applications:</b>	<span>WB</span> <span>IP</span> <span>ELISA</span>
<b>Conjugation:</b>	Unconjugated
<b>Reactivity:</b>	Human, Mouse

### Antibody Data

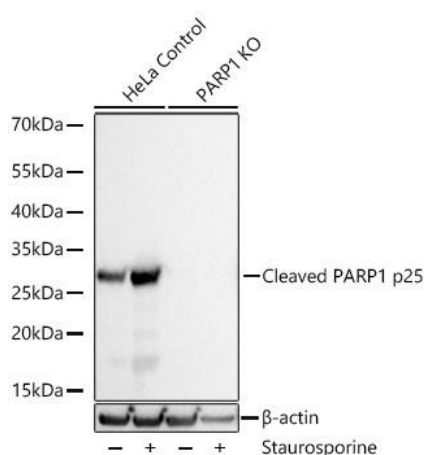
---

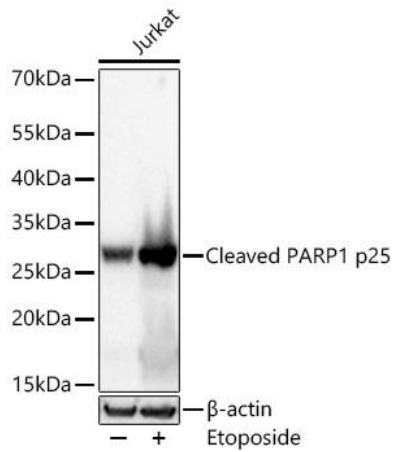
<b>Gene ID:</b>	142
<b>Uniprot:</b>	AB_2862700
<b>Host Species:</b>	Rabbit
<b>Purification:</b>	Affinity purification
<b>Observed MW:</b>	25 kDa
<b>Calculated MW:</b>	113 kDa

## Preparation & Storage

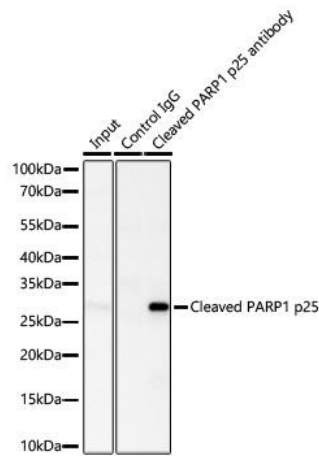
<b>Storage:</b>	Store at -20°C. Avoid freeze / thaw cycles. Buffer: PBS containing 50% glycerol and 0.05% BSA, preserved with proclin300 or sodium azide (as specified on the Certificate of Analysis), pH 7.3. Store Bradford Reagent at Room Temperature for 1 Year.						
<b>Positive Sample:</b>	Jurkat treated with Etoposide, NIH/3T3 treated with Staurosporine, HeLa treated with Staurosporine						
<b>Recommended Dilutions:</b>	<table border="1"> <tr> <td><b>WB</b></td><td>1:10000 - 1:40000</td></tr> <tr> <td><b>IP</b></td><td>0.5µg-4µg antibody for 400µg-600µg extracts of whole cells</td></tr> <tr> <td><b>ELISA</b></td><td>Recommended starting concentration is 1 µg/mL. Please optimize the concentration based on your specific assay requirements.</td></tr> </table>	<b>WB</b>	1:10000 - 1:40000	<b>IP</b>	0.5µg-4µg antibody for 400µg-600µg extracts of whole cells	<b>ELISA</b>	Recommended starting concentration is 1 µg/mL. Please optimize the concentration based on your specific assay requirements.
<b>WB</b>	1:10000 - 1:40000						
<b>IP</b>	0.5µg-4µg antibody for 400µg-600µg extracts of whole cells						
<b>ELISA</b>	Recommended starting concentration is 1 µg/mL. Please optimize the concentration based on your specific assay requirements.						
<b>Protein Quantification (Optional):</b>	To quantify total protein levels, use the Bradford Reagent included in this kit. Visit <a href="https://www.assaygenie.com/bradford-protein-assay-protocol/">https://www.assaygenie.com/bradford-protein-assay-protocol/</a> to view the full protocol						

## Validation Data





Western blot analysis of lysates from Jurkat cells using Cleaved PARP1 p25 Rabbit mAb (CAB19612) at 1:10000 dilution incubated at room temperature for 1.5 hours. Jurkat cells were treated with Etoposide (25  $\mu$ M) at 37°C for 5 hours. Secondary antibody: HRP-conjugated Goat anti-Rabbit IgG (H+L) (CABS014) at 1:10000 dilution. Lysates/proteins: 30  $\mu$ g per lane. Blocking buffer: 3 % nonfat dry milk in TBST. Detection: ECL Basic Kit (AbGn00020). Exposure time: 1s.



Immunoprecipitation of Cleaved PARP1 p25 from 600  $\mu$ g extracts of Jurkat cells was performed using 2  $\mu$ g of Cleaved PARP1 p25 Rabbit mAb (CAB19612). Rabbit IgG isotype control (CABC005) was used to precipitate the Control IgG sample. IP samples were eluted with 1X reducing Laemmli Buffer. The Input lane represents 10% of the total input. Western blot analysis of immunoprecipitates was conducted using Cleaved PARP1 p25 Rabbit mAb (CAB19612) at a dilution of 1:1000.