

[KO Validated] TTC11/FIS1 Monoclonal Antibody

CAB19666

Description

This [KO Validated] TTC11/FIS1 Monoclonal Antibody is supplied as a kit for advanced applications. The kit includes Bradford Reagent to quantify total protein concentration for accurate sample normalization (Optional).

Product Information

SKU:	CAB19666
Contents:	20 µL, 100 µL Bradford Reagent: 1 vial (2ml)
Category:	Monoclonal Antibody
Synonyms:	TTC11, CGI-135, S1
Clone:	ARC5010-03
Applications:	WB IHC-P IF/ICC IP ELISA
Conjugation:	Unconjugated
Reactivity:	Human, Mouse, Rat

Antibody Data

Gene ID:	51024
Uniprot:	AB_2862724
Host Species:	Rabbit
Purification:	Affinity purification
Observed MW:	15 kDa
Calculated MW:	17 kDa

Preparation & Storage

Storage: Store at -20°C. Avoid freeze / thaw cycles. Buffer: PBS containing 50% glycerol and 0.05% BSA, preserved with proclin300 or sodium azide (as specified on the Certificate of Analysis), pH 7.3.

Store Bradford Reagent at Room Temperature for 1 Year.

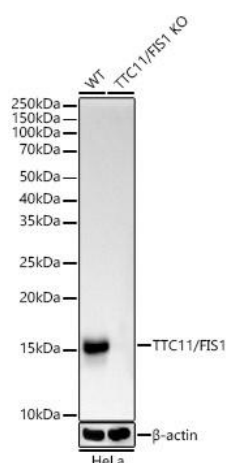
Positive Sample: HeLa, HepG2, Mouse heart, Rat spleen, Rat brain

Recommended Dilutions:

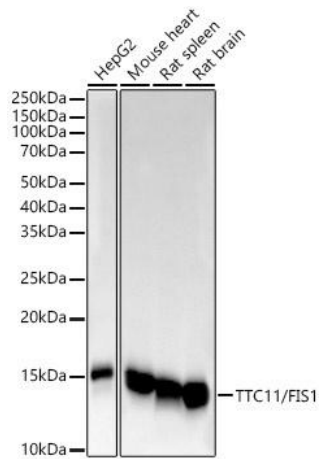
WB	1:1000 - 1:6000
IHC-P	1:100 - 1:400
IF/ICC	1:100 - 1:400
IP	0.5µg-4µg antibody for 200µg-400µg extracts of whole cells
ELISA	Recommended starting concentration is 1 µg/mL. Please optimize the concentration based on your specific assay requirements.

Protein Quantification (Optional): To quantify total protein levels, use the Bradford Reagent included in this kit. Visit <https://www.assaygenie.com/bradford-protein-assay-protocol/> to view the full protocol

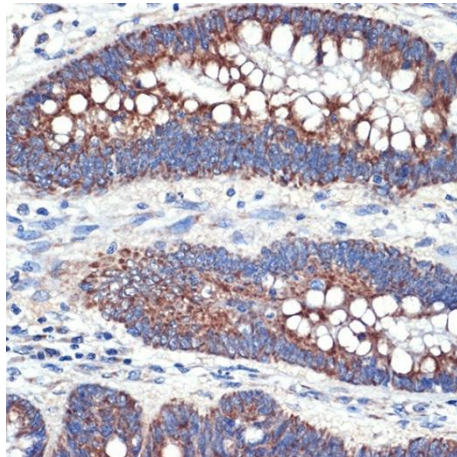
Validation Data



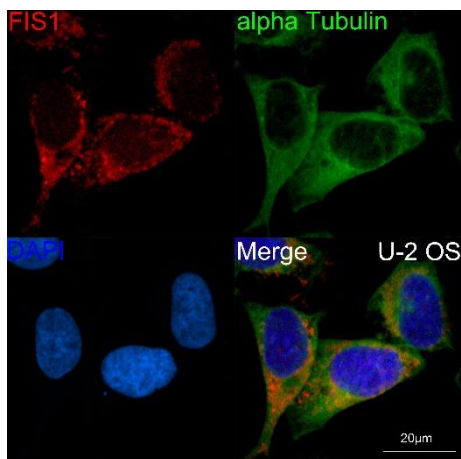
Western blot analysis of lysates from wild type (WT) and / knockout (KO) HeLa(KO) cells, using [KO Validated] / Rabbit mAb (CAB19666) at 1:1000 dilution incubated overnight at 4°C. Secondary antibody: HRP-conjugated Goat anti-Rabbit IgG (H+L) (CABS014) at 1:10000 dilution. Lysates/proteins: 25µg per lane. Blocking buffer: 3% nonfat dry milk in TBST. Detection: ECL Basic Kit (AbGn00020). Exposure time: 10s.



Western blot analysis of various lysates, using [KO Validated] / Rabbit mAb (CAB19666) at 1:1000 dilution incubated overnight at 4°C. Secondary antibody: HRP-conjugated Goat anti-Rabbit IgG (H+L) (CABS014) at 1:10000 dilution. Lysates/proteins: 25µg per lane. Blocking buffer: 3% nonfat dry milk in TBST. Detection: ECL Basic Kit (AbGn00020). Exposure time: 10s.



Immunohistochemistry analysis of paraffin-embedded Human colon carcinoma tissue using [KO Validated] / Rabbit mAb (CAB19666) at a dilution of 1:100 (40x lens). Microwave antigen retrieval performed with 0.01M Tris-EDTA Buffer (pH 9.0) prior to IHC staining.



Confocal imaging of U-2 OS cells using [KO Validated] / Rabbit mAb (CAB19666, dilution 1:100) (Red). The cells were counterstained with α-Tubulin Mouse mAb (CABC012, dilution 1:400) (Green). DAPI was used for nuclear staining (blue). Objective: 60x.