

Casein Kinase 2 alpha (CSNK2A1) Monoclonal Antibody

CAB19683

Description

This Casein Kinase 2 alpha (CSNK2A1) Monoclonal Antibody is supplied as a kit for advanced applications. The kit includes Bradford Reagent to quantify total protein concentration for accurate sample normalization (Optional).

Product Information

SKU:	CAB19683
Contents:	20 µL, 100 µL Bradford Reagent: 1 vial (2ml)
Category:	Monoclonal Antibody
Synonyms:	CKII, Cka1, Cka2, CK2A1, OCNDS, [KD Validated] Casein Kinase 2 alpha (CSNK2A1)
Clone:	ARC0163
Applications:	WB ELISA
Conjugation:	Unconjugated
Reactivity:	Human

Antibody Data

Gene ID:	1457
Uniprot:	AB_2862732
Host Species:	Rabbit
Purification:	Affinity purification
Observed MW:	45 kDa
Calculated MW:	45 kDa

Preparation & Storage

Storage: Store at -20°C. Avoid freeze / thaw cycles. Buffer: PBS containing 50% glycerol and 0.05% BSA, preserved with proclin300 or sodium azide (as specified on the Certificate of Analysis), pH 7.3.

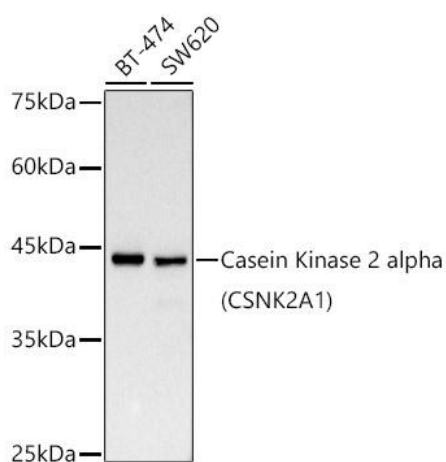
Store Bradford Reagent at Room Temperature for 1 Year.

Positive Sample: 293T, BT-474, SW620

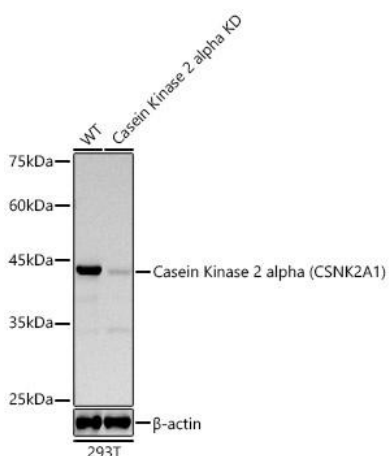
Recommended Dilutions:	WB	1:1000 - 1:3000
	ELISA	Recommended starting concentration is 1 µg/mL. Please optimize the concentration based on your specific assay requirements.

Protein Quantification (Optional): To quantify total protein levels, use the Bradford Reagent included in this kit. Visit <https://www.assaygenie.com/bradford-protein-assay-protocol/> to view the full protocol

Validation Data



Western blot analysis of various lysates, using [KD Validated] Casein Kinase 2 alpha (CSNK2A1) Rabbit mAb (CAB19683) at 1:1000 dilution. Secondary antibody: HRP-conjugated Goat anti-Rabbit IgG (H+L) (CABS014) at 1:10000 dilution. Lysates/proteins: 25µg per lane. Blocking buffer: 3% nonfat dry milk in TBST. Detection: ECL Basic Kit (AbGn00020). Exposure time: 30s.



Western blot analysis of lysates from wild type (WT) and Casein Kinase 2 alpha (CSNK2A1) knockdown (KD) 293T cells, using [KD Validated] Casein Kinase 2 alpha (CSNK2A1) Rabbit mAb (CAB19683) at 1:1000 dilution. Secondary antibody: HRP-conjugated Goat anti-Rabbit IgG (H+L) (CABS014) at 1:10000 dilution. Lysates/proteins: 25µg per lane. Blocking buffer: 3% nonfat dry milk in TBST. Detection: ECL Basic Kit (AbGn00020). Exposure time: 30s.

