

alpha Sarcoglycan (SGCA) Monoclonal Antibody

CAB19754

Description

This alpha Sarcoglycan (SGCA) Monoclonal Antibody is supplied as a kit for advanced applications. The kit includes Bradford Reagent to quantify total protein concentration for accurate sample normalization (Optional).

Product Information

SKU:	CAB19754
Contents:	20 μ L, 100 μ L Bradford Reagent: 1 vial (2ml)
Category:	Monoclonal Antibody
Synonyms:	ADL, DAG2, 50DAG, DMDA2, LGMD2D, LGMDR3, SCARMD1, adhalin, alpha Sarcoglycan (SGCA)
Clone:	ARC2280
Applications:	WB IHC-P ELISA IF-P
Conjugation:	Unconjugated
Reactivity:	Mouse, Rat

Antibody Data

Gene ID:	6442
Uniprot:	AB_3097789
Host Species:	Rabbit
Purification:	Affinity purification
Observed MW:	48kDa
Calculated MW:	43kDa

Preparation & Storage

Storage: Store at -20°C. Avoid freeze / thaw cycles. Buffer: PBS containing 50% glycerol and 0.05% BSA, preserved with proclin300 or sodium azide (as specified on the Certificate of Analysis), pH 7.3.

Store Bradford Reagent at Room Temperature for 1 Year.

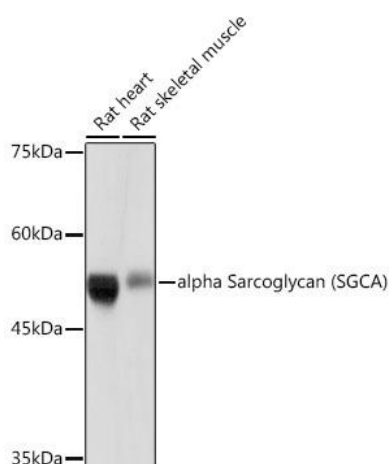
Positive Sample: Rat heart, Rat skeletal muscle

Recommended Dilutions:

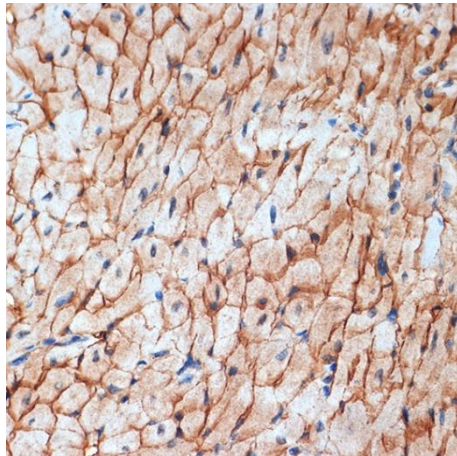
WB	1:500 - 1:3000
IF-P	1:100 - 1:1000
IHC-P	1:200 - 1:800
ELISA	Recommended starting concentration is 1 µg/mL. Please optimize the concentration based on your specific assay requirements.

Protein Quantification (Optional): To quantify total protein levels, use the Bradford Reagent included in this kit. Visit <https://www.assaygenie.com/bradford-protein-assay-protocol/> to view the full protocol

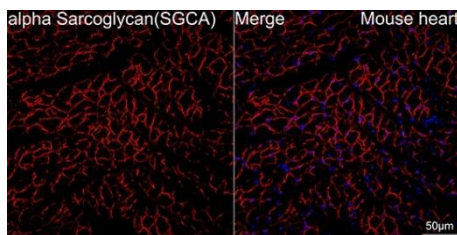
Validation Data



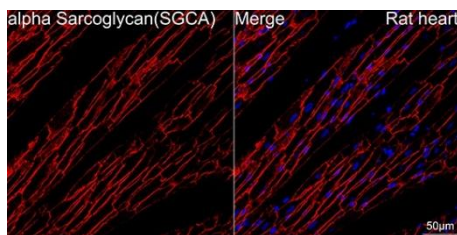
Western blot analysis of various lysates using alpha Sarcoglycan (SGCA) (SGCA) Rabbit mAb (CAB19754) at 1:500 dilution. Secondary antibody: HRP-conjugated Goat anti-Rabbit IgG (H+L) (CABS014) at 1:10000 dilution. Lysates/proteins: 25µg per lane. Blocking buffer: 3% nonfat dry milk in TBST. Detection: ECL Basic Kit (AbGn00020). Exposure time: 10s.



Immunohistochemistry analysis of paraffin-embedded Mouse heart using alpha Sarcoglycan (SGCA) (SGCA) Rabbit mAb (CAB19754) at dilution of 1:100 (40x lens). Microwave antigen retrieval performed with 0.01M Tris/EDTA Buffer (pH 9.0) prior to IHC staining.



Confocal imaging of paraffin-embedded Mouse heart using alpha Sarcoglycan (SGCA) Rabbit mAb (CAB19754,dilution 1:100) followed by a further incubation with Cy3 Goat Anti-Rabbit IgG (H+L) (CABS007, dilution 1:500) (Red). DAPI was used for nuclear staining (Blue). Objective: 40x. Perform high pressure antigen retrieval with 0.01 M citrate buffer (pH 6.0) prior to IF staining.



Confocal imaging of paraffin-embedded Rat heart using alpha Sarcoglycan (SGCA) Rabbit mAb (CAB19754,dilution 1:100) followed by a further incubation with Cy3 Goat Anti-Rabbit IgG (H+L) (CABS007, dilution 1:500) (Red). DAPI was used for nuclear staining (Blue). Objective: 40x. Perform high pressure antigen retrieval with 0.01 M citrate buffer (pH 6.0) prior to IF staining.