

Histone H4 Monoclonal Antibody

CAB19815

Description

This Histone H4 Monoclonal Antibody is supplied as a kit for advanced applications. The kit includes Bradford Reagent to quantify total protein concentration for accurate sample normalization (Optional).

Product Information

| | |
|----------------------|---|
| SKU: | CAB19815 |
| Contents: | 20 µL, 100 µL Bradford Reagent: 1 vial (2ml) |
| Category: | Monoclonal Antibody |
| Synonyms: | H4/p, H4C1, H4C2, H4C3, H4C4, H4C5, H4C6, H4C8, H4C9, H4-16, H4C11, H4C12, H4C13, H4C14, H4C15, HIST4H4, Histone H4 |
| Clone: | ARC2340 |
| Applications: | WB IHC-P ELISA |
| Conjugation: | Unconjugated |
| Reactivity: | Human, Mouse, Rat, Other (Wide Range Predicted) |

Antibody Data

| | |
|-----------------------|-----------------------|
| Gene ID: | 8359 |
| Uniprot: | - |
| Host Species: | Rabbit |
| Purification: | Affinity purification |
| Observed MW: | 11kDa |
| Calculated MW: | 11kDa |

Preparation & Storage

Storage: Store at -20°C. Avoid freeze / thaw cycles. Buffer: PBS containing 50% glycerol and 0.05% BSA, preserved with proclin300 or sodium azide (as specified on the Certificate of Analysis), pH 7.3.

Store Bradford Reagent at Room Temperature for 1 Year.

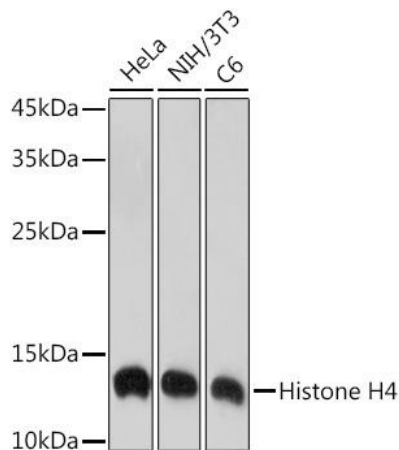
Positive Sample: HeLa, NIH/3T3, C6

Recommended Dilutions:

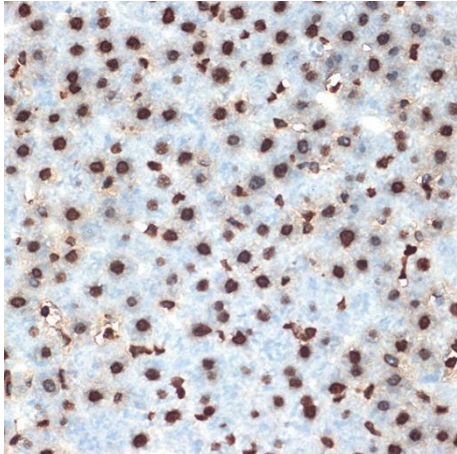
| | |
|--------------|---|
| WB | 1:1000 - 1:6000 |
| IHC-P | 1:100 - 1:1000 |
| ELISA | Recommended starting concentration is 1 µg/mL. Please optimize the concentration based on your specific assay requirements. |

Protein Quantification (Optional): To quantify total protein levels, use the Bradford Reagent included in this kit. Visit <https://www.assaygenie.com/bradford-protein-assay-protocol/> to view the full protocol

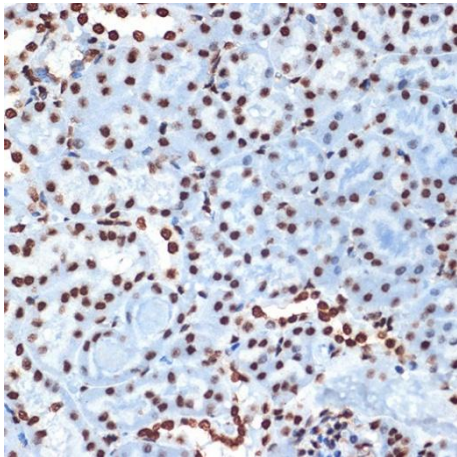
Validation Data



Western blot analysis of various lysates using Histone Rabbit mAb (CAB19815) at 1:1000 dilution. Secondary antibody: HRP-conjugated Goat anti-Rabbit IgG (H+L) (CABS014) at 1:10000 dilution. Lysates/proteins: 25µg per lane. Blocking buffer: 3% nonfat dry milk in TBST. Detection: ECL Enhanced Kit (AbGn00021). Exposure time: 10s.



Immunohistochemistry analysis of paraffin-embedded Rat liver using Histone Rabbit mAb (CAB19815) at dilution of 1:100 (40x lens). Microwave antigen retrieval performed with 0.01M Tris/EDTA Buffer (pH 9.0) prior to IHC staining.



Immunohistochemistry analysis of paraffin-embedded Mouse kidney using Histone Rabbit mAb (CAB19815) at dilution of 1:100 (40x lens). Microwave antigen retrieval performed with 0.01M Tris/EDTA Buffer (pH 9.0) prior to IHC staining.