

Ceruloplasmin Monoclonal Antibody

CAB20229

Description

This Ceruloplasmin Monoclonal Antibody is supplied as a kit for advanced applications. The kit includes Bradford Reagent to quantify total protein concentration for accurate sample normalization (Optional).

Product Information

| | |
|----------------------|---|
| SKU: | CAB20229 |
| Contents: | 20 μ L, 100 μ L Bradford Reagent: 1 vial (2ml) |
| Category: | Monoclonal Antibody |
| Synonyms: | CP-2, AB073614, Ceruloplasmin |
| Clone: | ARC5018-06 |
| Applications: | WB IHC-P ELISA IF-P |
| Conjugation: | Unconjugated |
| Reactivity: | Human, Mouse, Rat |

Antibody Data

| | |
|-----------------------|-----------------------|
| Gene ID: | 1356 |
| Uniprot: | - |
| Host Species: | Rabbit |
| Purification: | Affinity purification |
| Observed MW: | 140kDa |
| Calculated MW: | 122kDa |

Preparation & Storage

Storage: Store at -20°C. Avoid freeze / thaw cycles. Buffer: PBS containing 50% glycerol and 0.05% BSA, preserved with proclin300 or sodium azide (as specified on the Certificate of Analysis), pH 7.3.

Store Bradford Reagent at Room Temperature for 1 Year.

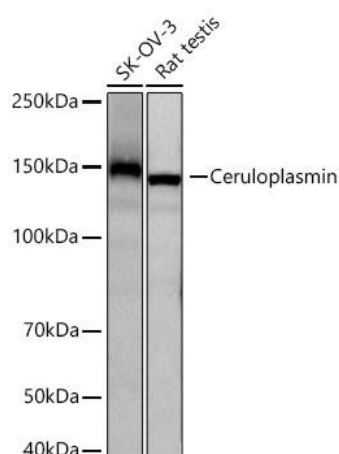
Positive Sample: SK-OV-3, Rat testis

Recommended Dilutions:

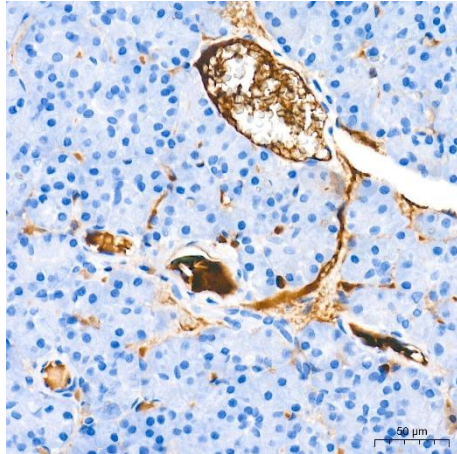
| | |
|--------------|---|
| WB | 1:1000 - 1:2000 |
| IF-P | 1:50 - 1:200 |
| IHC-P | 1:5000 - 1:20000 |
| ELISA | Recommended starting concentration is 1 µg/mL. Please optimize the concentration based on your specific assay requirements. |

Protein Quantification (Optional): To quantify total protein levels, use the Bradford Reagent included in this kit. Visit <https://www.assaygenie.com/bradford-protein-assay-protocol/> to view the full protocol

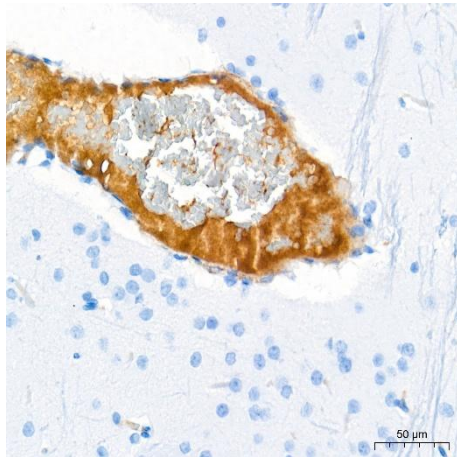
Validation Data



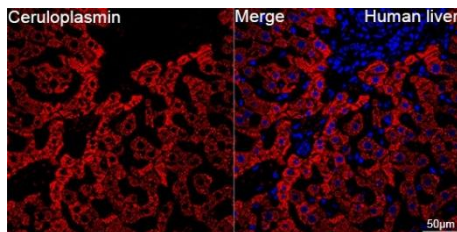
Western blot analysis of various lysates using Ceruloplasmin Rabbit mAb (CAB20229) at 1:1000 dilution incubated overnight at 4°C. Secondary antibody: HRP-conjugated Goat anti-Rabbit IgG (H+L) (CABS014) at 1:10000 dilution. Lysates/proteins: 25 µg per lane. Blocking buffer: 3% nonfat dry milk in TBST. Detection: ECL Basic Kit (AbGn00020). Exposure time: 20s.



Immunohistochemistry analysis of paraffin-embedded Human pancreas tissue using Ceruloplasmin Rabbit mAb (CAB20229) at a dilution of 1:10000 (40x lens). High pressure antigen retrieval performed with 0.01M Tris-EDTA Buffer (pH 9.0) prior to IHC staining.



Immunohistochemistry analysis of paraffin-embedded Rat brain tissue using Ceruloplasmin Rabbit mAb (CAB20229) at a dilution of 1:10000 (40x lens). High pressure antigen retrieval performed with 0.01M Tris-EDTA Buffer (pH 9.0) prior to IHC staining.



Confocal imaging of paraffin-embedded Human liver tissue using Ceruloplasmin Rabbit mAb (CAB20229, dilution 1:200) followed by a further incubation with Cy3 Goat Anti-Rabbit IgG (H+L) (CABS007, dilution 1:500) (Red). DAPI was used for nuclear staining (Blue). High pressure antigen retrieval performed with 0.01M Citrate Buffer (pH 6.0) prior to IF staining. Objective: 40x.