

SARS-CoV-2 NSP10 Antibody

CAB20325

Description

This SARS-CoV-2 NSP10 Antibody is supplied as a kit for advanced applications. The kit includes Bradford Reagent to quantify total protein concentration for accurate sample normalization (Optional).

Product Information

SKU:	CAB20325
Contents:	20 μ L, 100 μ L Bradford Reagent: 1 vial (2ml)
Category:	Polyclonal Antibody
Synonyms:	-
Clone:	-
Applications:	WB IP ELISA
Conjugation:	-
Reactivity:	SARS-CoV-2

Antibody Data

Gene ID:	43740578
Uniprot:	-
Host Species:	Rabbit
Purification:	Affinity purification
Observed MW:	20-25kDa/
Calculated MW:	794kDa

Preparation & Storage

Storage: Store at -20°C. Avoid freeze / thaw cycles. Buffer: PBS containing 50% glycerol, preserved with proclin300 or sodium azide (as specified on the Certificate of Analysis), pH 7.3.

Store Bradford Reagent at Room Temperature for 1 Year.

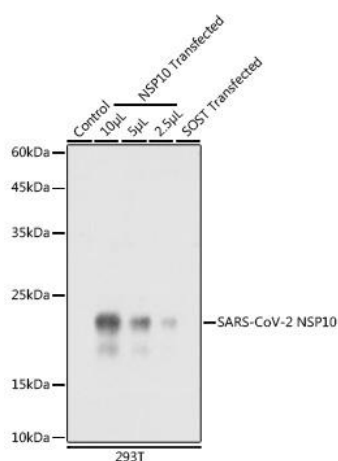
Positive Sample: 293T,

Recommended Dilutions:

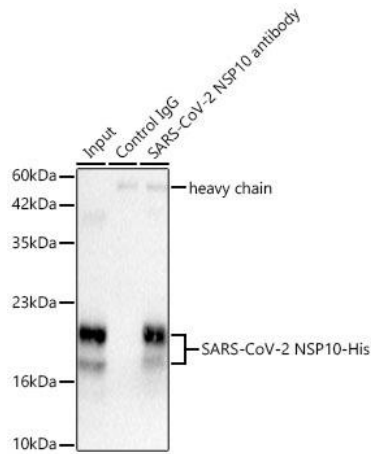
WB	1:2000 - 1:10000
IP	0.5µg-4µg antibody for 200µg-600µg extracts of whole cells
ELISA	Recommended starting concentration is 1 µg/mL. Please optimize the concentration based on your specific assay requirements.

Protein Quantification (Optional): To quantify total protein levels, use the Bradford Reagent included in this kit. Visit <https://www.assaygenie.com/bradford-protein-assay-protocol/> to view the full protocol

Validation Data



Western blot analysis of extracts of normal 293T cells, 293T transfected with Protein and 293T transfected with SOST Protein, using SARS-CoV-2 Rabbit pAb (CAB20325) at 1:10000 dilution. Secondary antibody: HRP-conjugated Goat anti-Rabbit IgG (H+L) (CABS014) at 1:10000 dilution. Lysates/proteins: 25µg per lane. Blocking buffer: 3% nonfat dry milk in TBST. Detection: ECL Basic Kit (AbGn00020). Exposure time: 1s.



Immunoprecipitation of SARS-CoV-2 from 300 µg extracts of 293T cells transfected with SARS-CoV-2 was performed using 2 µg of SARS-CoV-2 Rabbit pAb (CAB20325). Rabbit IgG isotype control(CABC042) was used to precipitate the Control IgG sample. IP samples were eluted with 1X Laemmli Buffer. The Input lane represents 10 % of the total input. Western blot analysis of immunoprecipitates was conducted using SARS-CoV-2 Rabbit pAb (CAB20325) at a dilution of 1:4000.