

FACL4 Monoclonal Antibody

CAB20414

Description

This FACL4 Monoclonal Antibody is supplied as a kit for advanced applications. The kit includes Bradford Reagent to quantify total protein concentration for accurate sample normalization (Optional).

Product Information

SKU:	CAB20414
Contents:	20 μ L, 100 μ L Bradford Reagent: 1 vial (2ml)
Category:	Monoclonal Antibody
Synonyms:	ACS4, FACL4, LACS4, MRX63, MRX68, XLID63, ACSL4
Clone:	ARC53209
Applications:	WB IF/ICC IP ELISA
Conjugation:	Unconjugated
Reactivity:	Human, Mouse, Rat

Antibody Data

Gene ID:	2182
Uniprot:	AB_2909505
Host Species:	Rabbit
Purification:	Affinity purification
Observed MW:	79kDa
Calculated MW:	79kDa

Preparation & Storage

Storage: Store at -20°C. Avoid freeze / thaw cycles. Buffer: PBS with 0.09% sodium azide, 0.05% BSA, 50% glycerol, pH 7.3.

Store Bradford Reagent at Room Temperature for 1 Year.

Positive Sample: Hep G2, Mouse liver, Rat liver, Mouse kidney

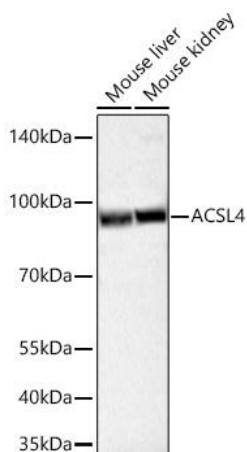
Recommended Dilutions:

WB	1:10000 - 1:60000
IF/ICC	1:200 - 1:800
IP	0.5µg-4µg antibody for 200µg-400µg extracts of whole cells
ELISA	Recommended starting concentration is 1 µg/mL. Please optimize the concentration based on your specific assay requirements.

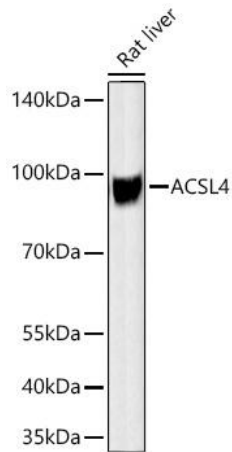
Protein Quantification (Optional):

To quantify total protein levels, use the Bradford Reagent included in this kit. Visit <https://www.assaygenie.com/bradford-protein-assay-protocol/> to view the full protocol

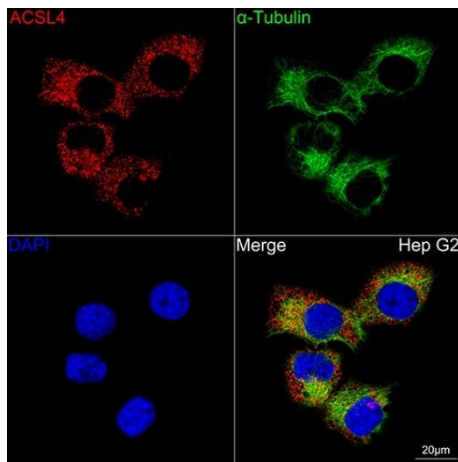
Validation Data



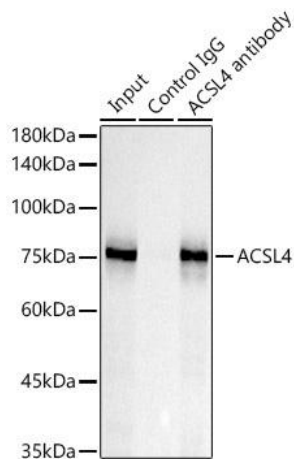
Western blot analysis of various lysates using ACSL4 Rabbit mAb (CAB20414) at 1:58000 dilution incubated overnight at 4°C. Secondary antibody: HRP-conjugated Goat anti-Rabbit IgG (H+L) (CABS014) at 1:10000 dilution. Lysates/proteins: 25 µg per lane. Blocking buffer: 3% nonfat dry milk in TBST. Detection: ECL Basic Kit (AbGn00020). Exposure time: 45s.



Western blot analysis of lysates from Rat liver using ACSL4 Rabbit mAb (CAB20414) at 1:58000 dilution incubated overnight at 4°C. Secondary antibody: HRP-conjugated Goat anti-Rabbit IgG (H+L) (CABS014) at 1:10000 dilution. Lysates/proteins: 25 µg per lane. Blocking buffer: 3% nonfat dry milk in TBST. Detection: ECL Basic Kit (AbGn00020). Exposure time: 20s.



Confocal imaging of Hep cells using ACSL4 Rabbit mAb (CAB20414, dilution 1:200) followed by a further incubation with Cy3 Goat Anti-Rabbit IgG (H+L) (CABS007, dilution 1:500) (Red). The cells were counterstained with α-Tubulin Mouse mAb (CABC012, dilution 1:400) followed by incubation with ABflo® 488-conjugated Goat Anti-Mouse IgG (H+L) Ab (, dilution 1:500) (Green). DAPI was used for nuclear staining (Blue). Objective: 100x.



Immunoprecipitation analysis of 300 µg extracts of HepG2 cells using 3 µg ACSL4 Rabbit mAb (CAB20414). Western blot was performed from the immunoprecipitate using ACSL4 Rabbit mAb (CAB20414) at a dilution of 1:1000.