

## CD69 Antibody

CAB2045

### Description

---

This CD69 Antibody is supplied as a kit for advanced applications. The kit includes Bradford Reagent to quantify total protein concentration for accurate sample normalization (Optional).

### Product Information

---

|                      |                                                   |
|----------------------|---------------------------------------------------|
| <b>SKU:</b>          | CAB2045                                           |
| <b>Contents:</b>     | 20 µL, 100 µL<br>Bradford Reagent: 1 vial (2ml)   |
| <b>Category:</b>     | Polyclonal Antibody                               |
| <b>Synonyms:</b>     | AIM, EA1, MLR-3, CLEC2C, GP32/28, BL-AC/P26, CD69 |
| <b>Clone:</b>        | -                                                 |
| <b>Applications:</b> | <span>WB</span> <span>ELISA</span>                |
| <b>Conjugation:</b>  | Unconjugated                                      |
| <b>Reactivity:</b>   | Human, Mouse, Rat                                 |

### Antibody Data

---

|                       |                       |
|-----------------------|-----------------------|
| <b>Gene ID:</b>       | 969                   |
| <b>Uniprot:</b>       | AB_2764069            |
| <b>Host Species:</b>  | Rabbit                |
| <b>Purification:</b>  | Affinity purification |
| <b>Observed MW:</b>   | 25-45kDa              |
| <b>Calculated MW:</b> | 23kDa                 |

## Preparation & Storage

**Storage:** Store at -20°C. Avoid freeze / thaw cycles. Buffer: PBS containing 50% glycerol, preserved with proclin300 or sodium azide (as specified on the Certificate of Analysis), pH 7.3.

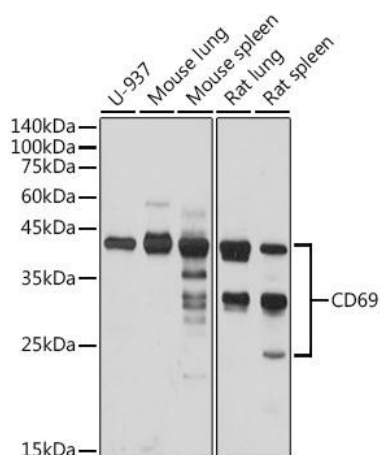
Store Bradford Reagent at Room Temperature for 1 Year.

**Positive Sample:** U-937, Mouse lung, Mouse spleen, Rat lung, Rat spleen

|                               |              |                                                                                                                             |
|-------------------------------|--------------|-----------------------------------------------------------------------------------------------------------------------------|
| <b>Recommended Dilutions:</b> | <b>WB</b>    | 1:500 - 1:1000                                                                                                              |
|                               | <b>ELISA</b> | Recommended starting concentration is 1 µg/mL. Please optimize the concentration based on your specific assay requirements. |

**Protein Quantification (Optional):** To quantify total protein levels, use the Bradford Reagent included in this kit. Visit <https://www.assaygenie.com/bradford-protein-assay-protocol/> to view the full protocol

## Validation Data



Western blot analysis of various lysates using Rabbit pAb (CAB2045) at 1:1000 dilution. Secondary antibody: HRP-conjugated Goat anti-Rabbit IgG (H+L) (CABS014) at 1:10000 dilution. Lysates/proteins: 25µg per lane. Blocking buffer: 3% nonfat dry milk in TBST. Detection: ECL Basic Kit (AbGn00020). Exposure time: 10s.