

HCoV-HKU1 Spike S1 Antibody

CAB20613

Description

This HCoV-HKU1 Spike S1 Antibody is supplied as a kit for advanced applications. The kit includes Bradford Reagent to quantify total protein concentration for accurate sample normalization (Optional).

Product Information

SKU:	CAB20613
Contents:	20 μ L, 100 μ L Bradford Reagent: 1 vial (2ml)
Category:	Polyclonal Antibody
Synonyms:	-
Clone:	-
Applications:	WB ELISA
Conjugation:	Unconjugated
Reactivity:	HCoV-HKU1

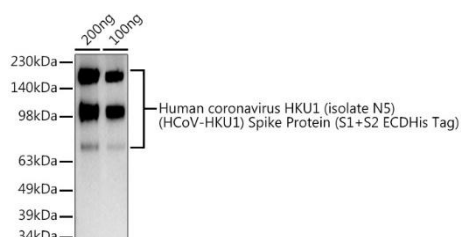
Antibody Data

Gene ID:	3200426
Uniprot:	-
Host Species:	Rabbit
Purification:	Affinity purification
Observed MW:	75kDa/110kDa/145kDa
Calculated MW:	152kDa

Preparation & Storage

Storage:	Store at -20°C. Avoid freeze / thaw cycles. Buffer: PBS containing 50% glycerol, preserved with proclin300 or sodium azide (as specified on the Certificate of Analysis), pH 7.3. Store Bradford Reagent at Room Temperature for 1 Year.				
Positive Sample:	Human coronavirus HKU1 (isolate N5) (HCoV-HKU1) Spike Protein (S1+S2 ECDHis Tag)				
Recommended Dilutions:	<table border="1"> <tr> <td>WB</td><td>1:100 - 1:500</td></tr> <tr> <td>ELISA</td><td>Recommended starting concentration is 1 µg/mL. Please optimize the concentration based on your specific assay requirements.</td></tr> </table>	WB	1:100 - 1:500	ELISA	Recommended starting concentration is 1 µg/mL. Please optimize the concentration based on your specific assay requirements.
WB	1:100 - 1:500				
ELISA	Recommended starting concentration is 1 µg/mL. Please optimize the concentration based on your specific assay requirements.				
Protein Quantification (Optional):	To quantify total protein levels, use the Bradford Reagent included in this kit. Visit https://www.assaygenie.com/bradford-protein-assay-protocol/ to view the full protocol				

Validation Data



Western blot analysis of lysates from Human coronavirus (isolate N5) (HCoV-) Spike Protein (+ ECDHis Tag), using HCoV- Spike Rabbit pAb (CAB20613) at 1:500 dilution. Secondary antibody: HRP-conjugated Goat anti-Rabbit IgG (H+L) (CABS014) at 1:10000 dilution. Lysates/proteins: 25µg per lane. Blocking buffer: 3% nonfat dry milk in TBST. Detection: ECL Basic Kit (AbGn00020). Exposure time: 180s.