

Fluorescein FITC Monoclonal Antibody

CAB20797

Description

This Fluorescein FITC Monoclonal Antibody is supplied as a kit for advanced applications. The kit includes Bradford Reagent to quantify total protein concentration for accurate sample normalization (Optional).

Product Information

SKU:	CAB20797
Contents:	20 μ L, 100 μ L Bradford Reagent: 1 vial (2ml)
Category:	Monoclonal Antibody
Synonyms:	-
Clone:	ARC51071
Applications:	WB ELISA
Conjugation:	Unconjugated
Reactivity:	Species independent

Antibody Data

Gene ID:	-
Uniprot:	-
Host Species:	Rabbit
Purification:	Affinity purification
Observed MW:	25kDa/55kDa
Calculated MW:	-

Preparation & Storage

Storage: Store at -20°C. Avoid freeze / thaw cycles. Buffer: PBS containing 50% glycerol and 0.05% BSA, preserved with proclin300 or sodium azide (as specified on the Certificate of Analysis), pH 7.3.

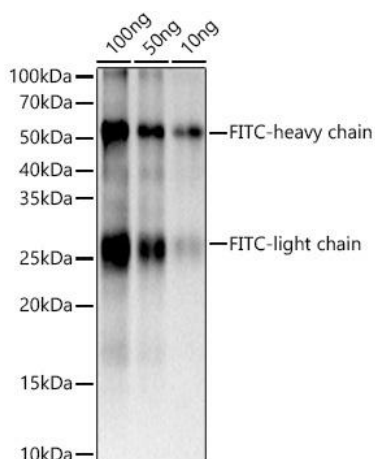
Store Bradford Reagent at Room Temperature for 1 Year.

Positive Sample: -

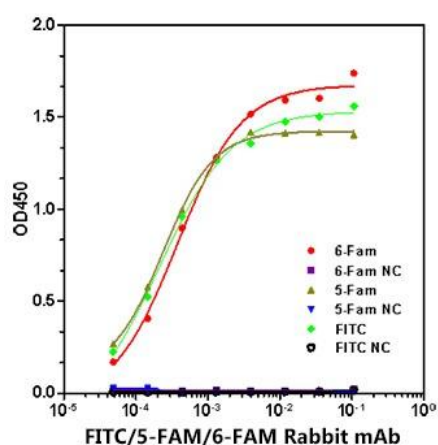
Recommended Dilutions:	WB	1:2000 - 1:12000
	ELISA	1:500 - 1:2000

Protein Quantification (Optional): To quantify total protein levels, use the Bradford Reagent included in this kit. Visit <https://www.assaygenie.com/bradford-protein-assay-protocol/> to view the full protocol

Validation Data



Western blot analysis of recombinant FITC-conjugated goat IgG protein using FITC/5-FAM/6-FAM Rabbit mAb (CAB20797) at 1:10000 dilution. Secondary antibody: HRP-conjugated Goat anti-Rabbit IgG (H+L) (CABS014) at 1:10000 dilution. Lysates/proteins: 100 ng/50 ng/10 ng per lane. Blocking buffer: 3% nonfat dry milk in TBST. Detection: ECL Basic Kit (AbGn00020). Exposure time: 1s.



Immobilized biotin-6 Fam, biotin-5 Fam, biotin-FITC, at 1 µg/mL (25 µl/well), of which ranges are 0.27-0.54 ng/mL, 0.18-0.31 ng/mL and 0.12-0.39 ng/mL, can bind anti 6-Fam/ 5-Fam/ FITC mAb (CAB20797), respectively.