

Mras Monoclonal Antibody

CAB20958

Description

This Mras Monoclonal Antibody is supplied as a kit for advanced applications. The kit includes Bradford Reagent to quantify total protein concentration for accurate sample normalization (Optional).

Product Information

| | |
|----------------------|---|
| SKU: | CAB20958 |
| Contents: | 20 μ L, 100 μ L Bradford Reagent: 1 vial (2ml) |
| Category: | Monoclonal Antibody |
| Synonyms: | NS11, M-RAs, RRAS3, R-RAS3, Mras |
| Clone: | ARC2946 |
| Applications: | WB ELISA |
| Conjugation: | Unconjugated |
| Reactivity: | Human, Mouse, Rat |

Antibody Data

| | |
|-----------------------|-----------------------|
| Gene ID: | 22808 |
| Uniprot: | - |
| Host Species: | Rabbit |
| Purification: | Affinity purification |
| Observed MW: | 24kDa |
| Calculated MW: | 24kDa |

Preparation & Storage

Storage: Store at -20°C. Avoid freeze / thaw cycles. Buffer: PBS containing 50% glycerol and 0.05% BSA, preserved with proclin300 or sodium azide (as specified on the Certificate of Analysis), pH 7.3.

Store Bradford Reagent at Room Temperature for 1 Year.

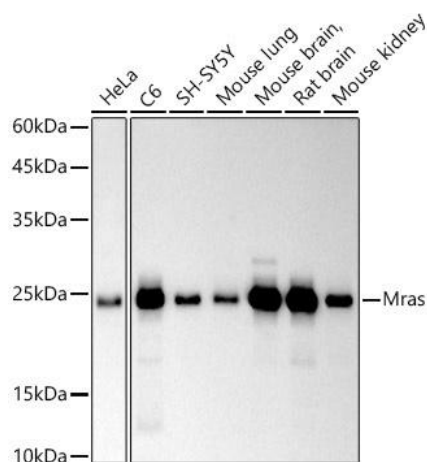
Positive Sample: HeLa, C6, SH-SY5Y, Mouse lung, Mouse brain, Rat brain, Mouse kidney

Recommended Dilutions:

| | |
|--------------|---|
| WB | 1:100 - 1:500 |
| ELISA | Recommended starting concentration is 1 µg/mL. Please optimize the concentration based on your specific assay requirements. |

Protein Quantification (Optional): To quantify total protein levels, use the Bradford Reagent included in this kit. Visit <https://www.assaygenie.com/bradford-protein-assay-protocol/> to view the full protocol

Validation Data



Western blot analysis of various lysates using Mras Rabbit mAb (CAB20958) at 1:500 dilution incubated overnight at 4°C. Secondary antibody: HRP-conjugated Goat anti-Rabbit IgG (H+L) (CABS014) at 1:10000 dilution. Lysates/proteins: 25 µg per lane. Blocking buffer: 3% nonfat dry milk in TBST. Detection: ECL Basic Kit (AbGn00020). Exposure time: 90 s.