

Phospho-POLR2A CTD-T4 Polyclonal Antibody

CAB21190

Description

This Phospho-POLR2A CTD-T4 Polyclonal Antibody is supplied as a kit for advanced applications. The kit includes Bradford Reagent to quantify total protein concentration for accurate sample normalization (Optional).

Product Information

SKU:	CAB21190
Contents:	20 μ L, 100 μ L Bradford Reagent: 1 vial (2ml)
Category:	Polyclonal Antibody
Synonyms:	RPB1, RPO2, POLR2, POLRA, RPBh1, RPOL2, NEDHIB, RplILS, hsRPB1, hRPB220, Phospho-POLR2A CTD-T4
Clone:	-
Applications:	WB IP ChIP ELISA
Conjugation:	Unconjugated
Reactivity:	Human, Mouse, Rat

Antibody Data

Gene ID:	5430
Uniprot:	-
Host Species:	Rabbit
Purification:	Affinity purification
Observed MW:	250kDa
Calculated MW:	217kDa

Preparation & Storage

Storage: Store at -20°C. Avoid freeze / thaw cycles. Buffer: PBS containing 50% glycerol, preserved with proclin300 or sodium azide (as specified on the Certificate of Analysis), pH 7.3.

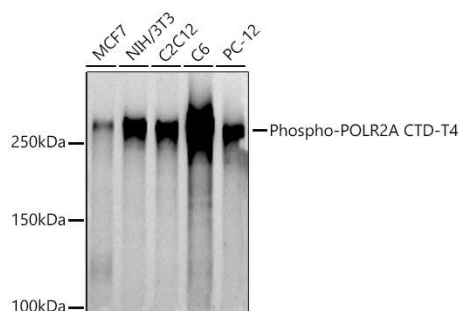
Store Bradford Reagent at Room Temperature for 1 Year.

Positive Sample: MCF7, NIH/3T3, C2C12, C6, PC-12

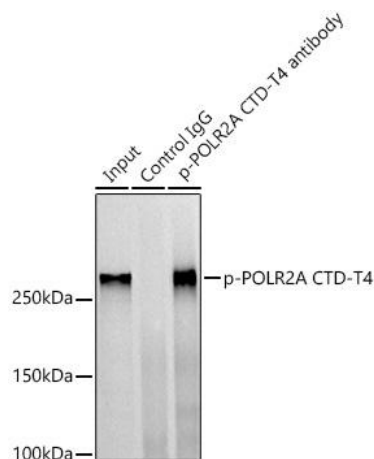
Recommended Dilutions:	WB	1:500 - 1:1000
	IP	0.5µg-4µg antibody for 200µg-400µg extracts of whole cells
	ELISA	Recommended starting concentration is 1 µg/mL. Please optimize the concentration based on your specific assay requirements. ChIP 5µg antibody for 10µg-15µg of Chromatin

Protein Quantification (Optional): To quantify total protein levels, use the Bradford Reagent included in this kit. Visit <https://www.assaygenie.com/bradford-protein-assay-protocol/> to view the full protocol

Validation Data



Western blot analysis of various lysates using Phospho-POLR2A CTD- Rabbit pAb (CAB21190) at 1:1000 dilution. Secondary antibody: HRP-conjugated Goat anti-Rabbit IgG (H+L) (CABS014) at 1:10000 dilution. Lysates/proteins: 25µg per lane. Blocking buffer: 3% nonfat dry milk in TBST. Detection: ECL Basic Kit (AbGn00020). Exposure time: 90s.



Immunoprecipitation analysis of 300 µg extracts of cells using 3 µg Phospho-POLR2A CTD- antibody (CAB21190). Western blot was performed from the immunoprecipitate using Phospho-POLR2A (Thr4) antibody (CAB21190) at a dilution of 1:1000.