

IL18R1/IL-18 R alpha Monoclonal Antibody

CAB21208

Description

This IL18R1/IL-18 R alpha Monoclonal Antibody is supplied as a kit for advanced applications. The kit includes Bradford Reagent to quantify total protein concentration for accurate sample normalization (Optional).

Product Information

SKU:	CAB21208
Contents:	20 μ L, 100 μ L Bradford Reagent: 1 vial (2ml)
Category:	Monoclonal Antibody
Synonyms:	CD218a, IL18RA, IL1RRP, CDw218a, IL-1Rrp, IL-18Ralpha, IL18Ralpha2, IL-18R-alpha, IL18R1/IL-18 R alpha
Clone:	ARC52216
Applications:	WB ELISA
Conjugation:	Unconjugated
Reactivity:	Human

Antibody Data

Gene ID:	8809
Uniprot:	-
Host Species:	Rabbit
Purification:	Affinity purification
Observed MW:	95kDa (Recombinant Human IL18R1 Protein)
Calculated MW:	62kDa

Preparation & Storage

Storage: Store at -20°C. Avoid freeze / thaw cycles. Buffer: PBS containing 50% glycerol and 0.05% BSA, preserved with proclin300 or sodium azide (as specified on the Certificate of Analysis), pH 7.3.

Store Bradford Reagent at Room Temperature for 1 Year.

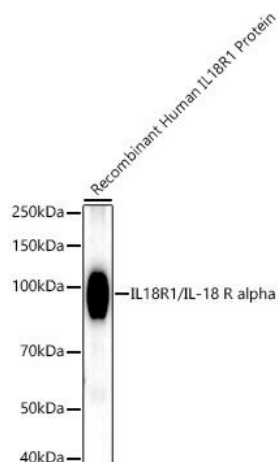
Positive Sample: Recombinant Human IL18R1 Protein

Recommended Dilutions:

WB	1:1000 - 1:5000
ELISA	Recommended starting concentration is 1 µg/mL. Please optimize the concentration based on your specific assay requirements.

Protein Quantification (Optional): To quantify total protein levels, use the Bradford Reagent included in this kit. Visit <https://www.assaygenie.com/bradford-protein-assay-protocol/> to view the full protocol

Validation Data



Western blot analysis of Recombinant Human IL-18R1/CD218a Protein, using IL18R1/IL-18 R alpha Rabbit mAb (CAB21208) at 1:1600 dilution. Secondary antibody: HRP-conjugated Goat anti-Rabbit IgG (H+L) (CABS014) at 1:10000 dilution. Lysates/proteins: 10ng per lane. Blocking buffer: 3% nonfat dry milk in TBST. Detection: ECL Basic Kit (AbGn00020). Exposure time: 30s.