

## CD13/ANPEP Monoclonal Antibody

CAB21268

### Description

---

This CD13/ANPEP Monoclonal Antibody is supplied as a kit for advanced applications. The kit includes Bradford Reagent to quantify total protein concentration for accurate sample normalization (Optional).

### Product Information

---

<b>SKU:</b>	CAB21268
<b>Contents:</b>	20 $\mu$ L, 100 $\mu$ L Bradford Reagent: 1 vial (2ml)
<b>Category:</b>	Monoclonal Antibody
<b>Synonyms:</b>	APN, AP-M, AP-N, CD13, LAP1, P150, PEPN, hAPN, GP150, CD13/ANPEP
<b>Clone:</b>	ARC53706
<b>Applications:</b>	<span>WB</span> <span>IHC-P</span> <span>FC</span> <span>ELISA</span>
<b>Conjugation:</b>	Unconjugated
<b>Reactivity:</b>	Human

### Antibody Data

---

<b>Gene ID:</b>	290
<b>Uniprot:</b>	-
<b>Host Species:</b>	Rabbit
<b>Purification:</b>	Affinity purification
<b>Observed MW:</b>	160kDa
<b>Calculated MW:</b>	110kDa

## Preparation & Storage

**Storage:** Store at -20°C. Avoid freeze / thaw cycles. Buffer: PBS containing 50% glycerol and 0.05% BSA, preserved with proclin300 or sodium azide (as specified on the Certificate of Analysis), pH 7.3.

Store Bradford Reagent at Room Temperature for 1 Year.

**Positive Sample:** HeLa, THP-1

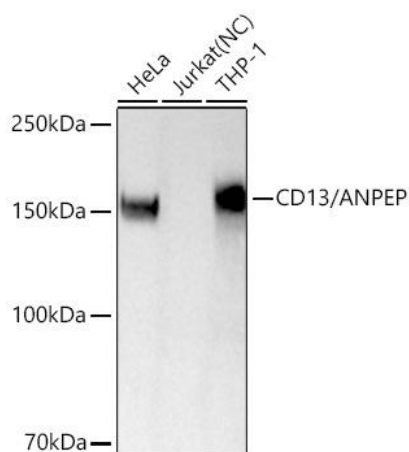
**Recommended Dilutions:**

<b>WB</b>	1:2000 - 1:10000
<b>IHC-P</b>	1:100 - 1:500
<b>FC</b>	1:50 - 1:200
<b>ELISA</b>	Recommended starting concentration is 1 µg/mL. Please optimize the concentration based on your specific assay requirements.

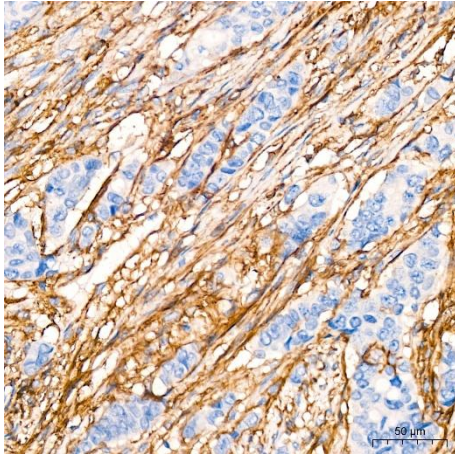
**Protein Quantification (Optional):**

To quantify total protein levels, use the Bradford Reagent included in this kit. Visit <https://www.assaygenie.com/bradford-protein-assay-protocol/> to view the full protocol

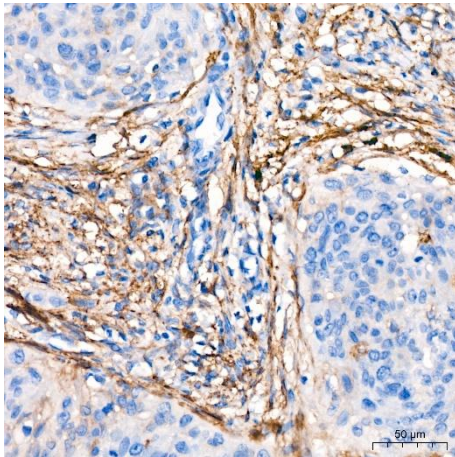
## Validation Data



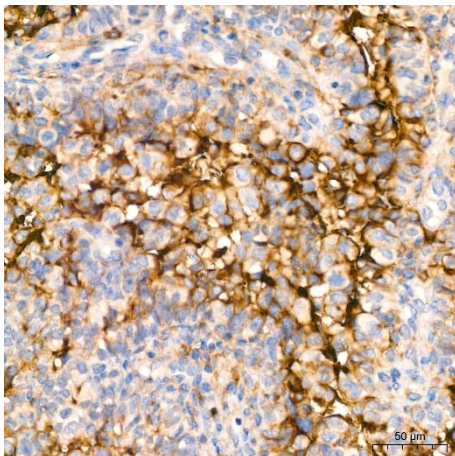
Western blot analysis of various lysates using ANPEP Rabbit mAb (CAB21268) at 1:5000 dilution. Secondary antibody: HRP-conjugated Goat anti-Rabbit IgG (H+L) (CABS014) at 1:10000 dilution. Lysates/proteins: 25 µg per lane. Blocking buffer: 3% nonfat dry milk in TBST. Detection: ECL Basic Kit (AbGn00020). Negative control (NC): Jurkat. Exposure time: 90 s.



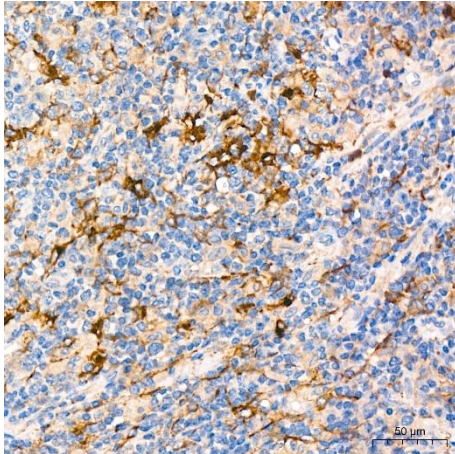
Immunohistochemistry analysis of paraffin-embedded Human breast cancer using /ANPEP Rabbit mAb (CAB21268) at dilution of 1:400 (40x lens). High pressure antigen retrieval performed with 0.01M Tris/EDTA Buffer (pH 9.0) prior to IHC staining.



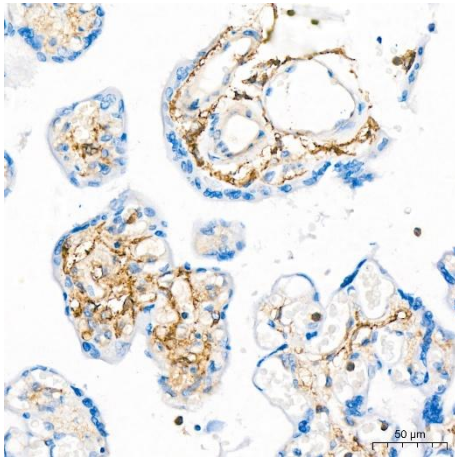
Immunohistochemistry analysis of paraffin-embedded Human cervical squamous cell carcinoma using /ANPEP Rabbit mAb (CAB21268) at dilution of 1:400 (40x lens). High pressure antigen retrieval performed with 0.01M Tris/EDTA Buffer (pH 9.0) prior to IHC staining.



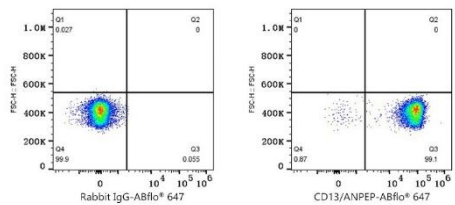
Immunohistochemistry analysis of paraffin-embedded Human colon carcinoma using /ANPEP Rabbit mAb (CAB21268) at dilution of 1:400 (40x lens). High pressure antigen retrieval performed with 0.01M Tris/EDTA Buffer (pH 9.0) prior to IHC staining.



Immunohistochemistry analysis of paraffin-embedded Human extranodal NK-T cell lymphoma using /ANPEP Rabbit mAb (CAB21268) at dilution of 1:400 (40x lens). High pressure antigen retrieval performed with 0.01M Tris/EDTA Buffer (pH 9.0) prior to IHC staining.



Immunohistochemistry analysis of paraffin-embedded Human placenta using /ANPEP Rabbit mAb (CAB21268) at dilution of 1:400 (40x lens). High pressure antigen retrieval performed with 0.01M Tris/EDTA Buffer (pH 9.0) prior to IHC staining.



Flow cytometry:  $1 \times 10^6$  Human PBMC were surface-stained with Rabbit IgG isotype control (CABC042, 2  $\mu\text{g/mL}$ , left) or /ANPEP Rabbit mAb (CAB21268, 2  $\mu\text{g/mL}$ , right), followed by Alexa Fluor® 647 conjugated goat anti-rabbit pAb staining. Cells in the monocyte gate were used for analysis.