

TIFY11B Polyclonal Antibody

CAB21305

Description

This TIFY11B Polyclonal Antibody is supplied as a kit for advanced applications. The kit includes Bradford Reagent to quantify total protein concentration for accurate sample normalization (Optional).

Product Information

SKU:	CAB21305
Contents:	20 μ L, 100 μ L Bradford Reagent: 1 vial (2ml)
Category:	Polyclonal Antibody
Synonyms:	jasmonate-zim-domain protein 6, T10D10.8, T10D10_8, TIFY DOMAIN PROTEIN 11B, TIFY11B
Clone:	-
Applications:	WB ELISA
Conjugation:	-
Reactivity:	Arabidopsis thaliana

Antibody Data

Gene ID:	843577
Uniprot:	-
Host Species:	Rabbit
Purification:	Affinity purification
Observed MW:	25kDa
Calculated MW:	30kDa

Preparation & Storage

Storage: Store at -20°C. Avoid freeze / thaw cycles. Buffer: PBS containing 50% glycerol, preserved with proclin300 or sodium azide (as specified on the Certificate of Analysis), pH 7.3.

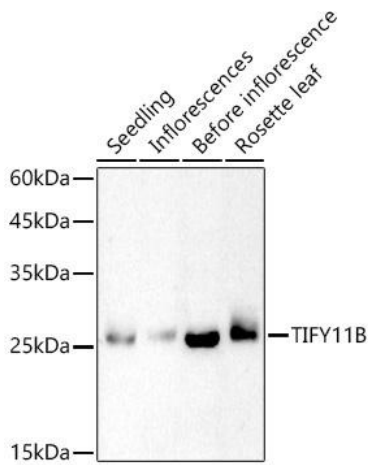
Store Bradford Reagent at Room Temperature for 1 Year.

Positive Sample: Seedling, Inflorescences, Before inflorescence, Rosette leaf

Recommended Dilutions:	WB	1:100 - 1:500
	ELISA	Recommended starting concentration is 1 µg/mL. Please optimize the concentration based on your specific assay requirements.

Protein Quantification (Optional): To quantify total protein levels, use the Bradford Reagent included in this kit. Visit <https://www.assaygenie.com/bradford-protein-assay-protocol/> to view the full protocol

Validation Data



Western blot analysis of extracts of various tissues from *Arabidopsis thaliana*, using TIFY11B Rabbit pAb (CAB21305) at 1:500 dilution. Secondary antibody: HRP-conjugated Goat anti-Rabbit IgG (H+L) (CABS014) at 1:10000 dilution. Lysates/proteins: 25µg per lane. Blocking buffer: 3% nonfat dry milk in TBST. Detection: ECL Basic Kit (AbGn00020). Exposure time: 180s.