

## CNPase Polyclonal Antibody

CAB21357

### Description

---

This CNPase Polyclonal Antibody is supplied as a kit for advanced applications. The kit includes Bradford Reagent to quantify total protein concentration for accurate sample normalization (Optional).

### Product Information

---

<b>SKU:</b>	CAB21357
<b>Contents:</b>	20 $\mu$ L, 100 $\mu$ L Bradford Reagent: 1 vial (2ml)
<b>Category:</b>	
<b>Synonyms:</b>	-
<b>Clone:</b>	-
<b>Applications:</b>	[App]
<b>Conjugation:</b>	-
<b>Reactivity:</b>	-

### Antibody Data

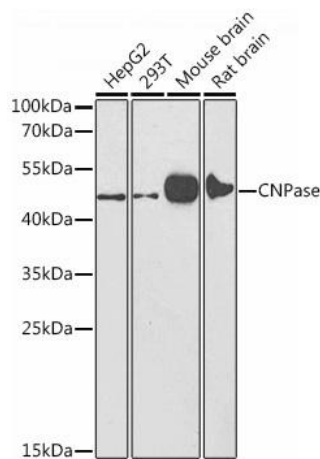
---

<b>Gene ID:</b>	-
<b>Uniprot:</b>	-
<b>Host Species:</b>	
<b>Purification:</b>	-
<b>Observed MW:</b>	-
<b>Calculated MW:</b>	-

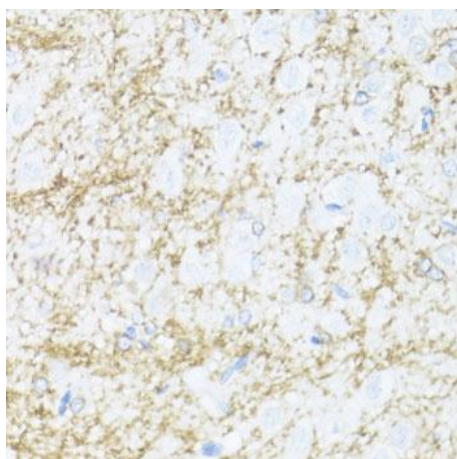
## Preparation & Storage

<b>Storage:</b>	- Store Bradford Reagent at Room Temperature for 1 Year.
<b>Positive Sample:</b>	-
<b>Recommended Dilutions:</b>	N/A
<b>Protein Quantification (Optional):</b>	To quantify total protein levels, use the Bradford Reagent included in this kit. Visit <a href="https://www.assaygenie.com/bradford-protein-assay-protocol/">https://www.assaygenie.com/bradford-protein-assay-protocol/</a> to view the full protocol

## Validation Data



Western blot analysis of various lysates using CNPase Rabbit pAb (CAB21357) at 1:1000 dilution. Secondary antibody: HRP-conjugated Goat anti-Rabbit IgG (H+L) (CABS014) at 1:10000 dilution. Lysates/proteins: 25µg per lane. Blocking buffer: 3% nonfat dry milk in TBST. Detection: ECL Enhanced Kit (AbGn00021). Exposure time: 15s.



Immunohistochemistry analysis of paraffin-embedded Rat brain using CNPase Rabbit pAb (CAB21357) at dilution of 1:100 (40x lens). Microwave antigen retrieval performed with 0.01M PBS Buffer (pH 7.2) prior to IHC staining.