

## Placental alkaline phosphatase (PLAP) Polyclonal Antibody

CAB21424

### Description

---

This Placental alkaline phosphatase (PLAP) Polyclonal Antibody is supplied as a kit for advanced applications. The kit includes Bradford Reagent to quantify total protein concentration for accurate sample normalization (Optional).

### Product Information

---

|                      |   |
|----------------------|---|
| <b>SKU:</b>          | CAB21424  |
| <b>Contents:</b>     | 20 $\mu$ L, 100 $\mu$ L<br>Bradford Reagent: 1 vial (2ml)                 |
| <b>Category:</b>     | Polyclonal Antibody   |
| <b>Synonyms:</b>     | ALP, IAP, ALPI, PALP, PLAP, PLAP-1, Placental alkaline phosphatase (PLAP) |
| <b>Clone:</b>        | -   |
| <b>Applications:</b> | <span>WB</span> <span>IP</span> <span>ELISA</span>                        |
| <b>Conjugation:</b>  | Unconjugated  |
| <b>Reactivity:</b>   | Human   |

### Antibody Data

---

|                       |                       |
|-----------------------|-----------------------|
| <b>Gene ID:</b>       | 250                   |
| <b>Uniprot:</b>       | -                     |
| <b>Host Species:</b>  | Rabbit                |
| <b>Purification:</b>  | Affinity purification |
| <b>Observed MW:</b>   | Refer to figures      |
| <b>Calculated MW:</b> | 58kDa                 |

## Preparation & Storage

**Storage:** Store at -20°C. Avoid freeze / thaw cycles. Buffer: PBS containing 50% glycerol, preserved with proclin300 or sodium azide (as specified on the Certificate of Analysis), pH 7.3.

Store Bradford Reagent at Room Temperature for 1 Year.

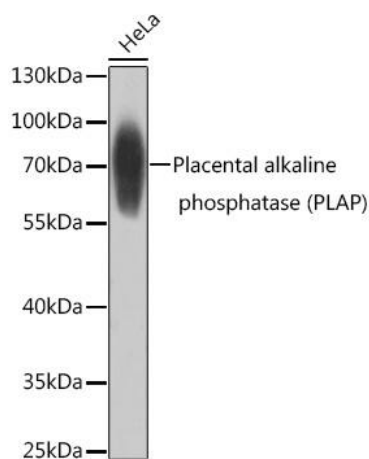
**Positive Sample:** HeLa

**Recommended Dilutions:**

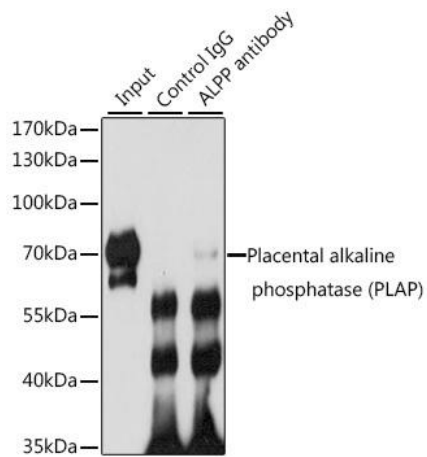
|              |   |
|--------------|---|
| <b>WB</b>    | 1:500 - 1:2000  |
| <b>IP</b>    | 0.5µg-4µg antibody for 200µg-400µg extracts of whole cells  |
| <b>ELISA</b> | Recommended starting concentration is 1 µg/mL. Please optimize the concentration based on your specific assay requirements. |

**Protein Quantification (Optional):** To quantify total protein levels, use the Bradford Reagent included in this kit. Visit <https://www.assaygenie.com/bradford-protein-assay-protocol/> to view the full protocol

## Validation Data



Western blot analysis of lysates from HeLa cells, using Placental alkaline phosphatase (PLAP) Rabbit pAb (CAB21424) at 1:1000 dilution. Secondary antibody: HRP-conjugated Goat anti-Rabbit IgG (H+L) (CABS014) at 1:10000 dilution. Lysates/proteins: 25µg per lane. Blocking buffer: 3% nonfat dry milk in TBST. Detection: ECL Basic Kit (AbGn00020). Exposure time: 1s.



Immunoprecipitation analysis of 200  $\mu$ g extracts of HeLa cells, using 3  $\mu$ g Placental alkaline phosphatase (PLAP) antibody (CAB21424). Western blot was performed from the immunoprecipitate using Placental alkaline phosphatase (PLAP) antibody (CAB21424) at a dilution of 1:1000.