

SHMT2 Polyclonal Antibody

CAB21803

Description

This SHMT2 Polyclonal Antibody is supplied as a kit for advanced applications. The kit includes Bradford Reagent to quantify total protein concentration for accurate sample normalization (Optional).

Product Information

SKU:	CAB21803
Contents:	20 μ L, 100 μ L Bradford Reagent: 1 vial (2ml)
Category:	Polyclonal Antibody
Synonyms:	GLYA, SHMT, mSHMT, NEDCASB, HEL-S-51e, SHMT2
Clone:	-
Applications:	WB IHC-P IF/ICC IP ELISA
Conjugation:	Unconjugated
Reactivity:	Human, Mouse, Rat

Antibody Data

Gene ID:	6472
Uniprot:	-
Host Species:	Rabbit
Purification:	Affinity purification
Observed MW:	56kDa
Calculated MW:	56kDa

Preparation & Storage

Storage: Store at -20°C. Avoid freeze / thaw cycles. Buffer: PBS with 0.09% Sodium azide, 50% glycerol, pH 7.3.

Store Bradford Reagent at Room Temperature for 1 Year.

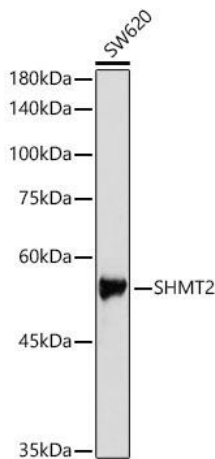
Positive Sample: SW620

Recommended Dilutions:

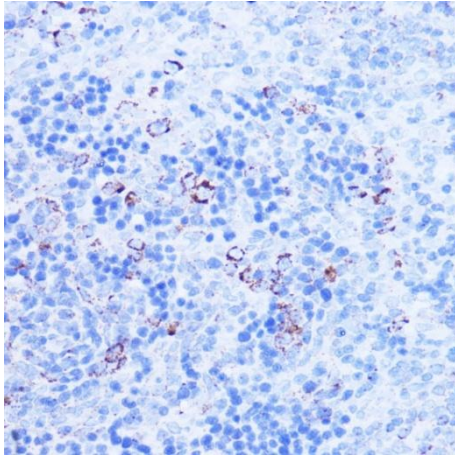
WB	1:500 - 1:1000
IHC-P	1:50 - 1:100
IF/ICC	1:50 - 1:200
IP	0.5µg-4µg antibody for 200µg-400µg extracts of whole cells
ELISA	Recommended starting concentration is 1 µg/mL. Please optimize the concentration based on your specific assay requirements.

Protein Quantification (Optional): To quantify total protein levels, use the Bradford Reagent included in this kit. Visit <https://www.assaygenie.com/bradford-protein-assay-protocol/> to view the full protocol

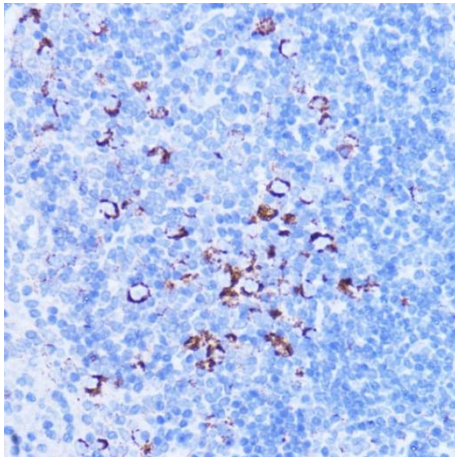
Validation Data



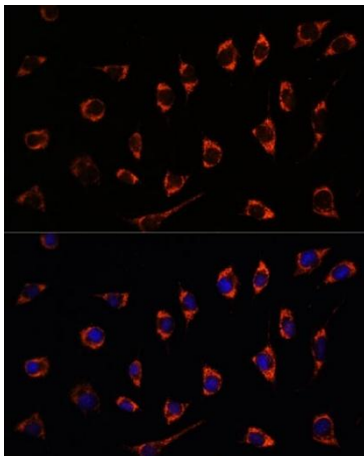
Western blot analysis of lysates from cells, using SHMT2 Rabbit pAb (CAB21803) at 1:1000 dilution. Secondary antibody: HRP-conjugated Goat anti-Rabbit IgG (H+L) (CABS014) at 1:10000 dilution. Lysates/proteins: 25µg per lane. Blocking buffer: 3% nonfat dry milk in TBST. Detection: ECL Basic Kit (AbGn00020). Exposure time: 1s.



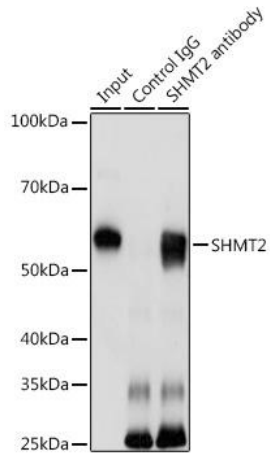
Immunohistochemistry analysis of paraffin-embedded Rat spleen using SHMT2 Rabbit pAb (CAB21803) at dilution of 1:100 (40x lens). Microwave antigen retrieval performed with 0.01M PBS Buffer (pH 7.2) prior to IHC staining.



Immunohistochemistry analysis of paraffin-embedded Mouse spleen using SHMT2 Rabbit pAb (CAB21803) at dilution of 1:100 (40x lens). Microwave antigen retrieval performed with 0.01M PBS Buffer (pH 7.2) prior to IHC staining.



Immunofluorescence analysis of cells using SHMT2 Rabbit pAb (CAB21803) at dilution of 1:100. Secondary antibody: Cy3-conjugated Goat anti-Rabbit IgG (H+L) (CABS007) at 1:500 dilution. Blue: DAPI for nuclear staining.



Immunoprecipitation analysis of 200 μ g extracts of HeLa cells using 3 μ g SHMT2 antibody (CAB21803). Western blot was performed from the immunoprecipitate using SHMT2 antibody (CAB21803) at a dilution of 1:1000.