

PDLIM5 Polyclonal Antibody

CAB22013

Description

This PDLIM5 Polyclonal Antibody is supplied as a kit for advanced applications. The kit includes Bradford Reagent to quantify total protein concentration for accurate sample normalization (Optional).

Product Information

| | |
|----------------------|---|
| SKU: | CAB22013 |
| Contents: | 20 µL, 100 µL Bradford Reagent: 1 vial (2ml) |
| Category: | Polyclonal Antibody |
| Synonyms: | L9, ENH, LIM, ENH1, PDLIM5 |
| Clone: | - |
| Applications: | WB ELISA |
| Conjugation: | Unconjugated |
| Reactivity: | Human |

Antibody Data

| | |
|-----------------------|-----------------------|
| Gene ID: | 10611 |
| Uniprot: | - |
| Host Species: | Rabbit |
| Purification: | Affinity purification |
| Observed MW: | 64kDa |
| Calculated MW: | 64kDa |

Preparation & Storage

Storage: Store at -20°C. Avoid freeze / thaw cycles. Buffer: PBS containing 50% glycerol, preserved with proclin300 or sodium azide (as specified on the Certificate of Analysis), pH 7.3.

Store Bradford Reagent at Room Temperature for 1 Year.

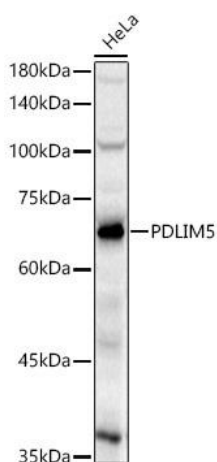
Positive Sample: HeLa

Recommended Dilutions:

| | |
|--------------|---|
| WB | 1:500 - 1:1000 |
| ELISA | Recommended starting concentration is 1 µg/mL. Please optimize the concentration based on your specific assay requirements. |

Protein Quantification (Optional): To quantify total protein levels, use the Bradford Reagent included in this kit. Visit <https://www.assaygenie.com/bradford-protein-assay-protocol/> to view the full protocol

Validation Data



Western blot analysis of lysates from HeLa cells, using PDLIM5 Rabbit pAb (CAB22013) at 1:400 dilution. Secondary antibody: HRP-conjugated Goat anti-Rabbit IgG (H+L) (CABS014) at 1:10000 dilution. Lysates/proteins: 25µg per lane. Blocking buffer: 3% nonfat dry milk in TBST. Detection: ECL Basic Kit (AbGn00020). Exposure time: 10s.