



TGF beta Receptor I (TGFB1) Monoclonal Antibody

CAB22151

Description

This TGF beta Receptor I (TGFB1) Monoclonal Antibody is supplied as a kit for advanced applications. The kit includes Bradford Reagent to quantify total protein concentration for accurate sample normalization (Optional).

Product Information

SKU:	CAB22151
Contents:	20 µL, 100 µL Bradford Reagent: 1 vial (2ml)
Category:	Monoclonal Antibody
Synonyms:	AAT5, ALK5, ESS1, LDS1, MSSE, SKR4, TBRI, ALK-5, LDS1A, LDS2A, TBR-i, TGFR-1, ACVRLK4, tbetaR-I, TGF beta Receptor I (TGFB1)
Clone:	ARC55592
Applications:	 
Conjugation:	-
Reactivity:	Human

Antibody Data

Gene ID:	7046
Uniprot:	-
Host Species:	Rabbit
Purification:	Affinity purification
Observed MW:	56kDa
Calculated MW:	56kDa

Preparation & Storage

Storage: Store at -20°C. Avoid freeze / thaw cycles. Buffer: PBS with 0.09% Sodium azide, 0.05% BSA, 50% glycerol, pH 7.3.

Store Bradford Reagent at Room Temperature for 1 Year.

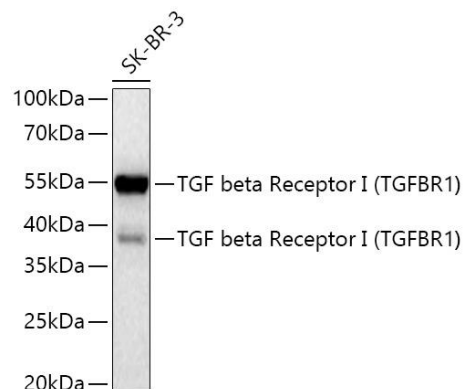
Positive Sample: SK-BR-3, U-87MG

Recommended Dilutions:

WB	1:2000 - 1:8000
ELISA	Recommended starting concentration is 1 µg/mL. Please optimize the concentration based on your specific assay requirements.

Protein Quantification (Optional): To quantify total protein levels, use the Bradford Reagent included in this kit. Visit <https://www.assaygenie.com/bradford-protein-assay-protocol/> to view the full protocol

Validation Data



Western blot analysis of lysates from SK-BR-3 cells using TGF beta Receptor I (TGFBRI) Rabbit mAb (CAB22151) at 1:5000 dilution incubated at room temperature for 1.5 hours. Secondary antibody: HRP-conjugated Goat anti-Rabbit IgG (H+L) (CABS014) at 1:10000 dilution. Lysates/proteins: 25 µg per lane. Blocking buffer: 3% nonfat dry milk in TBST. Detection: ECL Basic Kit (AbGn00020). Exposure time: 90 s.