

## TSG101/VPS23 Antibody

CAB2216

### Description

---

This TSG101/VPS23 Antibody is supplied as a kit for advanced applications. The kit includes Bradford Reagent to quantify total protein concentration for accurate sample normalization (Optional).

### Product Information

---

<b>SKU:</b>	CAB2216
<b>Contents:</b>	20 µL, 100 µL Bradford Reagent: 1 vial (2ml)
<b>Category:</b>	Polyclonal Antibody
<b>Synonyms:</b>	TSG10, VPS23, TSG101/VPS23
<b>Clone:</b>	-
<b>Applications:</b>	WB IF/ICC ELISA
<b>Conjugation:</b>	Unconjugated
<b>Reactivity:</b>	Human, Mouse, Rat

### Antibody Data

---

<b>Gene ID:</b>	7251
<b>Uniprot:</b>	AB_2764231
<b>Host Species:</b>	Rabbit
<b>Purification:</b>	Affinity purification
<b>Observed MW:</b>	44kDa
<b>Calculated MW:</b>	44kDa

## Preparation & Storage

**Storage:** Store at -20°C. Avoid freeze / thaw cycles. Buffer: PBS containing 50% glycerol, preserved with proclin300 or sodium azide (as specified on the Certificate of Analysis), pH 7.3.

Store Bradford Reagent at Room Temperature for 1 Year.

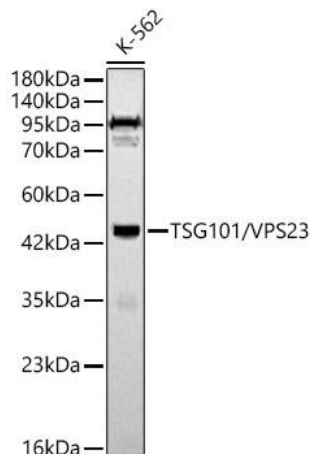
**Positive Sample:** SH-SY5Y, K-562

**Recommended Dilutions:**

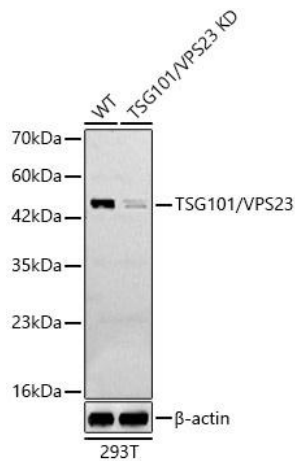
<b>WB</b>	1:500 - 1:1000
<b>IF/ICC</b>	1:50-1:200
<b>ELISA</b>	Recommended starting concentration is 1 µg/mL. Please optimize the concentration based on your specific assay requirements.

**Protein Quantification (Optional):** To quantify total protein levels, use the Bradford Reagent included in this kit. Visit <https://www.assaygenie.com/bradford-protein-assay-protocol/> to view the full protocol

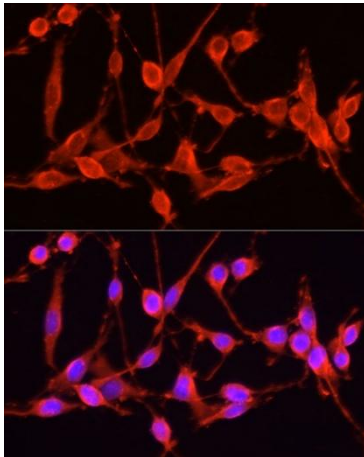
## Validation Data



Western blot analysis of lysates from K-562 cells, using / Rabbit pAb (CAB2216) at 1:800 dilution. Secondary antibody: HRP-conjugated Goat anti-Rabbit IgG (H+L) (CABS014) at 1:10000 dilution. Lysates/proteins: 25µg per lane. Blocking buffer: 3% nonfat dry milk in TBST. Detection: ECL Basic Kit (AbGn00020). Exposure time: 30s.



Western blot analysis of lysates from wild type (WT) and / knockdown (KD) SH-SY5Y(KD) cells, using / Rabbit pAb (CAB2216) at 1:800 dilution. Secondary antibody: HRP-conjugated Goat anti-Rabbit IgG (H+L) (CABS014) at 1:10000 dilution. Lysates/proteins: 25ug per lane. Blocking buffer: 3% nonfat dry milk in TBST. Detection: ECL Basic Kit (AbGn00020). Exposure time: 30s.



Immunofluorescence analysis of PC-12 cells using / Rabbit pAb (CAB2216) at dilution of 1:100 (40x lens). Secondary antibody: Cy3-conjugated Goat anti-Rabbit IgG (H+L) (CABS007) at 1:500 dilution. Blue: DAPI for nuclear staining.