

Pepsinogen II (PG II) Monoclonal Antibody

CAB22281

Description

This Pepsinogen II (PG II) Monoclonal Antibody is supplied as a kit for advanced applications. The kit includes Bradford Reagent to quantify total protein concentration for accurate sample normalization (Optional).

Product Information

SKU:	CAB22281
Contents:	20 μ L, 100 μ L Bradford Reagent: 1 vial (2ml)
Category:	Monoclonal Antibody
Synonyms:	PEPC, PGII, Pepsinogen II (PG II)
Clone:	ARC57719
Applications:	IHC-P ELISA
Conjugation:	Unconjugated
Reactivity:	Human, Mouse

Antibody Data

Gene ID:	5225
Uniprot:	-
Host Species:	Rabbit
Purification:	Affinity purification
Observed MW:	Refer to figures
Calculated MW:	42kDa

Preparation & Storage

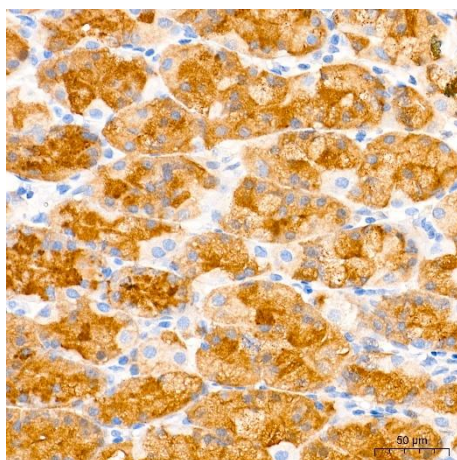
Storage: Store at -20°C. Avoid freeze / thaw cycles. Buffer: PBS containing 50% glycerol and 0.05% BSA, preserved with proclin300 or sodium azide (as specified on the Certificate of Analysis), pH 7.3.
Store Bradford Reagent at Room Temperature for 1 Year.

Positive Sample: -

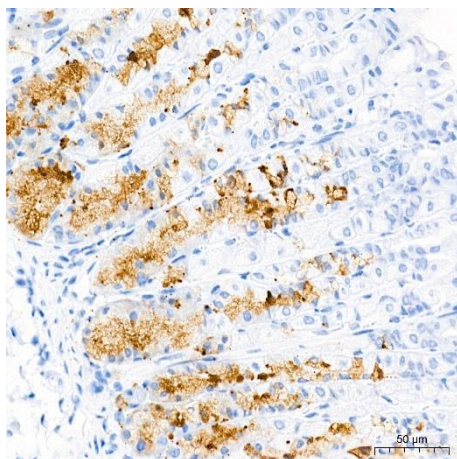
Recommended Dilutions:	IHC-P	1:5000 - 1:20000
	ELISA	Recommended starting concentration is 1 µg/mL. Please optimize the concentration based on your specific assay requirements.

Protein Quantification (Optional): To quantify total protein levels, use the Bradford Reagent included in this kit. Visit <https://www.assaygenie.com/bradford-protein-assay-protocol/> to view the full protocol

Validation Data



Immunohistochemistry analysis of paraffin-embedded Human stomach tissue using Pepsinogen II (PG II) Rabbit mAb (CAB22281) at a dilution of 1:10000 (40x lens). High pressure antigen retrieval performed with 0.01M Tris-EDTA Buffer (pH 9.0) prior to IHC staining.



Immunohistochemistry analysis of paraffin-embedded Mouse stomach tissue using Pepsinogen II (PG II) Rabbit mAb (CAB22281) at a dilution of 1:10000 (40x lens). High pressure antigen retrieval performed with 0.01M Tris-EDTA Buffer (pH 9.0) prior to IHC staining.

