

FITC/5-FAM/6-FAM Monoclonal Antibody

CAB22444

Description

This FITC/5-FAM/6-FAM Monoclonal Antibody is supplied as a kit for advanced applications. The kit includes Bradford Reagent to quantify total protein concentration for accurate sample normalization (Optional).

Product Information

SKU:	CAB22444
Contents:	20 μ L, 100 μ L Bradford Reagent: 1 vial (2ml)
Category:	Monoclonal Antibody
Synonyms:	-
Clone:	ARC51073
Applications:	WB ELISA
Conjugation:	Unconjugated
Reactivity:	Species independent

Antibody Data

Gene ID:	-
Uniprot:	-
Host Species:	Rabbit
Purification:	Affinity purification
Observed MW:	25kDa/55kDa
Calculated MW:	-

Preparation & Storage

Storage: Store at -20°C. Avoid freeze / thaw cycles. Buffer: PBS containing 50% glycerol and 0.05% BSA, preserved with proclin300 or sodium azide (as specified on the Certificate of Analysis), pH 7.3.

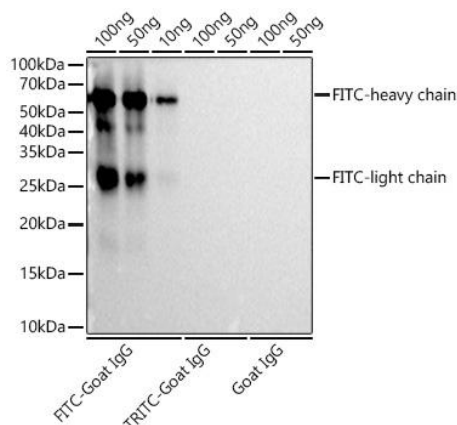
Store Bradford Reagent at Room Temperature for 1 Year.

Positive Sample: -

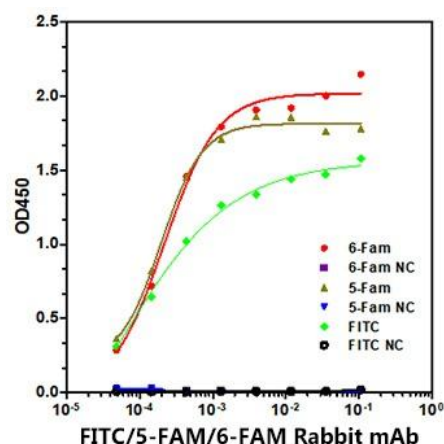
Recommended Dilutions:	WB	1:2000 - 1:4800
	ELISA	1:500 - 1:2000

Protein Quantification (Optional): To quantify total protein levels, use the Bradford Reagent included in this kit. Visit <https://www.assaygenie.com/bradford-protein-assay-protocol/> to view the full protocol

Validation Data



The FITC rabbit monoclonal antibody (CAB22444) are tested in Western blot against FITC Goat IgG (CABS001), TRITC Goat IgG (CABS026) and Goat IgG (CABS071) at 1:4000 dilution. Secondary antibody: HRP-conjugated Goat anti-Rabbit IgG (H+L) (CABS014) at 1:10000 dilution. Lysates/proteins: 25µg per lane. Blocking buffer: 3% nonfat dry milk in TBST. Detection: ECL Basic Kit (AbGn00020). Exposure time: 10s.



Immobilized biotin-6 Fam, biotin-5 Fam, biotin-FITC, at 1 µg/mL (25 µL/well), of which ranges are 0.18-0.40 ng/mL, 0.19-0.29 ng/mL and 0.15-0.29 ng/mL, can bind anti 6-Fam/ 5-Fam/ FITC mAb (CAB22444), respectively.