

## Prolyl hydroxylase PHD1 (EGLN2) Antibody

CAB2252

### Description

---

This Prolyl hydroxylase PHD1 (EGLN2) Antibody is supplied as a kit for advanced applications. The kit includes Bradford Reagent to quantify total protein concentration for accurate sample normalization (Optional).

### Product Information

---

<b>SKU:</b>	CAB2252
<b>Contents:</b>	20 µL, 100 µL Bradford Reagent: 1 vial (2ml)
<b>Category:</b>	Polyclonal Antibody
<b>Synonyms:</b>	EIT6, PHD1, EIT-6, HPH-1, HPH-3, HIFPH1, HIF-PH1, Prolyl hydroxylase PHD1 (EGLN2)
<b>Clone:</b>	-
<b>Applications:</b>	<span>WB</span> <span>IP</span> <span>ELISA</span>
<b>Conjugation:</b>	Unconjugated
<b>Reactivity:</b>	Human, Mouse, Rat

### Antibody Data

---

<b>Gene ID:</b>	112398
<b>Uniprot:</b>	AB_2764253
<b>Host Species:</b>	Rabbit
<b>Purification:</b>	Affinity purification
<b>Observed MW:</b>	43kDa
<b>Calculated MW:</b>	44kDa

## Preparation & Storage

**Storage:** Store at -20°C. Avoid freeze / thaw cycles. Buffer: PBS containing 50% glycerol, preserved with proclin300 or sodium azide (as specified on the Certificate of Analysis), pH 7.3.

Store Bradford Reagent at Room Temperature for 1 Year.

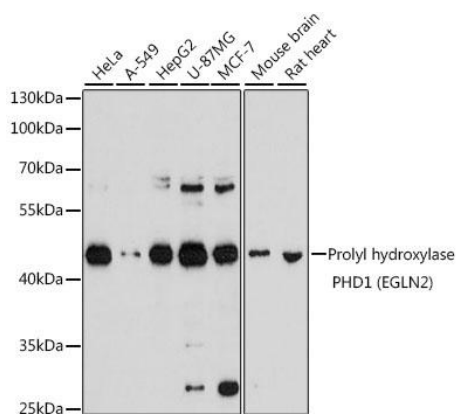
**Positive Sample:** HeLa, A-549, HepG2, U-87MG, MCF-7, Mouse brain, Rat heart

**Recommended Dilutions:**

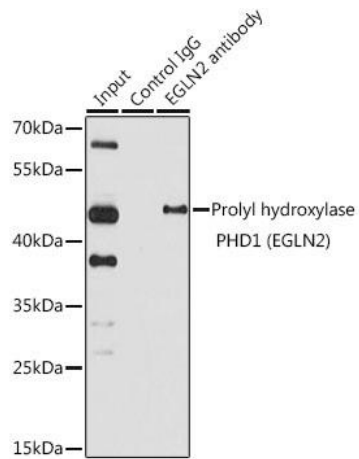
<b>WB</b>	1:500 - 1:2000
<b>IP</b>	0.5µg-4µg antibody for 200µg-400µg extracts of whole cells
<b>ELISA</b>	Recommended starting concentration is 1 µg/mL. Please optimize the concentration based on your specific assay requirements.

**Protein Quantification (Optional):** To quantify total protein levels, use the Bradford Reagent included in this kit. Visit <https://www.assaygenie.com/bradford-protein-assay-protocol/> to view the full protocol

## Validation Data



Western blot analysis of various lysates using Prolyl hydroxylase (EGLN2) Rabbit pAb (CAB2252) at 1:1000 dilution. Secondary antibody: HRP-conjugated Goat anti-Rabbit IgG (H+L) (CABS014) at 1:10000 dilution. Lysates/proteins: 25µg per lane. Blocking buffer: 3% nonfat dry milk in TBST. Detection: ECL Basic Kit (AbGn00020). Exposure time: 30s.



Immunoprecipitation analysis of 150  $\mu$ g extracts of HeLa cells using 3  $\mu$ g Prolyl hydroxylase (Prolyl hydroxylase (EGLN2)) antibody (CAB2252). Western blot was performed from the immunoprecipitate using Prolyl hydroxylase (Prolyl hydroxylase (EGLN2)) antibody (CAB2252) at a dilution of 1:1000.