

HCoV-229E Spike S1 Monoclonal Antibody

CAB22605

Description

This HCoV-229E Spike S1 Monoclonal Antibody is supplied as a kit for advanced applications. The kit includes Bradford Reagent to quantify total protein concentration for accurate sample normalization (Optional).

Product Information

SKU:	CAB22605
Contents:	20 μ L, 100 μ L Bradford Reagent: 1 vial (2ml)
Category:	Monoclonal Antibody
Synonyms:	-
Clone:	ARC57845
Applications:	WB ELISA
Conjugation:	Unconjugated
Reactivity:	HCoV-229E

Antibody Data

Gene ID:	918758
Uniprot:	-
Host Species:	Rabbit
Purification:	Affinity purification
Observed MW:	160kDa (Recombinant Protein)
Calculated MW:	129kDa

Preparation & Storage

Storage: Store at -20°C. Avoid freeze / thaw cycles. Buffer: PBS containing 50% glycerol and 0.05% BSA, preserved with proclin300 or sodium azide (as specified on the Certificate of Analysis), pH 7.3.

Store Bradford Reagent at Room Temperature for 1 Year.

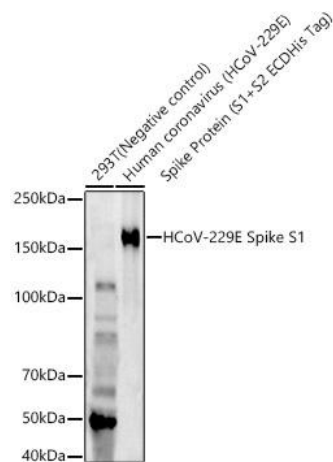
Positive Sample: Recombinant Human coronavirus (HCoV-229E) Spike Protein (S1+S2 ECDHis Tag)

Recommended Dilutions:

WB	1:500 - 1:1000
ELISA	Recommended starting concentration is 1 µg/mL. Please optimize the concentration based on your specific assay requirements.

Protein Quantification (Optional): To quantify total protein levels, use the Bradford Reagent included in this kit. Visit <https://www.assaygenie.com/bradford-protein-assay-protocol/> to view the full protocol

Validation Data



Western blot analysis of various lysates, using HCoV-229E Spike Rabbit mAb (CAB22605) at 1:800 dilution. Secondary antibody: HRP-conjugated Goat anti-Rabbit IgG (H+L) (CABS014) at 1:10000 dilution. Lysates/proteins: 25µg per lane. Blocking buffer: 3% nonfat dry milk in TBST. Detection: ECL Enhanced Kit (AbGn00021). Negative control (NC): 293T. Exposure time: 180s.