

alpha-Actin-1 (ATCA1) Monoclonal Antibody

CAB2280

Description

This alpha-Actin-1 (ATCA1) Monoclonal Antibody is supplied as a kit for advanced applications. The kit includes Bradford Reagent to quantify total protein concentration for accurate sample normalization (Optional).

Product Information

| | |
|----------------------|---|
| SKU: | CAB2280 |
| Contents: | 20 μ L, 100 μ L Bradford Reagent: 1 vial (2ml) |
| Category: | Monoclonal Antibody |
| Synonyms: | ACTA, ASMA, CFTD, MPFD, NEM1, NEM2, NEM3, SHPM, CFTD1, CFTDM, CMYP2A, CMYP2B, CMYP2C, α -Actin-1 (ACTA1) |
| Clone: | ARC1914 |
| Applications: | WB ELISA IF-P |
| Conjugation: | Unconjugated |
| Reactivity: | Human, Mouse, Rat |

Antibody Data

| | |
|-----------------------|-----------------------|
| Gene ID: | 58 |
| Uniprot: | AB_2862988 |
| Host Species: | Rabbit |
| Purification: | Affinity purification |
| Observed MW: | 42kDa |
| Calculated MW: | 42kDa |

Preparation & Storage

Storage: Store at -20°C. Avoid freeze / thaw cycles. Buffer: PBS containing 50% glycerol and 0.05% BSA, preserved with proclin300 or sodium azide (as specified on the Certificate of Analysis), pH 7.3.

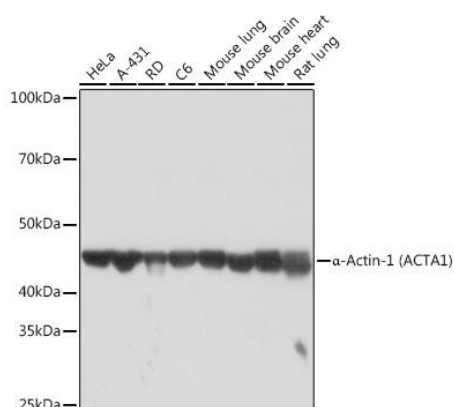
Store Bradford Reagent at Room Temperature for 1 Year.

Positive Sample: HeLa, A-431, RD, C6, Mouse lung, Mouse brain, Mouse heart, Rat lung

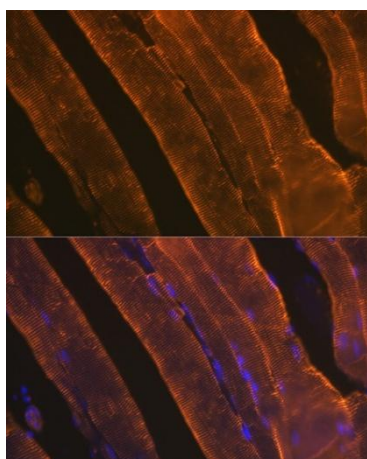
| | | |
|-------------------------------|--------------|--|
| Recommended Dilutions: | WB | 1:1000 - 1:5000 |
| | IF-P | 1:50 - 1:200 |
| | ELISA | Recommended starting concentration is 1 µg/mL. |

Protein Quantification (Optional): To quantify total protein levels, use the Bradford Reagent included in this kit. Visit <https://www.assaygenie.com/bradford-protein-assay-protocol/> to view the full protocol

Validation Data



Western blot analysis of various lysates using α-Actin-1 (ACTA1) Rabbit mAb (CAB2280) at 1:1000 dilution. Secondary antibody: HRP-conjugated Goat anti-Rabbit IgG (H+L) (CABS014) at 1:10000 dilution. Lysates/proteins: 25µg per lane. Blocking buffer: 3% nonfat dry milk in TBST. Detection: ECL Basic Kit (AbGn00020). Exposure time: 10s.



Immunofluorescence analysis of paraffin-embedded rat skeletal muscle using α-Actin-1 (ACTA1) Rabbit mAb (CAB2280) at dilution of 1:100 (40x lens). Secondary antibody: Cy3-conjugated Goat anti-Rabbit IgG (H+L) (CABS007) at 1:500 dilution. Blue: DAPI for nuclear staining.